

ACTS & FACTS

INSTITUTE FOR
CREATION RESEARCH

www.icr.org

OCTOBER 2016

VOL. 45 NO. 10



**Behind the Scenes of
*UNCOVERING THE TRUTH
ABOUT DINOSAURS***
page 5

**Subatomic Particles
Part 4: Gauge Bosons**
page 10

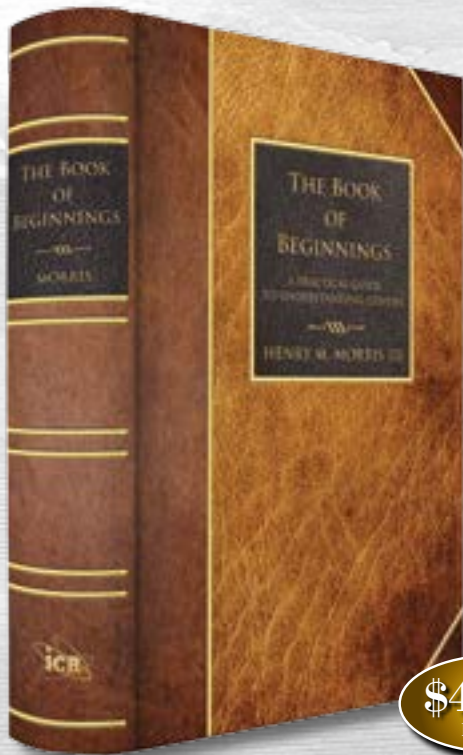
**Evolutionists Can't
See Eye Design**
page 16

**So Many Skin Tones
from Adam and Eve?**
page 19

THE BOOK OF BEGINNINGS

A PRACTICAL GUIDE TO UNDERSTANDING GENESIS

DR. HENRY M. MORRIS III



- New Expanded Hardcover Edition — a Classic Keepsake!
- Extensive Subject & Scripture Indexes

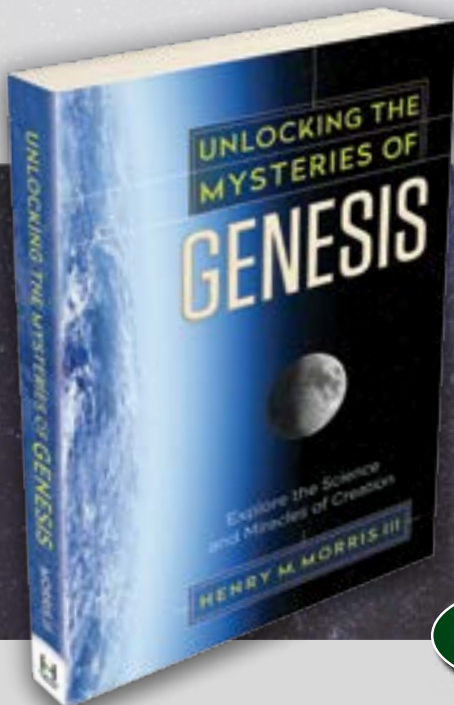


In this new comprehensive edition of *The Book of Beginnings*, Dr. Henry M. Morris III addresses the difficult issues in Genesis. These in-depth answers will give you confidence in Scripture and help you communicate the richness of Genesis.

\$49.99
BTBOB

UNLOCKING THE MYSTERIES OF GENESIS

DR. HENRY M. MORRIS III



Based on ICR's DVD series with the same title, this new book is a great companion to our *Unlocking the Mysteries of Genesis* DVD series or as a stand-alone study!

How does the creation story of Genesis fit with the evolutionary theories of popular science? Many Christians wrestle with the seeming disparity between faith and science. *Unlocking the Mysteries of Genesis* seeks to resolve this conflict by answering key questions about the origin of human life, the evidence of the fossil record, and how science lines up with the Bible.

Using the most current research, this *Unlocking the Mysteries of Genesis* book explores God's creation through the lens of faith-based science. The compelling evidence will challenge your intellect and reinforce your faith.

\$15.99
BUTMOG

Published by
INSTITUTE FOR CREATION RESEARCH
P. O. Box 59029
Dallas, TX 75229
214.615.8300
www.icr.org

EXECUTIVE EDITOR
Jayme Durant

SENIOR EDITOR
Beth Mull

EDITORS
Michael Stamp
Truett Billups
Christy Hardy

DESIGNER
Dennis Davidson

No articles may be reprinted in whole or in part without obtaining permission from ICR.

Copyright © 2016
Institute for Creation Research



CONTENTS



5



9



15



19

5 Behind the Scenes of *Uncovering the Truth about Dinosaurs*

JAYME DURANT

RESEARCH

9 Internal Telomere-like Sequences Are Abundant and Functional

JEFFREY P. TOMKINS, PH.D.

IMPACT

10 Subatomic Particles, Part 4: Gauge Bosons

JASON LISLE, PH.D., AND VERNON R. CUPPS, PH.D.

BACK TO GENESIS

14 Genesis Compromise Unravels the Bible

JAKE HEBERT, PH.D.

15 Mesozoic Seafood Menu Caters to Noah's Flood

BRIAN THOMAS, M.S.

16 Evolutionists Can't See Eye Design

RANDY J. GULIUZZA, P.E., M.D.

CREATION Q & A

19 So Many Skin Tones from Adam and Eve?

BRIAN THOMAS, M.S.

APOLOGETICS

20 SOBA Graduate Interview: Pastor Richard Corwin

JAMES J. S. JOHNSON, J.D., TH.D.

21 Creation Research Society Conference 2016

FRANK SHERWIN, M.A.

STEWARDSHIP

22 Showcasing the Evidence

HENRY M. MORRIS IV



Dinosaur Mysteries Uncovered

When did dinosaurs live? Did they walk the earth at the same time as humans? What happened to them? How did they fit on the Ark? Don't dinosaurs prove evolution? You've no doubt heard these questions. Their answers have been long hidden, buried in rocks and fossils and smothered by evolutionary ideas.

Evolutionists tell us dinosaurs lived millions of years ago. But scientists at the Institute for Creation Research and other creation organizations have uncovered evidence that tells a different story. Dinosaur fossils hold secrets, and God's Word reveals their true history.

For too many years, we've let evolutionists mislead our culture about these mysterious creatures. Evolutionists proclaim a different message from the biblical account of creation, and our children have struggled with the confusion far too long. The stories evolutionists tell in schools, museums, and films cause our children to doubt that God provides answers in every area of life—even dinosaurs.

How can we give our children confidence in what the Bible teaches? Let's start with a few fast facts.

- 1) Dinosaurs were created on Day 6 of creation week, along with the other land animals and humans.
- 2) Dinosaurs walked on Earth at the same time as humans, though perhaps not often in the same places.
- 3) The Bible mentions a beast called behemoth that matches a kind of dinosaur. Leviathan, too, appears to have been a huge dinosaur-like creature that may be the source of dragon stories through the years.

- 4) Legends and historical accounts from around the world include dinosaur-like creatures as dragons—indications that humans actually witnessed real dinosaurs alive after the Flood.
- 5) The 60 or so basic kinds of dinosaurs could easily fit on the Ark.
- 6) Scientific research on soft tissues (skin, blood, and other tissue) discovered in dinosaur fossils confirms that dinosaurs lived thousands, not millions, of years ago.
- 7) Noah's worldwide Flood formed dinosaur fossils found on every continent, including Antarctica.

We've worked on our latest DVD series, *Uncovering the Truth about Dinosaurs*, for almost a year—and it's available for pre-order now (see page seven). We went to a dinosaur fossil dig site in remote Wyoming. We filmed at Caddo Lake in Texas, an environment that our scientists believe dinosaur habitats may have been like before the Flood. We also spent time at a San Antonio historic mission, discussing the legends of dinosaurs and dragons with experts from across the country. Our team also filmed at a paleontology lab, where scientists examine and research the remains of dinosaurs from a recent past. This series goes into detail on what scientists are discovering today.

We've uncovered the answers—the truth about dinosaurs. Don't let evolution undermine your child's faith. Learn how our Creator's work is displayed in these amazing creatures, and share the truth with confidence the next time you hear the question, "But what about dinosaurs?"

Jayme Durant

Jayme Durant
EXECUTIVE EDITOR



Top to bottom:

- Digging fossils at the Lance Formation, Wyoming
- Shooting at the East Texas Arboretum and Botanical Society in Athens, Texas
- Dr. Kurt Wise in the paleontology lab
- Dr. James Johnson and Dr. Jake Hebert at the San Antonio mission

Image credits: J. Durant



Behind the Scenes of *UNCOVERING THE TRUTH ABOUT DINOSAURS*

In 2014, ICR produced *Unlocking the Mysteries of Genesis*. The following year, we produced *Made in His Image*. This year, our scientists and host Markus Lloyd are back for a new DVD series—*Uncovering the Truth about Dinosaurs*.

While scripts were in the process of drafting, review, and approval, we discussed the unique challenges of this project. One of the biggest is that dinosaurs are extinct—they aren't grazing in some swamp or field outside Dallas waiting to be filmed. Animation was extremely important to this project, and our film production team did a great job creating convincing, lifelike dinosaurs.

We filmed at a dinosaur animatronic manufacturing warehouse, a college paleontology lab, a San Antonio historic mission, the only natural lake in Texas, an East Texas botanical garden, a Christian

university library, and a remote Wyoming dinosaur fossil dig site.

While each project has its own challenges, they all have their signature memories. A few things stood out to me as we spent a year uncovering the truth about dinosaurs.

Evolution's Stronghold

Many of the people we encountered as we traveled and filmed cling to evolution's story. From the makers of giant dinosaur models to students at Christian universities, most people assume dinosaurs

Image credit: J. Durant



Film crew in Armstrong Browning Library, Baylor University, Waco, Texas



Rock formation near the Lance Formation, Wyoming



Stegosaurus DVD animation

lived millions of years ago, long before humans walked on Earth. Park rangers present their spiels with such authority, and postcards and historical site markers seem to confirm evolution's tale to park visitors with such certainty, as to leave little doubt millions of years is a proven fact. Even many believers we spent time with have a hard time figuring out how dinosaurs fit with the biblical record.

Fascination with Dinosaurs

Fascination with dinosaurs is universal, and many of those we worked with asked questions as they began to see the scenes unfold. Hotel workers, boat guides, venue owners, librarians, park managers—they all had questions. What about the science (as if the evolution of amphibians to dinosaurs is scientific)? What about the fossil record? But dinosaurs lived in a different age from humans, right? How did dinosaurs go extinct? How could a flood cover the whole earth? How could huge dinosaurs fit on the Ark? How could so many people be wrong?

Everyone, everywhere, displayed fascination with these mysterious creatures, but many were still in the dark when it came to the truth about dinosaurs. They embrace the evolutionary ideas that pervade our culture. Little of the general public's understanding rests on science—it's based on the imaginations of creative filmmakers, museum placards, and evolutionary textbooks and teachers. Confusion dominates the topic of dinosaurs.

God Uses People's Curiosity to Draw Them to Him

When a film crew breaks out the cameras, people show up. Curiosity causes them to pause and investigate. How can we use that curiosity to pull people into the truth of God's Word? How do we create an opportunity for people to pause and wonder about the Creator? How can we use that natural inquisitive nature of humans to lead them to understanding? We hope this series will encourage our viewers to seek answers and to experience the thrill of discovery.



Shooting at Caddo Lake, Texas

Laughter Behind the Scenes

As always, the production team laughed along the way. Unusual things happen when you film, particularly when you travel with a film crew. How is it that South Dakota had record-breaking 100-degree temperatures when we arrived there to travel to the fossil dig site, while it was only 72 degrees in Texas? Have you ever had to count cattle guards to follow directions to a location? Sixteen, to be exact. What happens when you lose count? I'm so glad Markus stayed on top of that task! We were miles from civilization on an 8,000-acre Wyoming ranch about to call "Action"—when a road grader showed up and began to repair the gravel road.



Sign in Wyoming hotel

We discovered that filming on a dirt road turns a black Jeep almost white—inside and out. We also learned how to mildly rough it. When there's no time for a shower before dinner, the next best option is to use a blow-dryer to blow the dust out of your hair and clothes. We stayed in a hotel with a sign that read, "Please use these rags instead of using the towels in the rooms for wiping guns, motorcycles, boots, ect." Yes, spelled e-c-t.

We witnessed dozens of antelope grazing in Wyoming fields—but somehow we avoided snakes and alligators while standing along the water's edge in East Texas. The local sheriffs of a small East Texas town decided to bring their jail inmates to the botanic gardens to pull weeds on the day we filmed about the wonders of God's creation. Coincidence? Or did those inmates need to hear about the behemoth that day? I wondered about the history of the town we stayed in—Uncertain, Texas—and how it was named. We

all had a laugh when we passed the sign pointing us to a local church. You guessed it, the Church of Uncertain!

God's Majesty in Creation Inspires Wonder

And we shared moments that left us in awe. A lone cypress in the middle of a lake drew our thoughts to God's Word. Raindrops appeared when we stood at the edge of a Texas lake filming about the Flood of Noah's day, with perfect little ripples forming on the surface. Black clouds and flashes of lightning engulfed the Wyoming sky just as we wrapped up shots that speak of God's majesty. No artist could have produced the backdrops that God provided as we filmed *Uncovering the Truth about Dinosaurs*. 🦖

Editor's note: We strive to produce DVDs, books, magazines, and news stories that showcase our Creator's world. We pray that *Uncovering the Truth about Dinosaurs* will help you, your family, and your friends gain a better understanding of how science confirms Scripture. This series will be available in November. Order your copy today!

Jayne Durant is Director of Communications at the Institute for Creation Research.



Church sign near the town of Uncertain, Texas; population 94

Pre-order yours today!
Call 800.628.7640 or visit ICR.org/store
(Available in November)



Tyrannosaurus rex DVD animation

Image credits: J. Durant. Animation by Alchemy at AMS.

OCTOBER 2	Hemet, CA West Valley Bible Church (J. Hebert) 951.766.8445	OCTOBER 7-9	Oceanside, CA — Back to Genesis Conference at Calvary Chapel Oceanside (H. Morris III, J. Lisle, J. Hebert) 760.754.1234
OCTOBER 2	Rialto, CA Calvary Chapel Rialto (J. Lisle) 909.820.7300	OCTOBER 8-9	Vista, CA Calvary Vista (J. Lisle) 760.726.4224
OCTOBER 2	Santa Clarita, CA Grace Baptist Church (J. Lisle) 661.296.8737	OCTOBER 9	Cardiff, CA Calvary Chapel Encinitas (J. Hebert) 760.487.8098
OCTOBER 3	Valencia, CA Grace to You (J. Lisle) 661.295.5777	OCTOBER 16, 23, 30	Irving, TX Back to Genesis Series at MacArthur Blvd. Baptist Church (J. Lisle, J. Hebert, H. Morris III, B. Thomas) 972.373.9833
OCTOBER 5	San Diego, CA Maranatha Chapel (J. Lisle) 858.613.7800	OCTOBER 23	Sherman, TX Grace Bible Church (R. Guliuzza) 903.868.1752
OCTOBER 5	Anaheim, CA Calvary Chapel East Anaheim (J. Hebert) 714.695.9650	OCTOBER 30	Gardena, CA Calvary Chapel South Bay (J. Lisle) 310.352.3333
OCTOBER 7	Randolph, MA Pastors Appreciation Luncheon (R. Guliuzza) 617.328.0880		



INSTITUTE FOR CREATION RESEARCH

OCTOBER 7 - 9, 2016

BACK TO GENESIS

CONFERENCE @ CALVARYOSIDE

Registration is \$10 per person or \$35 per family.

Calvary Chapel Oceanside
3715 Oceanic Way, Oceanside, CA 92056
For information, call (760) 754-1234 or visit calvaryoceanside.org



Henry M. Morris III,
D.Min.



Jason Lisle, Ph.D.



Jake Hebert, Ph.D.

For more information on these events or to schedule an event, please contact the ICR Events Department at **800.337.0375**, visit ICR.org/events, or email us at events@icr.org

Internal Telomere-like Sequences Are Abundant and Functional

The prevailing evolutionist mantra holds that humans and chimpanzees share a common ancestor that lived about six million years ago. One of the most cited evidences for this belief is the alleged human chromosome 2 fusion site. There, evolutionists claim, one can see the degenerate remnants of where two telomeres fused, which they say are leftovers from humans' evolutionary descent.

Telomeres are specialized DNA sequences found at the ends of chromosomes in plants and animals. They are uniquely designed to make possible the existence of more-complicated forms of cells that have large linear chromosomes—contrasted with single-cell bacteria that have less-complex circular chromosomes.

Scientists were intrigued when the sequencing of the human genome revealed that sections of telomere sequences also exist throughout the internal regions of chromosomes instead of exclusively at the ends.¹ At first, it was believed that *interstitial telomere sequences* (ITSs) were genetic mistakes and served no useful purpose. The famous head-to-head ITS on human chromosome 2 was initially attributed to an accidental fusion of two ancestral ape-like chromosomes. However, this speculation was disproven. It's now known this particular ITS is in the middle of a highly expressed gene—functionally acting as a second genetic switch called a *promoter*.^{2,3} Telomeres are completely void of genes,

so it would be impossible for a telomere fusion to provide the proper DNA sequences to produce a functional gene.

Some scientists also thought that ITSs might actually be dangerous to the genome, and researchers tried to associate them with disease, cancer, and chromosome breakage.¹ However, more research showed that these anomalies were primarily associated with other sequences that were physically close to the ITSs and had nothing to do with their presence.¹

Amazingly, ITSs show strong evidence of design rather than evolutionary accidents. The presence of ITSs within internal regions of chromosomes affects gene expression by changing the conformational (three-dimensional) properties of the DNA.⁴ As is typical of the evolutionary mindset, scientists presupposed that ITSs were freak accidents of nature and disruptive to the genome rather than looking for purpose and function. Despite this counterproductive approach, they eventually concluded that ITSs have a distinct function within the genome.

Elsewhere, I showed how the ITS at the alleged human chromosome 2 fusion site was clearly a functional element involved with gene expression.^{2,3} So, is it possible that other ITS regions across the genome are also

important gene-regulating features? As a result of this question,

I have written software that has identified ITS regions throughout the human genome and then intersected their genomic locations with a wide variety of publically available data sets from the ENCODE (Encyclopedia Of Dna Elements) project. The ENCODE project provides a diverse array of functional DNA sequence data across the genome and is ideal for determining the function of a particular DNA sequence. My preliminary data indicate that many ITS regions all over the human genome are directly involved with gene expression, including the binding of specialized genetic switch proteins called *transcription factors*.

This type of research shows that the gene expression properties discovered for the ITS at the alleged human chromosome 2 fusion site are not unique to that location. Instead of pointing to a common ancestor with chimps, the ITS represents a common functional design feature placed in our genome by an all-wise and omnipotent Creator. ☞

References

1. Lin, K. W. and J. Wan. 2008. Endings in the middle: current knowledge of interstitial telomeric sequences. *Mutation Research*. 658 (1-2): 95-110.
2. Tomkins, J. P. 2013. Alleged Human Chromosome 2 "Fusion Site" Encodes an Active DNA Binding Domain Inside a Complex and Highly Expressed Gene—Negating Fusion. *Answers Research Journal*. 6: 367-375.
3. Tomkins, J. P. 2015. More DNA Evidence Against Human Chromosome Fusion. *Acts & Facts*. 44 (8): 10-12.
4. Revaud, D. et al. 2009. Sequence-driven telomeric chromatin structure. *Cell Cycle*. 8 (7): 1099-1100.

Dr. Tomkins is Director of Life Sciences at the Institute for Creation Research and earned his Ph.D. in genetics from Clemson University.





SUBATOMIC PARTICLES, PART 4:

GAUGE BOSONS, THE GLUE THAT HOLDS THE UNIVERSE TOGETHER

J A S O N L I S L E , P H . D . , A N D V E R N O N R . C U P P S , P H . D .

Have you ever wondered how a magnet “knows” to stick to a refrigerator? If you hold a magnet sufficiently close, it will actually jump out of your hand and

attach itself to the metal surface. But how does it know that it is close to a refrigerator or which way to jump? It is not as if the magnet has eyes to see which direction to go. Somehow, it can sense the metal even

though there is some distance between the two. How is this action at a distance possible? Physicists believe the answer involves subatomic particles called *gauge bosons*.

In the previous articles of this series,

Particle	photon	W^-	W^+	Z^0
Spin	1	1	1	1
Charge	0	-1	+1	0
Color Charge	none	none	none	none
Mass (GeV/c ²)	0	80.39	80.39	91.19
Half-life (s)	∞	3×10^{-25}	3×10^{-25}	3×10^{-25}
Mediates Force	Electromagnetic	Weak Nuclear Force		

Particle	gluon	Higgs
Spin	1	0
Charge	0	0
Color Charge	1 of rgb & 1 of $\bar{r}\bar{g}\bar{b}$	none
Mass (GeV/c ²)	0	125
Half-life (s)	∞	1.08×10^{-22}
Mediates Force	Strong Nuclear	

Figure 1. The six elementary bosons of the Standard Model.

we reviewed 12 of the 18 known elementary particles—nothing smaller exists.¹ These are the six leptons and six quarks. Five of the remaining six elementary particles are gauge bosons (see Figure 1).

Most physicists believe that leptons and quarks interact by producing and absorbing gauge bosons and that this is how particles are able to project a force over a distance. Think of gauge bosons as subatomic messengers. They communicate information about the four fundamental forces between particles (gravity, electromagnetism, weak nuclear force, and strong nuclear force). Therefore, each type of force is associated with one or more gauge bosons. Let's start by examining the electromagnetic force and its gauge boson, the photon.

Photons

The electromagnetic force is responsible for keeping a magnet stuck to a metal refrigerator. It also keeps electrons bound in orbitals around the nucleus of an atom. So, without the electromagnetic force, matter could not exist. The photon (γ) is a particle of light and is also the messenger particle of the electromagnetic force. So, the particle that allows our eyes to see the world is the same particle that holds matter together.²

Most physicists believe that the pro-

.....

The photon is a particle of light and is the messenger particle of the electromagnetic force. So, the particle that allows our eyes to see the world is the same particle that holds matter together.

.....

cess works essentially as follows. A charged particle emits a low-energy photon toward another charged particle with the message “come a bit closer” or “move farther away from here” depending on the relative charges. When the other particle receives the photon, it responds by moving closer or moving away. Charged particles therefore “know” the location of other charged particles due to the exchange of virtual photons that tell them how to move. The term “virtual” means that we cannot directly observe the photon exchange; it is inferred based on our

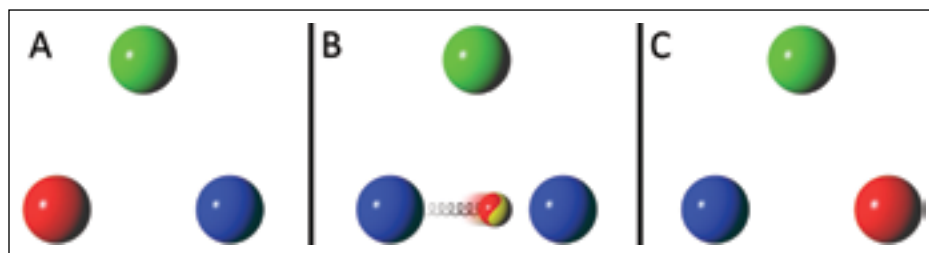


Figure 2. Gluon exchange between quarks within a baryon.

observations of how particles move. But the model does make correct predictions.

The photon itself is a massless, uncharged boson with spin 1. Recall that bosons are integer-spin particles that do not obey the Pauli Exclusion Principle. Photons are stable and are their own antiparticle.

Gluons

Just as photons are the messengers of the electromagnetic force, so *gluons* (g) are the messengers of the strong nuclear force. Recall that the strong force has six types of charge, which we call red, green, blue, anti-red, antigreen, and antiblue. (These terms are unrelated to literal color.) Since there are six charges rather than two, gluon behavior is a bit more complicated than photon behavior. But the same basic principle applies: a quark will emit a gluon that is absorbed by another quark, telling it how to move. Gluons possess a color charge and simultaneously an anticolor charge (Figure 2).

Here is how it works. Recall that the three quarks of a baryon have color charge. One will be red, one green, and one blue (Figure 2A). The red quark emits a gluon. This gluon has color and anticolor. Let's suppose the gluon is red and antiblue (Figure 2B). Since the baryon's color charge is conserved, the red quark must change to a blue quark, with the gluon carrying away its redness and antiblue to cancel out the blue. This red-antiblue gluon is then absorbed by the blue quark, which turns it red (Figure 2C). The reaction causes the red and blue quarks to attract a bit, but it also swaps their colors. The same kind of process happens between the red and green quarks, and between green and blue quarks; they are con-

stantly swapping colors by gluon exchange. At any given moment, the total color charge of the baryon is always white, because this is the sum of all the quark and gluon colors.

Like photons, gluons are massless, uncharged, spin 1 bosons. But unlike photons, gluons have not been directly observed. However, they do account nicely for the properties of the strong nuclear force. Furthermore, since gluons themselves possess color charge, they can interact with other gluons.³ Since gluons possess any one of three colors and any one of three anticolors, there are actually eight unique color combinations of gluons.⁴ Antigluons are also gluons because reversing all colors simply results in another gluon.

W and Z Bosons

The weak nuclear force is able to change one type of particle into another at short distances. It is responsible for phenomena such as the radioactive decay in unstable atoms. The weak force is mediated by three different bosons: the W^+ , the W^- , and the Z^0 (see Figure 1). All three are spin 1 bosons. Unlike all other gauge bosons, these have mass and are unstable, which limits the range of the weak force.^{5,6} Since the W bosons have electrical charge (+1 or -1), a weak force interaction can change not only the type of particle but also the charge by ± 1 . For example, a down quark can decay into an up quark by emitting a W^- or by absorbing a W^+ . Weak decays that do not alter the charge of the particle involve the Z^0 . The W^- is the antiparticle of the W^+ and vice versa. The Z^0 is its own antiparticle.

The Higgs Boson

The recently discovered Higgs boson is rather unique. It is an elementary boson but not a gauge boson (it does not mediate any of the fundamental forces). Rather, the Higgs boson is associated with the *Higgs field*, an invisible uniform “cloud” that permeates all of space and that is thought to set the

.....

The Higgs boson is associated with the *Higgs field*, an invisible uniform “cloud” that permeates all of space and that is thought to set the mass of all particles. Most physicists believe that particles that strongly “feel” the Higgs field have more mass than those that feel it weakly. Massless particles, like photons and gluons, don’t interact with the Higgs field at all.

.....

mass of all particles. Most physicists believe that particles that strongly “feel” the Higgs field have more mass than those that feel it weakly. Massless particles, like photons and gluons, don’t interact with the Higgs field at all. The Higgs boson has a spin of zero, a charge of zero, and is extremely massive, more than a hundred times heavier than a proton. Some people have referred to the Higgs boson as the *God particle* because it supposedly “rules” over all other particles by setting their mass. However, most physicists do not use this nickname.

Undiscovered Particles

We have seen that the electromagnetic force, the strong force, and the weak force are mediated by gauge bosons. Some readers may be wondering about the gravitational force. Is it also mediated by the exchange of bosons? The gravitational force is not part of the Standard Model of particle physics because it is so much weaker than the other forces that it can be neglected at quantum scales. Nonetheless, most physicists believe that gravity is also mediated by a gauge boson that they call the *graviton*. This undiscovered particle is predicted to have a mass of zero, a charge of zero, and a spin of 2.⁷

Another particle predicted by the Standard Model but undiscovered is the *glueball*, a composite particle made of interacting gluons but with no quarks. Combinations of four or five quarks/antiquarks have been reported but not yet experimentally confirmed.⁸

Some models of physics go beyond the Standard Model and predict, or at least allow, the existence of particles that have not yet been experimentally observed. *Tachyons* are a class of hypothetical particles that move faster than the speed of light.⁹ However, most physicists believe that they do not exist.¹⁰

Supersymmetry models predict the existence of an extremely massive elementary boson “partner” for each type of elementary fermion. Thus, quarks would have boson partners called *squarks*, and electrons would have corresponding *selectrons*. None of these have been observed.

Implications for Creation

Having explored the 18 known elementary particles and their properties, we are struck by the orderly way in which they may be classified (see Figure 3). Why such logical organization? What worldview can make sense of this?

In the biological sciences, living organisms can be classified into a logical hierarchy (order, family, genus, species). Creationists expect this because God is logical and has imposed order on His creation. Despite substantial evidence to the contrary, secularists still tell us that evolution is the way to account for such a hierarchy, that all organisms have similarities because they share a common ancestor, and differences are due to the cumulative effect of tiny changes over billions of years.

However, evolution cannot account for the hierarchy of particles because par-

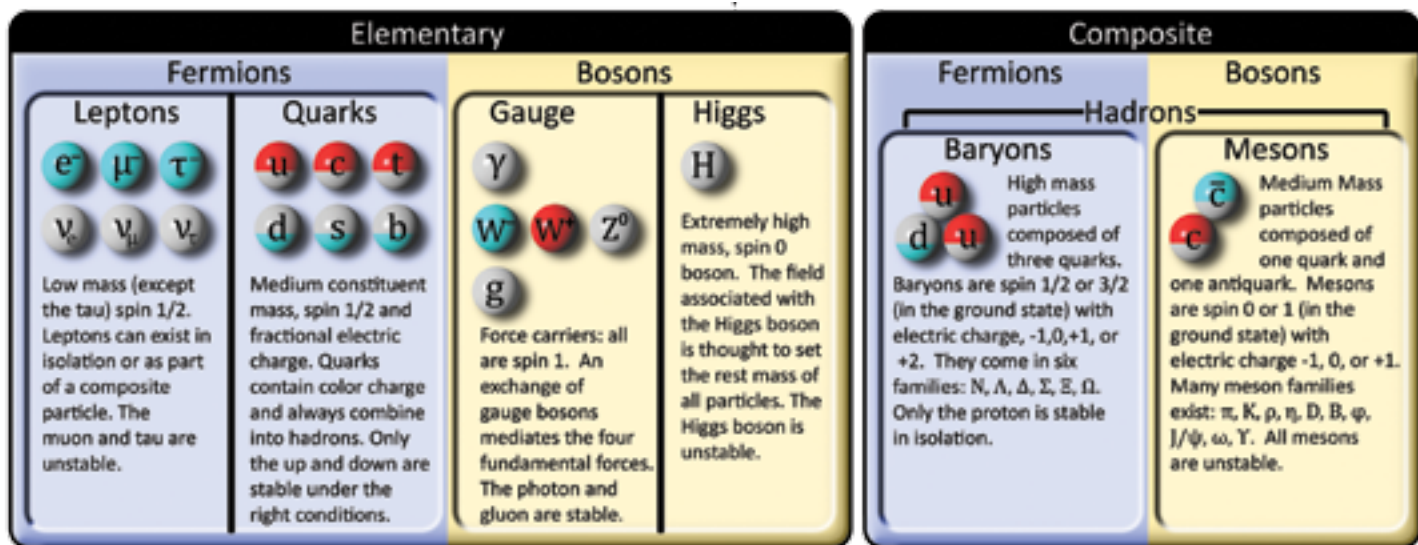


Figure 3. Subatomic particles.

ticles do not gradually evolve. Even when particles decay, the transition is essentially instantaneous and always results in one of the 18 known elementary particles. It is not as though the electron somehow gradually gained mass over millions of years until it became a muon. Elementary particles cannot gradually change, and so we cannot appeal to evolution or any chance process as the explanation for their hierarchical classification. Only if the universe is upheld by the mind of God can we account for such order.

The way in which God controls the universe is so logical and mathematical that we can assign equations to it and even predict the statistical outcome of many particle interactions. We can compute the electromagnetic force accurately over great distances because of God's order. The four fundamental forces are not a replacement for God's power but an example of God's power. They merely describe the ordinary way God upholds creation, and we could not make sense of them apart from biblical revelation.

We have seen the delicate balance between the four forces; each is perfectly designed to make life possible. We have explored the fleeting nature of so many subatomic particles. Yet the ones needed for atomic chemistry and life are stable. The

masses and forces are precisely tuned. If the up quark were just slightly heavier than the down quark, all matter would decay into neutrons. Slightly change the charge of an electron or a quark and atoms could never form larger structures due to electric repulsion. It's clear the universe is perfectly designed for life.

Furthermore, aside from the photon, subatomic particles are not things we can see with our eyes. Most of the gauge bosons cannot be directly observed by any modern apparatus. Gluons—apparently confined within the nucleus of an atom and are far smaller than we can observe. W^\pm and Z^0 bosons decay so quickly that they cannot be directly observed. Rather, we infer the existence of these particles due to the effects they produce on things we can see. Therefore, we have a well-justified faith (evidence of things not seen)¹¹ in these particles and their properties. Similarly, we cannot normally see God with our eyes, but the evidence of His upholding power is displayed throughout the cosmos—from the smallest bosons and quarks to the largest galaxies.¹² ☞

References

- Lisle, J. and V. R. Cupps. 2016. Subatomic Particles, Part 1: Leptons. *Acts & Facts*. 45 (7): 10-13; Lisle, J. and V. R. Cupps. 2016. Subatomic Particles, Part 2: Baryons. *Acts & Facts*. 45 (8): 10-13; Lisle, J. and V. R. Cupps. 2016. Subatomic Particles, Part 3: Mesons. *Acts & Facts*. 45 (9): 10-13.
- Our eyes can only detect photons within a particular energy range, which we refer to as visible light. Radio waves, micro-

waves, infrared radiation, ultraviolet radiation, X-rays, and gamma rays are all made of photons, but these are invisible to the human eye.

- This is not the case for photons. Photons do not attract or repel other photons because they are electrically neutral.
- Six such possibilities would be red-antigreen, red-antiblue, green-antiblue, green-antired, blue-antired, and blue-antigreen. The color-neutral versions (such as red-antired) cannot exist as independent gluons (otherwise there would be nine gluons instead of eight) but can exist in an indeterminate state with another color-neutral variety. There are two unique mathematical states in which this can occur, thereby accounting for the seventh and eighth gluon state.
- Since they have such a short half-life, the W^\pm , W^0 , and Z^0 bosons can only travel a short distance before they decay. Therefore, the weak force has extremely limited range.
- Gluons are massless, yet the strong force has limited range for other reasons beyond the scope of this article.
- Gravitons must be stable because the range of gravitation is infinite. The graviton, if it exists, would be unique since it would be the only known tensor (spin 2) gauge boson.
- The four-particle *tetraquark* would be composed of two quarks and two antiquarks—essentially a combination of two mesons. The five-particle *pentaquark* would be comprised of four quarks and one antiquark—essentially a combination of a baryon and a meson. Both would have a white color charge.
- The mathematics suggests that tachyons would behave in a “backward” fashion; they slow down as energy is added to them and speed up when energy is removed. Tachyons cannot be slowed down to the speed of light because this would take infinite energy, just as “regular” massive particles cannot be accelerated up to the speed of light.
- All known particles are either *luxons* or *bradyons*. Luxons are particles that have no rest mass and move at the speed of light (photons and gluons). Bradyons have rest mass and move slower than the speed of light (everything else).
- Hebrews 11:1.
- Romans 1:20.

Dr. Lisle is Director of Physical Sciences and Dr. Cupps is Research Associate at the Institute for Creation Research. Dr. Lisle earned his Ph.D. in astrophysics from the University of Colorado, and Dr. Cupps earned his Ph.D. in nuclear physics at Indiana University-Bloomington.



Genesis Compromise Unravels the Bible

Christians who accept millions of years of Earth history may be unaware of the inconsistency of their position. On one hand, they profess to believe the Bible, but on the other they fail to accept Genesis 1–2 as written. They might attempt to dismiss the issue by telling themselves it isn’t that serious. After all, can’t one accept the rest of the Bible as written yet reject the doctrine of a recent six-day creation? Unfortunately, accepting an old earth logically undermines the *entire* Bible.

If the world’s sedimentary rocks really are millions of years old, then the fossilized remains of plants and animals within those rocks are *also* millions of years old. These include the fossilized remains of thorny plants. This would imply that thorns were in the world long before the first humans. So, how can thorns be punishment for man’s sin as described in Genesis 3:18? And if the third chapter of Genesis is wrong about thorns, why would we trust the promise of the coming Savior in Genesis 3:15? And why should we believe its claim that death is the penalty for sin (Genesis 3:19)?

Because fossils are the remains of dead animals and plants, accepting deep

time implies that animal death and suffering existed for millions of years before Adam’s sin. Yet God’s description of His original creation as “very good” (Genesis 1:31), the gracious character of God revealed in Scripture (Psalm 145:9), and the fact that God created people and animals originally as vegetarians (Genesis 1:29-30) all imply that the “groaning” now found in nature (Romans 8:20-22) was imposed on it only *after* Adam’s fall, not before.

.....

The Lord Jesus Himself clearly believed in both a recent creation (Mark 10:6, 13:19; Luke 11:50-51) and the historicity of the Genesis Flood (Luke 17:26-27).

.....

Also, these fossils are found in water-deposited rocks all over the world. This would seem to be *prima facie* evidence for the Genesis Flood, but many Christians naively accept the uniformitarian claim that these rock layers formed slowly over millions of years. But if these water-deposited rocks are not from the Flood event, then it would be only logical to conclude that the Flood never really happened in the first place.

But this would imply that the global Flood described in Genesis 6–8 is at best a serious exaggeration of a mere local flood. Yet the apostle Peter affirmed the global na-

ture of the Flood (2 Peter 2:5, 3:6). If Peter was wrong about this, then clearly his writings were not divinely inspired. Yet those same writings testify of the transfiguration and resurrection of Christ (2 Peter 1:16-18; 1 Peter 3:18). So was Peter wrong about those events too?

The millions-of-years view also impugns the testimony of Christ. The Lord Jesus Himself clearly believed in both a recent creation (Mark 10:6, 13:19; Luke 11:50-51) and the historicity of the Genesis Flood (Luke 17:26-27). If He was wrong about such things, then how can He be the Son of God?

The bad news is that compromise with old-earth ideas logically undermines the *entire* Bible. The good news is that there is no good reason to believe in an old earth! The earth is young, the Flood really did occur, and the scientific evidence is consistent with the claims of Scripture. Christians must, and can, stop uncritically accepting agenda-driven claims about Earth history made by secular scientists who deny the existence and revelation of God. ✍

Dr. Hebert is Research Associate at the Institute for Creation Research and earned his Ph.D. in physics from the University of Texas at Dallas.

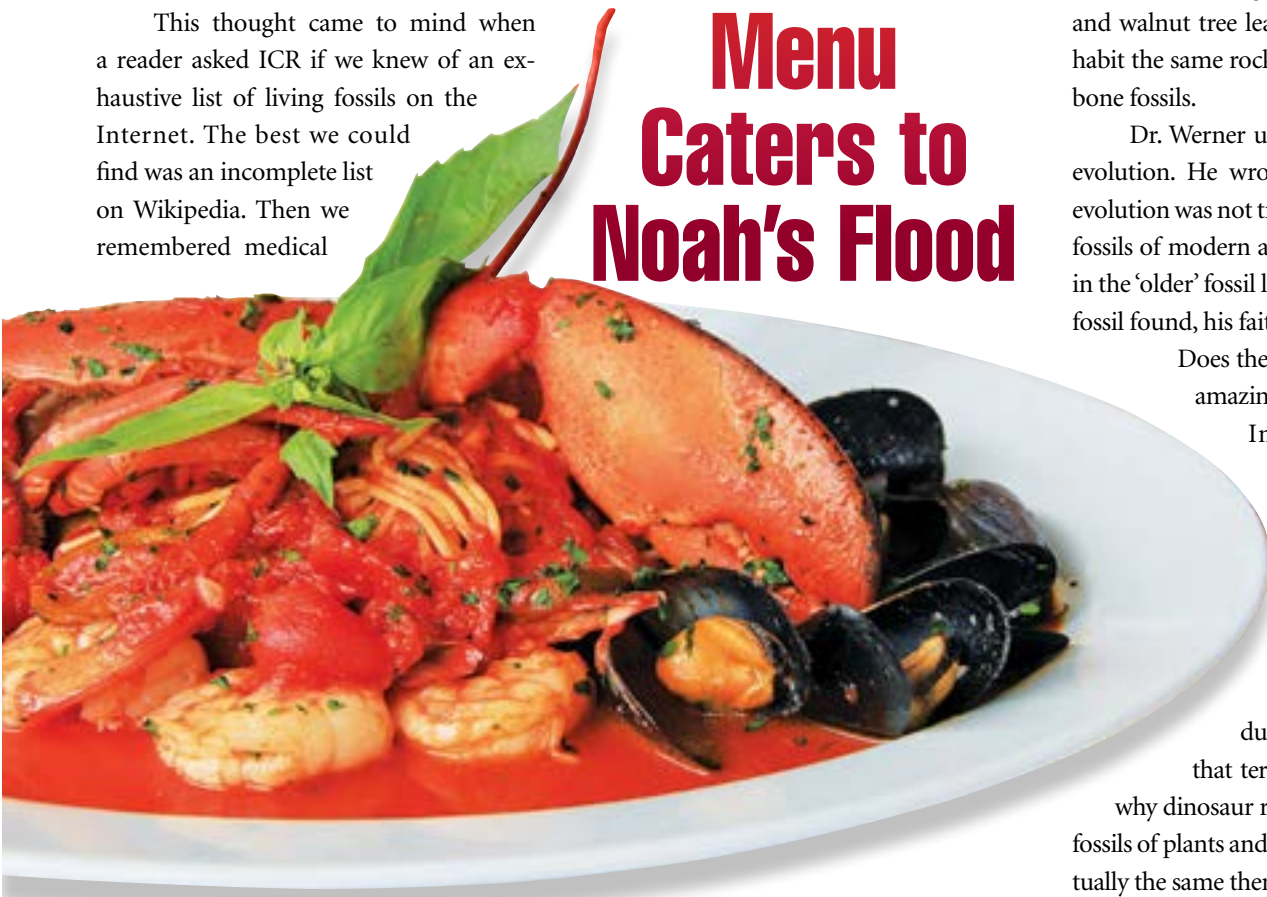


After looking over a long list of “living fossils”—living creatures with fossil look-alikes—I realized many of them are found on today’s seafood menus. What delectable dishes could a Mesozoic seafood restaurant offer a friendly *T. rex* family? Using real fossils to answer this whimsical question offers new reasons to think that Noah’s recent Flood, rather than eons of evolution, deposited the dinosaur-rich rock layers found all over the earth’s continents.

This thought came to mind when a reader asked ICR if we knew of an exhaustive list of living fossils on the Internet. The best we could find was an incomplete list on Wikipedia. Then we remembered medical

Sure enough, many Jurassic shrimp³ and Cretaceous mussels⁴ look essentially the same as those alive today. What about calamari? Dinosaur rocks also contain fossil squid. One found in England in 2009 had dried ink still in its ink sac.⁵

Mesozoic Seafood Menu Caters to Noah’s Flood



doctor Carl Werner’s book *Living Fossils*, complete with dozens of full-color photos of living and fossil plants and animals set side by side.¹ With Dr. Werner’s permission, a simple list of the living fossils in his book is now available online.² Hopefully, more folks can see that the familiarity of the life forms that died alongside dinosaurs opposes the evolutionary dogma of unlimited creature change. Now back to that Mesozoic menu.

Seafood restaurants offer fried calamari, shrimp, and mussels as appetizers.

Mrs. *T. rex* might choose Jurassic lobster as her main course. The fossil *Palinurina* looks just like the living spiny lobster *Panulirus*, and evolutionists might as well have given the lobster fossil *Eryma* the same name as the living, delicious Maine lobster *Homarus*.¹

Mr. *T. rex* can really put it away, so he orders scallops, oysters on the half shell, and a clam bake—creatures that all occur as fossils in dinosaur-containing rock layers. He could wash down his delicacies with

sassafras tea—a modern tree that’s also a living fossil.

Finally full, the *T. rex* family considers what to try on their next visit. The Mesozoic menu lists sturgeon, eel, flounder, herring, angel shark, goblin shark, and a favorite—orange roughy. Later, they could visit the Cajun restaurant at the other end of Sedimentary Street and try turtle soup, frog legs, gumbo, alligator tail, and, of course, roasted duck with sautéed pine nuts and walnuts. That’s right—duck fossil remains and walnut tree leaf fossil impressions inhabit the same rocks that include dinosaur bone fossils.

Dr. Werner used these species to test evolution. He wrote, “I predicted that if evolution was not true, then...I should find fossils of modern animal and plant species in the ‘older’ fossil layers.”⁶ With each living fossil found, his faith in evolution shrank.

Does the Bible better explain the amazing array of living fossils?

In the beginning, God created sea creatures, swamp plants, dinosaurs, and all the other animals. Later, Noah’s Flood mixed and deposited many of them together during different phases of that terrible year. This explains why dinosaur rock layers hold so many fossils of plants and animals that looked virtually the same then as they do today. ☞

References

1. Werner, C. 2009. *Living Fossils, Evolution: The Grand Experiment*, vol 2. Green Forest, AR: New Leaf Press.
2. Bob Enyart, host of the KGOV radio show *Real Science Friday*, and I worked together to get permission to compile and post the list. The Living Fossils List from Carl Werner is available through the link in the online article “RSR: Dr. Carl Werner and the Living Fossils” posted on kgov.com.
3. The fossil shrimp *Antrimpos* resembles living shrimp *Litopenaeus*.
4. The fossil mussel *Mytiloides* resembles living mussel *Mytilus*.
5. Glass, K. et al. 2012. Direct chemical evidence for eumelanin pigment from the Jurassic period. *Proceedings of the National Academy of Sciences*. 109 (26): 10218-10223.
6. Werner, *Living Fossils*, 10.

Mr. Thomas is Science Writer at the Institute for Creation Research.





Evolutionists Can't See Eye Design

R A N D Y J . G U L I U Z Z A , P . E . , M . D .

Ignorance and a limited perspective can lead to some pretty amazing blunders. Robert H. Goddard was a visionary trailblazer in the early days of rocket science. NASA lauded his accomplishments in a 2004 online article: “Now known as the father of modern rocketry, Goddard’s significant achievements in rocket propulsion have contributed immensely to the scientific exploration of space.”¹ The first to build a liquid-fuel rocket and launch a rocket payload, he is credited with 214 patents, and his list of rocketry firsts is astounding.

But despite his amazing scientific work, Goddard was the subject of some shameful treatment.

In 1920, the Smithsonian published his original paper, “A Method for Reaching Extreme Altitudes,” in which he included a small section stressing that rockets could be used to send payloads to the Moon. Unfortunately, the press got wind of this and the next day, the *New York Times* wrote a scathing editorial denouncing his theories as folly. Goddard was ridiculed and made to look like a fool.¹

The *New York Times* editorial mocked Goddard and questioned whether he knew any more than a high school student. It’s hard to quantify the arrogance it took for newspaper reporters who knew little about rocketry to criticize the work of a man clearly out of their league. Unchecked control over their news forum, coupled with an overestimation of their own self-importance, emboldened their abuse of journalistic privilege.

This account is instructive. Today, the content of mainstream scientific journals passes through chokepoints controlled by evolutionists. They’ve used that control to criticize several biological organs as “poorly designed”—especially the human eye. Does scientific evidence justify these assertions, or does it point to a deliberately limited frame of reference that these critics have on biological systems they simply do not fully understand?

Playing “Gotcha” with God

Evolutionists believe they have discovered numerous design flaws in living organisms. According to them, flaws arise because

organisms evolve bit by bit over long ages in a ruthless struggle to survive. Death, not intelligence, is embraced as the means that “fractions” out the DNA needed to build new traits in a process that somehow operates without thought or purpose. Brown University’s Kenneth Miller explains how his evolutionary beliefs contrast with seeing creatures as being made by a wise, benevolent God:

Though some insist that life as we know it sprang from a Grand Designer’s Original blueprints, Biology offers new evidence that organisms were cobbled together layer upon layer by a timeless tinkerer called evolution.²

Anything cobbled together by a “tinkerer” would likely have many mistakes—especially when compared to the creations of a craftsman. Thus, the evolutionist’s argument is that the presence of design mistakes reveals evolutionary tinkering and not the work of God. Richard Dawkins thinks he sees some huge problems in how the human eye is put together. To him, creationists are caught in a dilemma—either God did not design the eye or He made mistakes.

Dawkins begins with cells capable of detecting incoming light. These have photosensitive elements at one end and a nerve at the other end that conveys signals to the brain (Figure 1).

Light enters the front of the human eye, while the

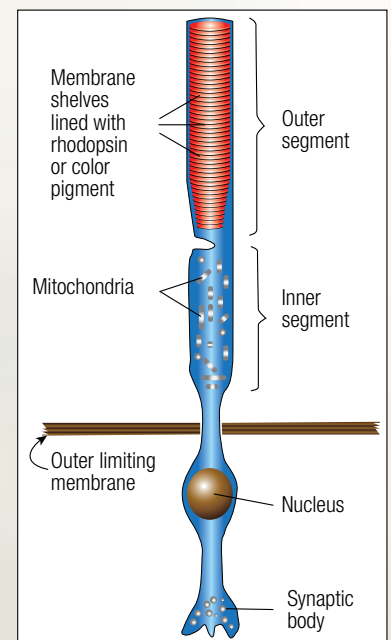


Figure 1. A rod photoreceptor cell. The outer segment is the light-sensitive portion. The inner segment and nucleus are essential for cell metabolism and replenish the outer segment. The synaptic body connects the photoreceptor to the nervous system that transfers data from the receptor to the brain.

brain is located behind it. Other eyes are built in a manner called *verted*, where the photosensitive elements face the front and the nerves go out the back. But vertebrate eyes are built *inverted*, where the photosensitive elements face the back and the nerves face front. The nerves come together at a specific location and U-turn out the back.

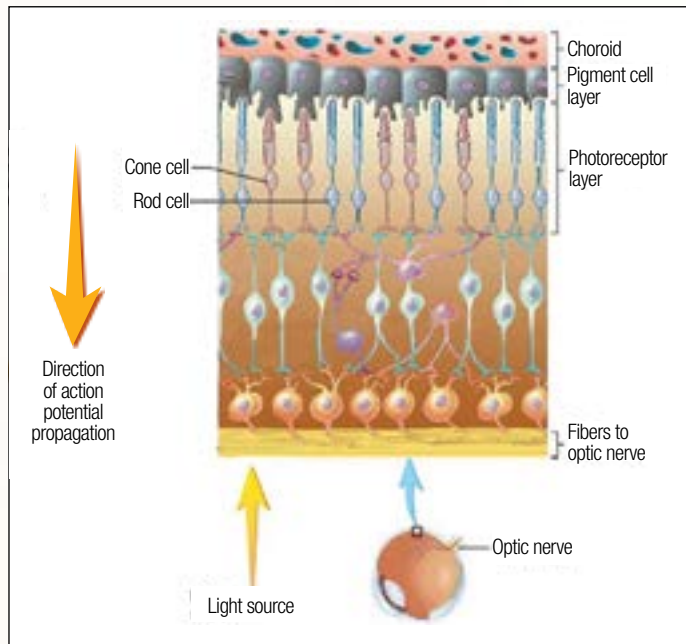


Figure 2. Enlarged cross-section through an inverted retina. Light enters the cornea and travels through transparent nerve fibers and nuclei before striking a cone or rod photoreceptor. The retinal pigment epithelium layer handles the high metabolic requirements of photoreceptors. Very high blood flow through the choroid meets the high energy demands and removes excess heat.

Image Credit: Copyright © 2002. *Textbook of Medical Physiology*. Arthur Guyton and John Hall. Adapted for use in accordance with federal copyright (fair use doctrine) law. Usage by ICR does not imply endorsement of copyright holder.

The “Poor Design” Mantra

Dawkins popularized the belief that anyone can simply look at the eye’s inverted layout and plainly see that it is a foolish design, that it is “wired backwards.”

Any engineer would naturally assume that the photocells would point towards the light, with their wires leading backwards towards the brain. He would laugh at any suggestion that the photocells might point away from the light, with their wires departing on the side *nearest* the light. Yet this is exactly what happens in all vertebrate retinas. Each photoreceptor is, in effect, wired in backwards, with its wire sticking out on the side nearest the light. The wire has to travel over the surface of the retina, to a point where it dives through a hole in the retina (the so-called ‘blind spot’) to join the optic nerve. This means that the light, instead of being granted an unrestricted passage to the photocells, has to pass through a forest of connecting wires, presumably suffering at least some attenuation and distortion (actually probably not much, still, it is the *principle* of the thing that would offend any tidy-minded engineer!).³

Dawkins was not the lone evolutionary voice on the subject.

Kenneth Miller later grabbed the baton, claiming, “Evolution, unlike design, works by the modification of pre-existing structures. . . . [It] does not produce perfection.” His prime example? “The eye, that supposed paragon of intelligent design, is a perfect place to start.”⁴ Miller parrots Dawkins’ disapproval:

Given the basics of this wiring, how would you orient the retina with respect to the direction of light? Quite naturally, you (and any other designer) would choose the orientation that produces the highest degree of visual quality. No one, for example, would suggest that the neural wiring connections should be placed on the side that faces the light, rather than on the side away from it. Incredibly, this is *exactly* how the human retina is constructed.⁴

Like Dawkins, Miller admits there is no evidence of poor eye performance: “None of this should be taken to suggest that the eye functions poorly. Quite the contrary, it is a superb visual instrument that serves us exceedingly well.” But the eye is not built the way *he* feels it should be: “The key to the argument from design is not whether or not an organ or system works well, but whether its basic structural plan is the obvious product of design. The structural plan of the eye is not.”⁴ Devotees of Miller should recognize that he subtly changed the basis for his criticism from an objective standard to his subjective opinion.

In scientific literature published concurrent with Dawkins’ comments, however, were many examples of complicated biological systems bearing multiple parts working together for a purpose. In this sea of documented biological complexity, evolutionary claims of poor design—without documented poor performance—rang hollow.

So, Francis Ayala, an evolutionary biologist and American Academy for the Advancement of Science president, joined the party. He began asserting that visual problems are caused by poor design. First, he claimed:

We know that some deficiencies are not just imperfections, but are outright dysfunctional, jeopardizing the very function the organ or part is supposed to serve. In the human eye, the optic nerve forms inside the eye cavity and creates a blind spot as it crosses the retina.⁵

But then, in a broad-brushed flail against intelligent design, he pronounced that “it is not only that organisms and their parts are less than perfect, but also that deficiencies and dysfunctions are pervasive, evidencing ‘incompetent’ rather than ‘intelligent’ design.”⁶ However, the real experts—actual neuroscientists—weren’t documenting dysfunctional eyes.

Bad Design or Optimized Design?

Dawkins and other evolutionists may think that since the performance of *one* particular eye trait isn’t maximized then it’s irrelevant to investigate the entity as a functional whole. This practice leaves them ignorant of good reasons for design tradeoffs or other involved factors.

There is no excuse for this “poor design” blunder. When Dawkins, Miller, and Ayala made their claims, abundant existing information related how retinal tissues marvelously balance design

solutions to several competing physical challenges—simultaneously—to begin converting light fluctuations into useful information. Engineers regularly need to concurrently satisfy numerous competing interests. When engineers optimize a design, they find solutions for several conflicting demands—a hallmark of sophisticated engineering.⁷

In the eye, this light-processing optimization requires 1) a mechanism to detect light, 2) a quick replenishment of that light-detecting mechanism to enable its extended use in large quantities of light, which tends to destroy tissue, 3) the removal of heat from the highly metabolic process before the heat destroys protein function, 4) the removal of heat from light focused on the retina, and 5) the prevention of light reflecting inside the eye after it passes through the photoreceptors. For human eyes, how could engineers optimally balance these major factors so the retina can work properly? They'd solve the problem by building an inverted retina! Photoreceptors must be inverted and embedded in the retinal pigment epithelium, a cell layer just outside the retina (Figure 2).

This vital tissue removes waste and helps remove heat from the rapidly regenerating receptors.⁸ Its black granule pigment prevents light-scattering. The choroid's extensive network of blood vessels supports the high metabolic needs of photoreceptors and functions like a car radiator to absorb additional heat.⁹ Researchers have known for decades that the “uninsulated” nerve fibers leaving the photoreceptors spread apart, making this layer light-transparent.¹⁰ In addition, retinal Müller cells conduct light from front to back like fiber optic cables. One paper described their remarkable properties: “The increasing refractive index together with their funnel shape at nearly constant light-guiding capability make them ingeniously designed light collectors.”¹¹ This enables the light-sensitive molecules to detect light regardless of which way the retina is oriented.

Simply put, if our eyes were built according to evolutionists' expectations, we'd all be blind.

“Poor Design” Claims Are Spectacularly Wrong

One neurophysicist effectively summed up how human eyes couldn't be more sensitive to light:

“If you imagine this, it is remarkable: a photon, the smallest physical entity with quantum properties of which light consists, is interacting with a biological system consisting of billions of cells, all in a warm and wet environment,” says [Rockefeller University professor Alipasha] Vaziri. “The response that the photon generates survives all the way to the level of our awareness despite the ubiquitous background noise. Any man-made detector would need to be cooled and isolated from noise to behave the same way.”¹²

One research study simply concludes, “The retina is revealed as an optimal structure designed for improving the sharpness of images.”¹³ Another account extolls the eye's extraordinary performance:

“Photoreceptors operate at the outermost boundary allowed by the laws of physics, which means they are as good as they can be, period.”

“Photoreceptors operate at the outermost boundary allowed by the laws of physics, which means they are as good as they can be, period.”¹⁴

A 2014 report on the vast contradictory scientific evidence against long-standing claims of poor eye design stated:

Having the photoreceptors at the back of the retina is not a design constraint, it is a design feature. The idea that the vertebrate eye, like a traditional front-illuminated camera, might have been improved somehow if it had only been able to orient its wiring behind the photoreceptor layer, like a cephalopod, is folly.¹⁵

Every statement by Dawkins, Miller, Ayala, and others about the eye's poor design—from photocells being “wired backwards” to the eye being “outright dysfunctional”—is scientifically incorrect. “Folly” accurately describes their blunder. Their ignorance surpasses that of the journalists who criticized the aeronautical genius of Robert Goddard. By asserting that our eye's design isn't what a *sensible* human engineer would do, these evolutionists mock God. Their smug ridicule of eye anatomy and their claims that it is exhibit A for poor design are now embarrassingly exposed as a clear scientific blunder.

Time and truth go hand in hand. Goddard was right and the journalists wrong. NASA noted:

A day after Apollo 11 set off for the Moon, in July of 1969, the New York Times printed a correction to its 1920 editorial section, stating that “it is now definitely established that a rocket can function in a vacuum as well as in an atmosphere. The Times regrets the error.”¹⁶

Though greatly belated, the *Time's* humble retraction is honorable. Science shows that God is also due a retraction. Time will reveal how well humility fits into the “struggle for survival” mindset of the evolutionists who have denied His engineering genius and creative craftsmanship. ✂

References

1. Marconi, E. M. Robert Goddard: A Man and His Rocket. Posted on NASA.gov March 9, 2004, accessed July 15, 2016.
2. Miller, K. R. 1994. Life's Grand Design. *Technology Review*. 97 (2): 24-32.
3. Dawkins, R. 1987. *The Blind Watchmaker*. New York: W. W. Norton & Co, 93.
4. Miller, Life's Grand Design.
5. Ayala, F. J. 2007. *Darwin's Gift to Science and Religion*. Washington, D.C.: Joseph Henry Press, 22.
6. Ibid, 155.
7. Guliuza, R. 2012. *Clearly Seen: Constructing Solid Arguments for Design*. Dallas, TX: Institute for Creation Research, 32-33.
8. Anderson, D. H., S. K. Fisher, and R. H. Steinberg. 1978. Mammalian cones: Disc shedding, phagocytosis and renewal. *Investigative Ophthalmology and Visual Science*. 17 (2): 117-133.
9. Parver, L. M., C. R. Auker, and D. O. Carpenter. 1983. Choroidal blood flow: III. Reflexive control in human eyes. *Archives of Ophthalmology*. 101 (10): 1604-1606.
10. Hamilton, H. S. 1985. The Retina of the Eye—An Evolutionary Roadblock. *Creation Research Society Quarterly*. 22 (2): 59-64.
11. Franze, K. et al. 2007. Müller cells are living optical fibers in the vertebrate retina. *Proceedings of the National Academy of Science*. 104 (20): 8287-8292.
12. Study suggests humans can detect even the smallest units of light. Rockefeller University news release. Posted on newswire.rockefeller.edu July 20, 2016, accessed July 21, 2016.
13. Labin, A. M. and E. N. Ribak. 2010. Retinal glial cells enhance human vision acuity. *Physical Review Letters*. 104 (15): 158102.
14. Angier, N. Seeing the Natural World With a Physicist's Lens. *New York Times*. Posted on nytimes.com November 1, 2010, accessed July 26, 2012. For the extended quote, see Thomas, B. Eye Optimization in Creation. *Creation Science Update*. Posted on ICR.org November 23, 2010.
15. Hewitt, J. Fiber optic light pipes in the retina do much more than simple image transfer. *Phys.org*. Posted on phys.org July 21, 2014, accessed July 21 2016.
16. Marconi, Robert Goddard: A Man and His Rocket.

Dr. Guliuza is ICR's National Representative.



Q: So Many Skin Tones from Adam and Eve?

A: After viewing the mixture of widely different skin tones at a recent church gathering, a long-time *Acts & Facts* reader asked how so much variety came from only three pairs of human beings—Shem, Ham, and Japheth and their wives. How could all these skin tones come from just these people? Winding the clock back even further, Bible history implies that all skin tones came not from three human pairs but from one: Adam and Eve. Do the genetics of skin color match this Bible-based idea?

Like many animals, human bodies produce melanin—a chemical of color. Melanin darkens moth wings, bird feathers, human skin, and animal fur.¹ For example, black bears range across at least 40 U.S. states. Most black bears have black fur, dense with melanin, but some have brown. I watched a huge black bear walk right through my campsite this past summer, but its fur was reddish blonde. Fortunately, it loped off after it heard me trying to escape up the nearest tree. Blonde and cinnamon-red black bears can interbreed with dark black bears, showing that these varieties belong to the same basic kind. Different human “races” similarly reduce to varieties in the same basic human kind.

Hunters and wildlife biologists have even seen black and white bears as siblings!² These “white black bears” and white polar bears have very little melanin in their fur. And all these color varieties descended from just two bears that endured the terrible Flood year on the Ark along with Noah and his family. Gene shuffling that occurs every generation can produce different amounts of melanin in baby bears, just as it can in human hair and skin.

Readers of ICR.org may recall a March 2015 online news article that helped answer the skin tone question by featuring Lucy and Maria Aylmer.³ Although they are twin sisters from a mother with brownish skin and a white father, Lucy told the *New York Post*, “No one ever believes we are twins because I am white and Maria is black.”⁴ As children, Lucy had reddish-blond, wavy hair, and Maria had black, curly hair.

Where did this color diversity come from? Many see it as the expression of different races, but according to the Bible all people belong to just one human race. When the apostle Paul pronounced



Twins Maria (left) and Lucy Aylmer (right) pose together. The twins' mother is half-Jamaican, and their father is white.

Bible basics to the people of Athens, he said, “And He has made from one blood every nation of men to dwell on all the face of the earth.”⁵ Genetically, over 99% of your DNA sequence matches anyone else’s on the planet.⁶ Genetics therefore confirms the biblical view of one human race.

Seeing people as being of different races could reflect evolutionary thinking. Do we need hundreds of thousands of years of evolution to explain all this human variety? No—just like “white black bear” fur color, twins like Lucy and Maria show that skin tone variations can arise through normal genetic processes in just one generation. No need for evolutionary time.

Our great Creator placed into Adam and Eve a way for their descendants to express different levels of melanin and other pigments. The Lord showed His love for creativity when He crafted gene-shuffling protocols that can generate such a kaleidoscope of color tones in animals and humans. ✨

References

1. More accurately, animals and humans produce pigment varieties classed as either brown-black eumelanins or red-yellow pheomelanins. Genetic mixing of different pigments at different levels generates a much wider variety of skin tones in each generation than would a single pigment.
2. Woodford, R. White Black Bears and Blonde Grizzlies: Alaska Bears Wear Coats of Many Colors. *Alaska Fish & Wildlife News*. Posted on adfg.alaska.gov September 2007.
3. Thomas, B. Twins Provide Peek into Mankind’s Origin. *Creation Science Update*. Posted on ICR.org March 26, 2015, accessed July 20, 2016.
4. Perez, C. Meet the biracial twins no one believes are sisters. *New York Post*. Posted on nypost.com March 2, 2015, accessed March 8, 2015.
5. Acts 17:26.
6. Rosenberg, N. A. et al. 2002. Genetic Structure of Human Populations. *Science*. 298 (5602): 2381-2385.

Mr. Thomas is Science Writer at the Institute for Creation Research.

SOBA Graduate Interview: Pastor Richard Corwin

In 2009, the Institute for Creation Research founded the School of Biblical Apologetics to provide training in biblical education and apologetics with a special emphasis on Genesis 1–11. ICR’s Dr. Jim Johnson recently interviewed Pastor Richard Corwin, who graduated from SOBA’s Master of Christian Education program in June 2015.

Q: Pastor Richard, how much attention did your first seminary program give to the importance of Genesis?

A: The Master of Theology degree in my first seminary required only a survey of the Old Testament and assigned other O.T. courses as electives. Their doctrine relegated the Old Testament to an allegorical-historical view with limited application to the modern church. The interpretation of Genesis depended on the individual professor, but most of the teachers appeared comfortable with the day-age hypothesis. It was only when I began my M.C.Ed. studies at ICR that I was introduced to the importance of biblical creation as a foundation for Christian doctrine and its bearing on the teaching and authority of Jesus Christ as Lord and Savior.

Q: How important is having a solid foundation in Genesis for a pastoral ministry?

A: The pastor is expected to preach the whole counsel of God without qualification, reservation, or equivocation. The pastor who doesn’t trust the history of Genesis 1–11 must spend a lifetime making ex-

cuses for the character and integrity of our Lord Jesus, who repeatedly quoted Genesis as true history. In addition, the doctrine of the Fall and sin, the need for redemption, the dignity of man, the Messiah foretold in Genesis 3:15, His genealogy, His insistence in John 8:56 that Abraham “saw His day,” and His appearance with Moses and Elijah in Matthew 17:2-3 crumble into the dust of fantasy if Genesis isn’t true history. The book of Genesis is the legs on which the whole doctrine of the body of Christ stands.

Q: Did you find SOBA’s class requirements easy to work with?

A: Because the ICR online program encourages the student to take one course at a time, I was able to pace myself and set aside two days a week for dedicated study. Resources included books by Dr. Henry Morris, Francis Schaeffer, and others familiar to me. The real challenge was research, but much of the material was available online or through libraries. Not only was the degree program worth my time, I now miss the research! Even

though I graduated, there are a few subjects I haven’t taken that I want to study in the future.

Q: How has ICR’s M.C.Ed. online degree program helped you in your ministry and your life?

A: As a pastor and a homeschool father, the M.C.Ed program has provided articulate answers for the defense of the faith. It enabled me to communicate the historical, scientific, and doctrinal authority of Scripture to my congregation and to my children. The program gave me a more complete view of God’s redemptive plan that began before the foundation of the world. It filled in the theological vacuum that came from dismissing the Old Testament Scriptures and showed me the rich tapestry of Hebrew signs, symbolism, and prophecy that makes the interpretation of the New Testament more understandable.

ICR’s program also gave me a fresh look at my own life and the despair of being raised by an abusive, atheist father, and allowed me to see the redemptive hand of God. It allowed me to have a critical view of the church that has unknowingly adopted the “death image” of evolution into its doctrine in an attempt to appease the evolutionists. More importantly, it has introduced my country church to teaching that is usually limited to larger congregations. ✂

For more information about ICR’s School of Biblical Apologetics, visit ICR.edu.

Dr. Johnson is Associate Professor of Apologetics and Chief Academic Officer at the Institute for Creation Research.

“The pastor who doesn’t trust the history of Genesis 1–11 must spend a lifetime making excuses for the character and integrity of our Lord Jesus, who repeatedly quoted Genesis as true history.”





CRS

Creation Research Society Conference 2016



Image credit: Copyright © 2016 D. Faulkner. Adapted for use in accordance with federal copyright (fair use doctrine) law. Usage by ICR does not imply endorsement of copyright holder.

On July 29–30 this past summer, 128 creationists gathered at Concordia University in Ann Arbor, Michigan, to attend the Creation Research Society's annual conference. Headquartered in Chino Valley, Arizona, the Creation Research Society (CRS) is a professional organization of scientists and laymen who are firmly committed to scientific special creation. This year's conference saw a fascinating cross-section of research conducted by individual scientists and teams under the umbrella of organizations such as the Institute for Creation Research and Answers in Genesis.

ICR's Dr. Jake Hebert presented an update on his seafloor-sediment work, which is nearing completion. This research was well received at both the 2015 and 2016 CRS meetings. Creation scientists have a compelling explanation for a single post-Flood Ice Age. Because uniformitarian scientists reject the Bible's history, they cannot make use of this explanation and must propose alternatives. Currently, the Milankovitch (or astronomical) theory is widely accepted because of a 1976 paper published in the journal *Science*. Dr. Hebert found problems with this paper that are serious enough to invalidate its results. He is in the process of re-working the original calculations after taking into account a significant revision that uniformitarian scientists made to their timescale. Dr. Hebert already published the first two parts of his research and is finishing up part three.¹ These results have the potential to be profoundly challenging to uniformitarian scientists.

Dr. Randy Guliuzza presented "Con-

tinuous environmental tracking: key sensors and condition-consequence processes." This project examined whether creatures actively track environmental change through inborn mechanisms that enable them to fill new niches. This opposes the idea that creatures are relatively passive organisms whose adaptations are mostly driven by geological and climatic pressures, as described in Stephen J. Gould's *The Structure of Evolutionary Theory*. Dr. Guliuzza showed that "sensors are the key element at entity-environment interfaces—the principle trigger of self-adjusting systems." He went on to explain that "organisms' sensors facilitate environmental tracking," and he also presented some of the increasing evidence showing God engineered creatures with systems that detect changes in external conditions and then effect needed self-adjustments.

Dr. Jason Lisle gave an outstanding presentation regarding "the fallacious nature of all old-earth arguments." He examined the logical structure of the scientific arguments used to support the idea that Earth is billions of years old. Dr. Lisle showed that old-earth arguments tacitly and arbitrarily presuppose conditions that are only reasonable to hold if biblical history is rejected. Using such assumptions as an argument against the biblical timescale is fallacious since the argument's conclusion is part of the argument's premise.

Dr. Tim Clarey presented a plenary session titled "Megasequences, Ecological Zonation and the Fossil Record: A Tale of Two Continents." This presentation updated his ongoing research into the global nature of the Flood sediments, in this case detailing the

Flood as recorded in the stratigraphic columns of North America and Africa. Dr. Clarey documented many similarities in the observable rock record across both continents. These data continue to confirm the global nature of the Flood and may even explain the order of the fossil record.

Dr. Clarey presented a second paper co-authored with Dr. Jeff Tomkins titled "An In Situ Lycopod Forest Site in Glasgow, Scotland Invalidates the Floating Forest Hypothesis." This presentation put forth convincing fossil evidence invalidating the speculation held by some creationists that large continent-size marine floating forests may have existed prior to the global Flood. Instead, the fossil data clearly show that the plants supposedly associated with a floating forest (arboreal lycopods) were in fact embedded in ancient soil that was inundated and buried in Flood sediments. In addition to the fossil data presented in this talk, Dr. Clarey published a paper on a variety of geological data that also invalidate the floating forest idea.²

The 2016 CRS conference was a confirmed success with exceptional presentations and a record number of attendees. Join us next year! ☞

References

1. Hebert, J. 2016. Revisiting an Iconic Argument for Milankovitch Climate Forcing: Should the "Pacemaker of the Ice Ages" Paper Be Retracted? Part 1. *Answers Research Journal*. 9: 25-56; Hebert, J. 2016. Revisiting an Iconic Argument for Milankovitch Climate Forcing: Should the "Pacemaker of the Ice Ages" Paper Be Retracted? Part 2. *Answers Research Journal*. 9: 131-147.
2. Clarey, T. 2015. Examining the floating forest hypothesis: a geological perspective. *Journal of Creation*. 29 (3): 50-55.

Mr. Sherwin is Research Associate, Senior Lecturer, and Science Writer at the Institute for Creation Research.



Showcasing the Evidence



God first expressed His great love toward mankind in the first chapter of the first book of the Bible. “Then God blessed them, and God said to them, ‘Be fruitful and multiply; fill the earth and subdue it; have dominion over the fish of the sea, over the birds of the air, and over every living thing that moves on the earth’” (Genesis 1:28). Note that the command was preceded by the Creator’s direct blessing, establishing a pattern seen throughout Scripture. Even on occasions when God says, “You shall not,” He does so to protect and guide those He loves.

This first command—the dominion mandate—was given both as a blessing and a responsibility. Adam and Eve soon discovered that God’s instructions encompassed far more than they could have imagined at the time. Not only were they expected to begin populating the earth, they were also to manage the resources God placed around them. In this way, God would receive glo-

ry from His new creation while providing mankind the privilege of sharing in the earth’s magnificent bounty.

This mandate has never been revoked and was even renewed and expanded through Noah soon after the great Flood (Genesis 9:1-7). God will eventually destroy this world and create “new heavens and a new earth” (2 Peter 3:10-13) when His plan of redemption and judgment is complete. But until that time, man is expected to fulfill God’s command to care for and rule over this world.

The military terminology to “subdue” and “have dominion” should not be misunderstood as God’s permission to abuse and destroy. Rather, God clarifies His intention as one of caring stewardship of His creation: “Then the LORD God took the man and put him in the garden of Eden to tend and keep it” (Genesis 2:15). Adam was given the responsibility to manage and cultivate God’s creation, indicating a special care and concern for the earth’s resources. But

proper “tending” and “keeping” cannot occur without a thorough understanding of the underlying processes. We know this as science in today’s terms, and in the biblical sense God expected humans to undertake scientific study to accomplish this very first commission.

Science lies at the very heart of ICR’s work. Apart from the study of God’s Word, our research is the catalyst that sparks our entire ministry. For over four decades, ICR has championed innovative research that demonstrates evidence for creation as understood in Scripture. And thanks to our supporters, ICR scientists have uncovered a wealth of evidence that confirms the accuracy of the biblical account of origins.

But the world is largely ignorant of the evidence, and so are many Christians. The sad result is the wholesale acceptance of evolutionary explanations that conflict with the truth. We need a place to showcase the evidence for all to see, and the ICR Discovery Center for Science and Earth History will do so in exciting and engaging ways. Won’t you prayerfully consider how you can partner with us to bring this about? Your tax-deductible gifts will make a bigger difference than you may imagine and will be put to good and effective use to communicate the truth of our Creator, the Lord Jesus Christ. Please visit ICR.org for more information on the Discovery Center and how you can be a part of reaching the next generation with God’s creation truth. ✍

Mr. Morris is Director of Donor Relations at the Institute for Creation Research.



PRAYERFULLY

CONSIDER SUPPORTING
ICR

GALATIANS 6:9-10

Through

- Online Donations
- Stocks and Securities
- IRA Gifts
- Matching Gift Programs
- CFC (Federal/Military Workers)
- Gift Planning
 - Charitable Gift Annuities
 - Wills and Trusts

Visit ICR.org/give and explore how you can support the vital work of ICR ministries. Or contact us at stewardship@icr.org or **800.337.0375** for personal assistance.

ICR is a recognized 501(c)(3) nonprofit ministry, and all gifts are tax-deductible to the fullest extent allowed by law.

Thank you so much for the subscriptions. My days left are few (stage 4 cancer) making my zeal to share the truth that much more urgent....Your publications and resources will be helping me.

— B. D.

“Subatomic Particles, Part 2: Baryons”
(August 2016 *Acts & Facts*)

Subatomic puzzle pieces all somehow fit together. It certainly couldn't be by accident, since they “fit together” to form atomic particles that form atoms, that form molecules, that form chemicals, that form the basis for biochemistry...the basis for physical living systems...DNA, RNA, proteins, etc. Amazing designed engineering.

— A. T.

Response to “Tim LaHaye and the Institute for Creation Research” (September 2016 *Acts & Facts*)

The tribute to Dr. LaHaye in the September issue of *Acts & Facts* is well done, and so I share a brief encounter I experienced with Tim in Japan, late '70s. I attended a chapel service where Tim was guest preacher. I am a physicist and was stationed in Japan at the time. He touched on parts of Genesis during the service, which challenged me. At the end of the service I approached him and remarked that I am a scientist and could he recommend reading material that supported his sermon statements. Without hesitation he said, “Get Dr. Henry Morris’ book *The Genesis Flood*.” I did and have been a strong advocate and supporter of ICR ever since. Both Dr. LaHaye and Dr. Morris have done remarkable and wondrous work in furthering God’s Word, especially to those like me with science backgrounds who confronted evolutionary arguments—arguments now laid to rest for me and others.

— J. S.



Response to Cambrian Explosion *That’s a Fact* video

There are so many ways to disprove evolution. My favorite is DNA. It is biochemically and mathematically impossible for DNA, or any other part of a living cell, to have formed by accident. Even Francis Crick (one of the discoverers of DNA) realized that it could not have formed by chance so [he] hypothesized that aliens brought it here.

— M. R. B.

ICR Discovery Center for Science and Earth History

Will have to plan a trip when it is finished.

— M. M.



Wow, this is absolutely fantastic and, yes, so needed. Yes, I will send money to help.

— P. J. W.

Podcasts

I appreciate your new podcasts....Thank you so much for making this information available to us in podcast form so I can listen while driving, as I don't always have the time to read the articles. I am submitting a donation today in the hope that it might help you keep this series of podcasts going....Thank you again for all the great work you guys do. Your website is truly a blessing, and this podcast series is the icing on the cake.

— M. B.



My family and I have supported ICR and enjoyed your publications for many years. I was first introduced to ICR while a teenager at a Christian school long ago. We introduced our daughter to biblical creation at an early age with books from ICR. Your ministry has truly been a blessing to our family for decades....A year or so ago, I was particularly concerned to learn that John D. Morris, Ph.D., had experienced a serious health problem. Is it possible to get an update on how he is doing?

— B. W.



Editors’ note: Dr. John Morris has recovered quite well. While he is officially retired, he still maintains his office at ICR, works with the scientists, and attends conferences. His *Back to Genesis* radio programs air on stations throughout the country Monday through Friday each week. He also continues to contribute to *Days of Praise*.

Have a comment? Email us at editor@icr.org or write to

Editor, P. O. Box 59029, Dallas, Texas 75229.

Note: Unfortunately, ICR is not able to respond to all correspondence.

Partner with ICR through the CFC!



P. O. Box 59029, Dallas, TX 75229
www.icr.org

United States federal and military employees can uphold the authority of Scripture by supporting the Institute for Creation Research through the **Combined Federal Campaign** (CFC). Our CFC identification number is **23095**, and our charity classification is National/International. For CFC donation questions, write to **stewardship@icr.org** or call **800.337.0375**.



The Independent Charities Seal of Excellence has been awarded to ICR. The Independent Charities of America and Local Independent Charities of America have certified that ICR meets the highest standards of public accountability, program effectiveness, and cost effectiveness. These standards include those required by the U.S. government for inclusion in the Combined Federal Campaign. Of the 1,000,000 charities operating in the U.S. today, it is estimated that fewer than 2,000 have been awarded this seal.

Charity Navigator, America's largest and most influential charity evaluator, has awarded ICR its highest rating. As an Exceptional Four-Star charity, ICR exceeds industry standards and outperforms most charities in our category based on financial health, accountability, and transparency.



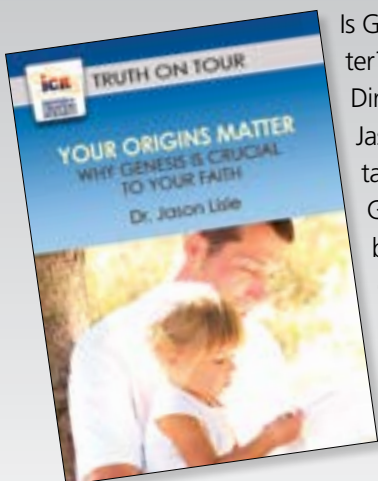
Your Combined Federal Campaign donation to ICR is tax-deductible!

Don't forget! State employees of Texas and California can also support ICR through state charitable campaigns.

Your Origins Matter: Why Genesis Is Crucial to Your Faith

Dr. Jason Lisle

\$7.99 (Reg. \$9.99) – DWGICTYF



Is Genesis true? Does it even matter? In this presentation, ICR's Director of Physical Sciences Dr. Jason Lisle discusses the importance, truth, and relevance of Genesis. Discover how the first book of the Bible lays the foundation for the rest of Scripture and why it is critical to understanding the gospel message.

New DVDs!

Discovering Dinosaurs: Five Details from Fossils and History

Brian Thomas

\$7.99 (Reg. \$9.99) – DDD



Where did dinosaurs come from? When did they live, and why did they go extinct?

According to evolutionary history, dinosaurs evolved over eons of time and then mysteriously died out 65 million years ago. According to biblical history, dinosaurs were created just thousands of years ago and were largely wiped out by a global flood. Which one is right?

In this update to *Dinosaurs and Man*, ICR's Brian Thomas provides five clues from rocks, fossils, ancient documents, and Scripture that point to recent creation.

Call **800.628.7640** or visit **ICR.org/store** • Please add shipping and handling to all orders. • Offer good through October 31, 2016, while quantities last.