

ACTS & FACTS

INSTITUTE FOR
CREATION RESEARCH

www.icr.org

NOVEMBER 2014

VOL. 43 NO. 11

Unlocking the Times

page 5



The Iconic Isochron
page 10

Lungfish Design Is Walking Tall
page 14

**Genetic Entropy Points to
a Young Creation**
page 16

**Carolus Linnaeus:
Founder of Modern Taxonomy**
page 18

UNLOCKING THE MYSTERIES OF GENESIS

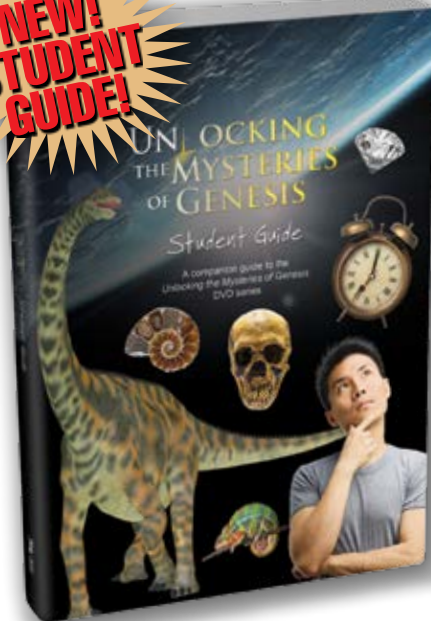
Groundbreaking DVD series now at this special price!

\$99.00

Plus shipping and handling. For a limited time only. Includes one viewer guide—additional viewer guides sold separately.



NEW! STUDENT GUIDE!



Get the companion Student Guide for only **\$12.99!** (regular price \$14.99)

Plus shipping and handling. BUTMGS

Buy two for **\$22.00!**
SBUTMGS

Filled with dozens of educational activities and cool facts about creation, our new Student Guide equips viewers with even more knowledge about every episode of *Unlocking the Mysteries of Genesis*. Designed to provide exactly what you need to make creation science a part of your child's curriculum!

To order, call **800.628.7640** or visit **www.icr.org/store**

Introductory price for a limited time only.

Unlocking the Mysteries of Genesis Student Guide

Brainy Buzzwords

Evidence You Can See

Using the word bank, fill in the blanks. Some words may be used more than once.

evolution	scientific evidence	theory of evolution	adaptation
inheritance	genetic evidence	genetic	adaptation
bird	complexity	bird	species
Carl Linnaeus	DNA	theory of evolution	theory of evolution
complexity	DNA	theory of evolution	theory of evolution
complexity	DNA	theory of evolution	theory of evolution
complexity	DNA	theory of evolution	theory of evolution
complexity	DNA	theory of evolution	theory of evolution

- When we look at the world around us, do we see _____ or do we see _____?
- Let's consider a _____ of these lines that have a marked similarity. All of them resemble _____ above design that's probably related to which they live.
- We see group animals, plants, and even animals interrelated _____ simply because there are such major similarities. Back in 1781, _____ noted that the tracks of things it occurred in the same _____ because of _____.
- When animals change and adapt to match their surroundings, we call this _____ like a _____ after seeds to be green, he'll be green. Or horses are black, or whatever for seeds.
- What is evidence on the _____ of the fossil of evolution. They originate our origin by _____ which says that the animal that is the most to give to some of the fossil. And the ones that are the best do not.
- Evolutionists say similarity on Earth's common ancestor because we all came from the same _____ and that through natural selection we adapted because that are similar but unique to our own species.

Episodes

- Creation scientists believe that animals and plants _____ their own _____ for those to have simply happened randomly.
- Design is _____ but design is also _____.
- Creation scientists agree that animals do adapt. But here, they point out that animals _____ self within their own kind—big cats to birds _____ and big dogs to birds _____ Yet from one kind to another _____.
- What _____ is the program that runs the machinery of our body.
- Related selection is often a common. Nature can select because the _____ are already designed into each creature's DNA.
- In order for evolutionists to get their theory to work, they only need one extremely artificial bit of evidence—the _____ being _____ called the _____ birds.
- But, there's not one bit of solid _____ for any creature that evolutionists agree is a transitional form. But there's natural selection changed one species to another _____.

Episode 1 Uniqueness of Earth

The universe holds many galaxies with countless seas, stars, and probably planets as well, but evidence shows that Earth is unique among them all.

"And God called the dry land Earth, and the gathering together of the waters He called Seas, And God saw that it was good."
— Genesis 1:10

The Big Bang theory assumes there are no special places in the universe and that everything around us is the result of a cosmic accident with no planning or purpose. So if life evolved on Earth and conditions here are our "special," then surely life would also have evolved elsewhere—right? Not quite. The Bible and science point to a different history that is supported by reliable evidence.



5



10



15



18



20

ACTS & FACTS

VOLUME 43 NUMBER 11
NOVEMBER 2014

Published by
INSTITUTE FOR CREATION RESEARCH
P. O. Box 59029
Dallas, TX 75229
214.615.8300
www.icr.org

EXECUTIVE EDITOR
Jayme Durant

SENIOR EDITOR
Beth Mull

EDITORS
Michael Stamp
Truett Billups

DESIGNER
Dennis Davidson

No articles may be reprinted in whole or in part without obtaining permission from ICR.

Copyright © 2014
Institute for Creation Research



FEATURE

5 Unlocking the Times

HENRY M. MORRIS III, D.MIN.

BioORIGINS PROJECT UPDATE

9 Purpose, Progress, and Promise, Part 2

NATHANIEL T. JEANSON, PH.D.

IMPACT

10 The Iconic Isochron

VERNON R. CUPPS, PH.D.

BACK TO GENESIS

14 Lungfish Design Is Walking Tall

BRIAN THOMAS, M.S.

15 Traditions of a Global Flood

JOHN D. MORRIS, PH.D.

16 Genetic Entropy Points to a Young Creation

JEFFREY TOMKINS, PH.D.

CREATION Q & A

17 Do Darwin's Finches Prove Evolution?

BRIAN THOMAS, M.S.

18 Carolus Linnaeus: Founder of Modern Taxonomy

JERRY BERGMAN, PH.D.

APOLOGETICS

20 People Yet to Be Created

JAMES J. S. JOHNSON, J.D., TH.D.

21 Living Missionally

EMILY MORRIS

STEWARDSHIP

22 Countless Blessings

HENRY M. MORRIS IV



A Season of Change

Fall is our reminder that summer doesn't last forever. Seasons come and go. Nothing in life stays the same—children grow up and get married, once-agile bodies begin to creak and pop, and trees display their boldest colors before shedding their bountiful foliage. And while most of us welcome the relief from searing-hot days, we can sense the passing of time with the turning of yellow, orange, and red leaves—the signal that today is a mere moment. Bare branches and gray landscapes are around the corner, heralding that opportunities in life are also fleeting. Some even disappear forever.



While this description may sound bleak, autumn offers the call to be wise with our time—to sense the urgency to share the message of Christ and to proclaim His goodness while we have the opportunity. But if we're not careful, we'll find ourselves racing through the fall and getting caught up in holiday busyness without taking the time to see the possibilities before us—the chances to offer praise to God, make changes in our own lives, and make a difference in the lives of others.

What can a minute or two of our time mean to someone else? A phone call. A grateful note or email. A simple word of encouragement. A sought-after answer or an affirmed decision. An offer of physical aid or financial help. Maybe someone just needs to know they matter.

ICR was founded on the principle of making a difference in the world—to proclaim creation truths where misinformation has clouded the minds of many. The Morris family has committed their lives and resources to reaching others, as we see in the Morris generations represented in this issue. Dr. Henry Morris III says, “There is ambivalence in young people. The Millennials remain the most conflicted, opinionated, optimistic, unsure, and unreached demographic in our lifetimes” (pages 5-7). Dr. Morris underscores the need for believers to share truth with others. Henry Morris IV reflects on God's goodness (page 22), while his daughter Emily, a Millennial herself, describes “living missionally” this past summer in Taiwan (page 21).

Thanksgiving is a time to acknowledge God's goodness to us. His grace, unlike the fall leaves, will remain steady, sure, and ever-present—even evergreen! But the possibilities to share with others about His provision for an eternal relationship with Him won't always be available. Like the turning season, opportunities often pass, blowing in the wind the regrets of missed moments.

For those who know the Lord, fall isn't the announcement of a gray future. It's the signal that time is passing and that we have limited moments to touch lives. Thanksgiving celebrations provide the perfect setting to offer thanks to our Lord—to pause, to praise, to count our blessings—and to share His goodness with those around our table.

Jayme Durant
EXECUTIVE EDITOR



Unlocking the Times

HENRY M. MORRIS III, D.MIN.

Dwight Eisenhower was reported to have said, “Hindsight is always more accurate than foresight, but foresight is far more valuable.”

During the time that David was beginning to be recognized as king in Israel, the men of Issachar were reputed to have an unusual gift for grasping the significance of what was happening around the nation, providing the leaders of their tribe with success in much of what was needed during that era (1 Chronicles 12:32). Every Christian leader prays for such wisdom and insight—most certainly as they try to determine what the Lord of the Kingdom would impute as a strategic vision that will guide the ministry they hold in trust for the Kingdom. Christian leadership is a far-reaching responsibility.

Fortunately, we live in an era and in a country where broad-based social and demographic data are available to any who would take the time to look them up. The challenge is to understand what to do with the information—how to “unlock the times.”

The Pew Research Center has become one of the more widely known and statistically accurate information sources, covering a wide variety of data over the past decade that provide a clearer picture of perspectives than one might glean from the typical media and political pundits. Here are a few significant data points that are worth considering.

The Pew Research Center’s Global Attitudes survey conducted nearly 400,000 interviews in 63 countries. 78% of those surveyed said that it is “unacceptable” to have extramarital affairs. 62% found gambling unacceptable, 59% rejected homosexuality, and 56% found abortion unacceptable.¹ These are *world* opinions, not religious or evangelical thoughts.

Romans 2:14-15 makes it clear that “Gentiles, who do not have the law, by nature do the things in the law, these, although not having the law, are a law to themselves, who show the work of the law written in their hearts, their conscience also

bearing witness, and between themselves their thoughts accusing or else excusing them.”

One would not get those impressions from the news channels or the movies.

The Millennials remain the most conflicted, opinionated, optimistic, unsure, and unreached demographic in our lifetimes.

Earlier in 2014, the Pew Research Center conducted a survey of 3,243 American adults on parenting responsibilities. One would glean from popular media that all of the old traditional values have long since been purged from society, but there was widespread agreement among parents about the traits that children should be taught. 94% (!) insist that it is important to teach children *responsibility*. “Hard work” was insisted on by 92%, and 91% demanded that “being well-mannered” was critical for teenagers. And although incorporating “religious faith” was only deemed important for 56% of respondents, some 31% insisted that passing on religious faith was the *most* important responsibility of a parent—making teaching religious faith the third-most important trait behind responsibility and hard work.²

One wonders if the misconceptions fostered by the media have not generated an effort on the part of the evangelical world to succumb to unreal expectations. Maybe the young folks in our world are *still* reachable

with biblical truth.

There is ambivalence in young people.

Even though a solid majority of Millennials (18–33 years old) believe in God (86%), the percentage plummets to only 58% who say that they are “absolutely certain” that God exists. Historical trends suggest, however, that the young adults will develop a stronger faith in God over the remaining course of their lives. Right now, however, some 29% say that they are not affiliated with any religion—the highest level of disaffiliation recorded for any generation.³

These young folks are the most racially diverse in American history—43% are non-white. Millennials possess very low levels of trust in other people (19%). Even so, they are more upbeat than older folks, with 49% expecting that the best years of our country are still ahead—in spite of the fact that this age group ranks highest in student loan debt, poverty, and unemployment, with lower levels of wealth and personal income than their predecessor generations, even though “they are the best-educated cohort of young adults in American history.”⁴



The Millennials remain the most conflicted, opinionated, optimistic, unsure, and unreached demographic in our lifetimes. They are “forging a distinctive path into adulthood....relatively unattached to organized politics and religion, linked by social media, burdened by debt, distrustful of people, in no rush to marry—and [yet]





optimistic about the future.”²⁵

ICR feels a strong obligation to reach this age group because they will soon be national and world leaders.

The successful launch of our *Unlocking the Mysteries of Genesis* DVD series has strengthened our resolve to do more to touch this group. We have received numerous unsolicited notes of thanks and praise from every facet of our ministry. Churches, Christian schools, homeschool families, Bible study groups, and individuals from every age group all across our ministry have verified that the stunning visual and informational quality of this 12-episode series is accomplishing much in the lives of those who have seen it.

If you have not yet purchased a set, please consider doing so—if not for your own edification, then possibly for the ministry you have with others in your family, church, or study group. You will not be disappointed.

ICR’s seminars and articles and books will continue. Our schedule is packed, and the Lord continues to open doors across the nation and in other countries. These videos, however, are a way to reach out far beyond the physical presence of our key science faculty. There are tens of thousands of evan-

gelical churches, many more home Bible studies, and multiple thousands of homeschool families and Christian schools that we will never have the opportunity to reach directly. But we can provide excellent teaching materials they can use themselves.

ICR has just released the companion *Unlocking the Mysteries of Genesis Student Guide* reinforcing the evidence presented in the series for homeschool and Christian school students. Initial interest in this *Student Guide* continues to verify that these types of materials are meeting a major need in the Christian community.

But *Unlocking the Mysteries of Genesis* is only the beginning of this effort. Already we are receiving requests for more material and expanded subjects that can be

***Unlocking the Mysteries of Genesis* is only the beginning of this effort. Already we are receiving requests for more material and expanded subjects that can be used to reach the minds and hearts of the next generation.**

used to reach the minds and hearts of the next generation. ICR is in the early stages of planning for the next DVD series—most probably one on the marvels of the human body.

Acts & Facts readers will be familiar with Dr. Randy Guliuzza’s articles, and many of you have read his books, *Made in His Image: Examining the complexities of the human body* and *Clearly Seen: Constructing Solid Arguments for Design*. His extensive knowledge as both an engineer and a medical doctor provides a unique perspective on the precise design features of the human body, the stunning display of God’s personal handiwork to fashion His “image” and His

“likeness.” What a wonderful opportunity to honor our Creator!

But we need your help us if these videos are to be made.

Unlocking the Mysteries of Genesis involved nearly two years of ICR’s senior staff time, nearly \$2 million in direct costs to develop, and an additional \$300,000 to promote and produce. Were it not for faithful support and generous help, these videos would not be ministering to the thousands that they are currently reaching. If we are to generate more quality episodes like this, our Lord must impress that need on the hearts of some special donors to share their resources with us.

We are convinced that the need is real and enormous, but we cannot divert our normal activities for the sake of a special project for broader potential. If the same level of professional quality is to be achieved, even four new episodes will require in excess of \$500,000. As faithful stewards ICR has never gone in debt for anything—we are firmly convicted that our operations must be in sync with the funds available and, therefore, in sync with the Lord’s will for the present processes and products.

Please pray about these future possibilities with us—help us unlock the times! If God has granted you resources to invest in His Kingdom, consider partnering with ICR to reach the young adults who will soon be leading our churches and our world. ●

References

1. Caumont, A. 10 big questions the Pew Research Center has tackled in the past decade. Pew Research Center. Posted on pewresearch.org September 16, 2014.
2. Parker, K. Families may differ, but they share common values on parenting. Pew Research Center. Posted on pewresearch.org September 18, 2014.
3. Millennials in Adulthood. Pew Research Center. Posted on pewresearch.org March 7, 2014.
4. Ibid.
5. Ibid.

Dr. Morris is Chief Executive Officer of the Institute for Creation Research.



▶ NOVEMBER 6-7

Orlando, FL
FLOCS National Educators
Conference 2014
(J. Johnson) 863.583.0528

▶ NOVEMBER 9

Winter Haven, FL
Faith Baptist Church
(J. Johnson) 863.293.0689

▶ NOVEMBER 16

Dallas, TX
New Life Bible Fellowship
(F. Sherwin) 214.331.5459

▶ NOVEMBER 7-8

Johnson City, TN
BE READY! Conference at First
Christian Church
(H. Morris III) 423.232.5700

▶ NOVEMBER 9

Boston, MA
Calvary Chapel in the City
(N. Jeanson) 617.602.3281

▶ NOVEMBER 23

Dallas, TX
New Life Bible Fellowship
(J. Hebert) 214.331.5459

▶ NOVEMBER 9

Clinton, TN
Second Baptist Church
(H. Morris III) 865.457.2046

▶ NOVEMBER 15

Santa Clarita, CA
Bible Science Association of
Los Angeles, CA
(F. Sherwin) 661.755.9148

For more information on these events or
to schedule an event, please contact the
ICR Events Department at **800.337.0375**,
visit www.icr.org/events, or email us at
events@icr.org

BE READY! CONFERENCE

*Preparing God's people to share
the hope that's within them.*

November 7-8, 2014
First Christian Church
Johnson City, Tennessee



"But sanctify the Lord God in your hearts, and always *be ready to give* a defense to everyone who asks you a reason for the hope that is in you, with meekness and fear."

1 PETER 3:15

FEATURED SPEAKERS



Dr. David Reagan
Lamb & Lion Ministries,
Founder



James Walker
Watchman Fellowship,
President



Dr. Henry Morris III
Institute for Creation
Research, CEO

FEATURED ARTIST



Marty Goetz

For more information, please call First Christian Church at 423.232.5700



BioOrigins Project Update

Purpose, Progress, and Promise

Part 2

In last month's article, I described the purpose of ICR's life sciences research and sketched out the need for a counter-offensive strategy against evolution's lines of scientific arguments. This month I describe the scope of this counter-offensive.

To reclaim the scientific throne from Darwin, creationists must not only identify the flaws in his explanation, they also need to replace his ideas with scientifically superior ones. Unfortunately, in the intense battle over the details of Darwin's claims, it's not always clear precisely which scientific questions need answering. For example, if Darwin's assertion of "transitional forms" was incorrect, then what was the initial scientific question he was trying to answer with this claim?

The title of Darwin's book identifies the big scientific and biological enigma that remains unsolved to this day: *On the Origin of Species*. In this work, Darwin offered a simple but comprehensive explanation for this puzzle. He addressed 1) *where* species originated (Darwin's answer: in a single location), 2) *how* species originated (answer: via natural selection), 3) *why* species originated (answer: changes in environmental challenges), 4) *when* species originated (answer: slowly over long eons), 5) *from whom* species originated (answer: ultimately, one or a few common ancestors), and 6) *why* species go *extinct* (answer: survival of the fittest). The more familiar lines of evolutionary evidence (transitional forms, homology, vestigial organs, biogeography) are all pieces of this bigger puzzle.

Hence, any creationist explanation

that rejects the evolutionary evidence without answering these bigger biological questions misses half the battle. For example, when a creationist demonstrates that most of the organs that were historically labeled *vestigial* (i.e., evolutionary "leftovers") are, in fact, functional, this effectively undermines a key piece of evolutionary evidence, but it, by itself, does not answer the process by which species arise and go extinct. In addition, when creationists show that *homology* (repetition of the same biological structure in diverse species) is a hallmark of design, they simultaneously rebut an evolutionary argument and provide positive evidence for design, but they don't answer the question of whether modern species are modified forms or exact replicates of the original *kinds* that God created during the creation week.

Much more creationist research is needed before the origin of species puzzle is solved and Darwin's ideas are effectively displaced. For example, as we have described previously,^{1,2} the text of Genesis 1–11 does not teach the fixity of species. Rather, Genesis teaches that modern species are descendants of the original kinds God created, and these kinds correspond—in many cases—to the modern classification level of *family*, not *species* or even *genus*. Since Noah was commanded to take only two (unclean animals) or seven (clean animals) of each land-dwelling, air-breathing kind on board the Ark, and since many families have more than seven species, it is clear that many species have formed since the Flood and probably since creation.

Furthermore, Genesis also does not

teach species' geographical fixity. While Scripture does not specify the original geographical locations of the kinds God created, Genesis 6–9 makes it clear that the kinds on board the Ark disembarked around Ararat and then migrated to their present locations. Hence, all the questions that Darwin sought to answer apply equally well to creation science: where, how, why, when, and from whom species originate—as well as why they go extinct. Answering these questions with testable, accurate scientific explanations drives most of the current life sciences research efforts at ICR.

The scope of these six research questions is huge—almost intimidating. Why take on such a colossal task with such a small research team? Two observations argue that a comprehensive creationist explanation is a matter of when (not *if*) the explanation will be found. First, since we've grounded our research on the foundation of Scripture, we know that we'll avoid a lot of pitfalls that hamper secular efforts whose scientific assumptions clearly contradict Genesis and are, therefore, in error. Second, to our surprise, we've made much progress in the last few years. We'll tell you more about these results in subsequent installments of this series. ●

References

1. Jeanson, N. 2013. Is Evolution an Observable Fact? *Acts & Facts*. 42 (1): 20.
2. Jeanson, N. 2013. The Origin of Species: Did Darwin Get it Right? In *Creation Basics & Beyond: An In-depth Look at Science, Origins, and Evolution*. Dallas, TX: Institute for Creation Research, 125-131.

Dr. Jeanson is Deputy Director for Life Sciences Research and received his Ph.D. in Cell and Developmental Biology from Harvard University.



THE ICONIC ISOCHRON

RADIOACTIVE DATING PART 2

V E R N O N R . C U P P S , P H . D .



The Bible is quite clear about the origin and timeframe for the creation of Earth and the cosmos. If Scripture is inaccurate in this, then how can it be trusted in anything else? Some evolutionists throw out theistic evolution (God using evolution as His creative process) as a philosophical panacea, with the goal of leading people to conclude that Genesis is a myth. Like Nimrod of ancient times, they know they must provide an alternative (i.e., naturalism, specifically *scientism*—the belief that science alone can render truth about our world and

reality) to biblical truth if they are to hold sway over the public in what is essentially a couched rebellion against God.

One of the indirect evidences that evolutionists universally appeal to is radioactive dating because it appears to supply the deep time their evolutionary models demand. But how accurate is their model, and how scientific is their approach?

In this article we'll look at isochron dating. An isochron is a line on an isotope ratio diagram denoting rock samples. The slope of the line is related to the age of the samples.

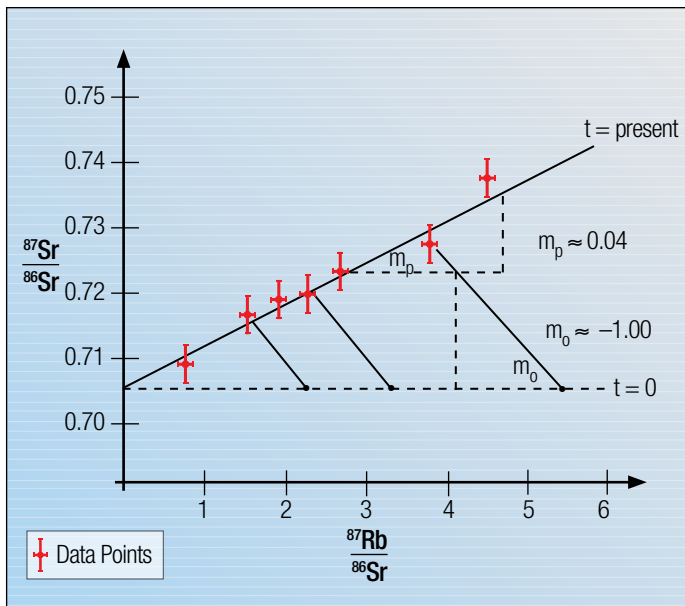


Figure 1. Example of a Rubidium-Strontium Isochron

The simplest way to think of it is this: Some rock materials (isotopes) decay, and we can determine the age of a rock in today's laboratories by determining how much of a specific isotope contained in the rock has decayed. Both the decaying isotope and the isotope it produces (its daughter) can be compared to an isotope of the daughter's elemental family that does not decay. These two ratios, when plotted on a graph for many different samples from a rock suite, should hypothetically produce a straight line under certain assumed conditions. The Y-intercept of that line will then provide the initial ratio of the daughter isotopes at the time the rock suite formed, and the slope (m) will provide the age of the rock suite.

Note: The equations may be daunting, especially to the layman, so we've placed them in sidebars. Hang in there—read the narrative and we'll get to the answer we're looking for.

SIDEBAR A

Early in the process of dating rocks using clocks based on radioactivity, the basic equation describing radioactive decay was used in a straightforward way.

$$N = N_0 e^{-\lambda(t_f - t_a)}$$

where: N ^{def} Measured number of parent atoms at time of measurement (t_f)
 N_0 ^{def} Number of parent atoms present at time of formation (t_a)
 λ ^{def} Decay constant for the parent nucleus
 $(t_f - t_a)$ ^{def} The age of the material containing the initial parent nuclei (t_a)

In order to obtain an age for the material containing the parent nuclei, we can, in principle, simply solve the above equation for t_a and insert the appropriate numerical values for N , N_0 , and λ . Thus:

$$t_a = \frac{1}{\lambda} \ln \frac{N_0}{N}$$

To find out how much material began the decay process long ago, we need to determine N_0 , the number of parent atoms present when the rock was formed. But this presents a problem for any given material since no one can go back in time and measure that number. Decay constants for radioisotopes typically used in deep-time dating range from $0.0654 \times 10^{-10} \text{ yr}^{-1}$ for ^{147}Sm to $9.85 \times 10^{-10} \text{ yr}^{-1}$ for ^{235}U .

So the equation in sidebar A *guarantees* deep time at today's decay rates, unless N (the number of parent atoms now) and N_0 are very close in magnitude. At this point the *closed system assumption* was introduced and secularists assumed that all, or most, of the daughter nuclei present in a given material were there as a direct result of the parent's decay. One can then estimate N_0 by setting it equal to the number of daughter nuclei plus the number of parent nuclei present at the current time, assuming no daughter nuclei were present at the beginning of the decay sequence. (See sidebar B.)

SIDEBAR B

$$N_0 = \xi D + N$$

where: ξ ^{def} Branching ratio for the decay mode of the parent nucleus producing the daughter nucleus { $0 < \xi \leq 1$ }
 D ^{def} Number of daughter nuclei at the current time, t_f
 N ^{def} Number of parent nuclei at the current time, t_f

Of course, one can never be sure that all the daughter nuclei came from the radioactive decay of the parent because the assumption of a closed system on or near Earth's crust for millions of years stretches credibility. Thus, geochronologists need a more reliable method of dating materials than the straightforward accumulation radioactive decay clock.

The better dating method is called the *isochron method* of radioactive dating. This approach theoretically bypasses the issue of unknown initial conditions for isotope concentrations by combining a linear equation analysis with a nonlinear equation to simulate time evolution of isotopes in rock.

The key new concept introduced in this dating method is this: Researchers seek to develop a ratio of the parent and daughter nuclei to a stable non-radiogenic nucleus of the daughter's elemental family.

In implementing this approach, scientists assumed that the initial ratio of daughter nuclei will remain the same throughout the rock matrix where there are no parent nuclei—i.e., from the time of solidification until the present time, all daughter nuclei are produced *only* by decay of the parent nuclei in the sample being analyzed.

This initial ratio can be quantified by graphing the ratio of the daughter nuclei versus the ratio of the parent nuclei to the non-radiogenic daughter nuclei for chemically different parts of a rock sample on an XY plot and extending the resulting straight line to the Y-intercept where there are zero parent nuclei. This assumes there has been no migration of daughter or parent nuclei within the matrix since its solidification. It also assumes that the daughter isotopes had sufficient time to uniformly distribute themselves throughout the

SIDEBAR C

The isochron method for radioactive dating can be derived using straightforward mathematics. We start with the basic equation describing radioactive decay, i.e.:

$$P = P_0 e^{-\lambda t_a}$$

- where: P def Amount of parent currently in material matrix
- P_0 def Amount of parent in material matrix when it solidified
- t_a def Age of the material matrix
- λ def Decay constant of the parent nuclei

As we previously observed, this is a single equation with two unknowns when we assume that the decay constant is truly constant in time. (Note: A constant decay rate is a uniformitarian assumption. If the decay rate is actually variable, there will be three unknowns!) It cannot be solved for t_a unless P_0 is known. We can now further define:

- D_i def Amount of non-radiogenic daughter in material matrix when it solidified
- D_0 def Amount of radiogenic daughter in material matrix when it solidified
- D_a def Amount of daughter added to material matrix by radioactive decay
- P_r def Amount of parent which has decayed since solidification

The closed-system assumption can now be mathematically expressed as:

$$\begin{aligned} P_r &= D_a \\ D_a &= D - D_0 \\ P_r &= P_0 - P \end{aligned}$$

Applying the transitive property of mathematics, we have:

$$P_0 - P = D - D_0$$

Adding P to both sides of the equation:

$$P_0 = D - D_0 + P$$

Substituting for P_0 :

$$P * e^{+\lambda t_a} = D - D_0 + P$$

Rearranging, we obtain the general isochron model radioactive dating equation:

$$D = D_0 + P (e^{+\lambda t_a} - 1)$$

Divide both sides of the equation by the index isotope, D_i :

$$\frac{D}{D_i} = \frac{D_0}{D_i} + \frac{P}{D_i} (e^{+\lambda t_a} - 1)$$

This equation is in the form of a time-evolving linear equation with a time-dependent slope and the Y-intercept given by $\frac{D_0}{D_i}$.

Since both the daughter (D and D_0) and index (D_i) isotopes belong to the same elemental family, they should evenly distribute themselves throughout the rock matrix they occupy at the same ratio during solidification or crystallization. Different concentrations of the daughter isotopes represent areas of the material with different chemical potentials for assimilating them, such as imbedded minerals that solidify at higher temperatures.

Now if it is assumed that this chemical assimilation process proceeds in a linear fashion, then one can plot a straight line of $\frac{P}{D_i}$ (x) vs. $\frac{D}{D_i}$ (y) and obtain the slope: $m = e^{+\lambda t_a} - 1$ and Y-intercept $\frac{D_0}{D_i}$. Under the closed system assumption, the time elapsed from the solidification/crystallization of the material matrix to the present is given by:

$$t_a = \frac{1}{\lambda} \ln(m + 1)$$

This, then, is the general method by which radioisotope decay is used to obtain ages for various suitable material matrices. Note that this method guarantees long ages because the $\frac{1}{\lambda}$ term is much greater than the \ln term when long-lived radioisotopes are used. As illustrated in Figure 1, this method involves a time-dependent straight line that begins with a slope of 0 at time t_0 and slowly evolves into a straight line with a non-zero slope at the present time t_i .

material matrix; i.e., crystallization cannot be too rapid. This second assumption is the *homogeneity assumption*. Forming an isotope ratio also has the practical advantage in that most instruments used to quantify isotopes are more accurate in determining ratios than absolute values. (See sidebar C.)

If the mathematics in this age equation are sound, why would any rational person question the model the equation represents? Models are essentially the modern equivalent of a hypothesis and are subject to the criteria for evaluating any scientific hypothesis. Do the isochron results or predictions match observation and experimental data? Do the assumptions that constitute essential elements of the model make rational sense? If the answer to either of these questions is no, then scientists must reject the model and generate a new one.

First, let's take a hard look at the critical assumptions of the isochron model. The three basic assumptions are:

The various isotope combinations used in the isochron method of dating are clearly discordant—they do not produce the same age for a given rock formation.

- 1) The solid material matrix *must* remain a closed system from the time of formation to the present time;
- 2) The initial amount of the daughter isotope is known; and
- 3) The decay has occurred at a constant rate over time.

A fourth and more subtle assumption—homogeneity—assumes that the daughter isotopes distribute themselves evenly throughout the solid rock matrix as it solidifies but the parent nuclei do not.

First assumption issue: That a solid material matrix near the surface of the earth would remain a closed system over millions of years strains plausibility. Hydrothermal activity,¹

ionic transport, partial melting, and nuclear reactions resulting from cosmic ray bombardment are all factors that could change elemental distributions in a rock formation over time.

Second assumption issue: The isochron model was created to solve the “known daughter isotope” assumption, but does it? In order

for the initial amount of the daughter isotopes to be known, the isotopes have to be uniformly distributed throughout a rock formation when it solidifies, and it must solidify slowly enough for this uniformity to occur. If molten material passes through solid rock, partially liquefying it, then a mixing of two rock formations occurs. Currently, there is not a definitive way to tell the difference between a mixing line and an isochron line.² Therefore, one must assume that the isochron line began with a slope of zero much like the earlier methods of assuming initial parent or daughter concentrations.

Third assumption issue: As pointed out in the first article of this series, recent experimental evidence throws the absolute constancy of the radioactive decay constant into serious question. Under conditions that possibly existed during the great Flood, it would not be unreasonable to hypothesize that the radioactive decay rates were accelerated enough to produce evidence of great age in Earth's rock formations, especially those of igneous or metamorphic origins.³

Homogeneity assumption issue: Finally, there is the intractable problem of the homogeneity assumption conflicting with the necessity that the isochron generate several independent equations in order to establish a linear relationship in both the present and past. If the daughter isotopes are uniformly distributed throughout the rock formation during cooling, then the parent isotope should also be uniformly distributed in the non-mineral "whole rock" parts of the rock. The vast majority of isochrons reported in the literature are

Rocks gathered from recently erupted Mt. Ngauruhoe in New Zealand gave dates of between 270,000 years and 3.9 billion years—all this from rocks known to be less than 60 years old!

of the whole rock variety, yet only the individual mineral isochrons are internally consistent with this particular assumption. Fractionation⁴—i.e., separation of isotopes by purely physical processes during cooling—presents significant problems for the homogeneity assumption of isochron-model dating, particularly for the K-Ar, Rb-Sr, and the U-Pb based methods.

So how do the actual data compare with the model results? First, the various isotope combinations used in the isochron method of dating are clearly discordant—they do not produce the same age for a given rock formation.⁵ Second, the isochron method gives erroneous ages for rock

formations of known age.⁶ Specifically, rocks gathered from recently erupted Mt. Ngauruhoe in New Zealand gave a K-Ar date of 270,000 to 3.5 million years, a Rb-Sr date of over 133 million years, a Sm-Nd date of nearly 200 million years, and Pb-Pb dates of 3.9 billion years—all this from rocks known to be less than 60 years old!

Another example involves lavas from the Virunga Toro-Ankole regions of the east African Rift Valleys.⁷ Lavas from these rift valleys known to be Pliocene (≤ 5 million years) or younger give a Rb-Sr isochron model age of 773 million years. Igneous rocks on the rim of the Grand Canyon give dates older than the igneous rocks at the bottom, contrary to their stratigraphic placement.⁸ Clearly, the model does not reliably reproduce the observational data and therefore must be modified or used with appropriate caveats.

In the end, the isochron model for radioactive dating is only a hypothesis and a rather poor one at that. Models, no matter how elegant their mathematics, are only as good as the assumptions that go into them and how well they reproduce reality through observation and experimental data.

Conclusion: The scientific method simply does not allow isochron-model dating to be presented as scientific fact. Back to the drawing board. ●

References

1. Komarneni, S. and W. B. White. 1983. Hydrothermal Reactions of Strontium and Transuranic Simulator Elements with Clay Minerals, Zeolites, and Shales. *Clays and Clay Minerals*. 31 (2): 113-121.
2. Faure, G. 1986. *Principles of Isotope Geology*, 2nd ed. New York: John Wiley & Sons, 147.
3. Snelling, A. 2005. Radiohalos in Granites: Evidence for Accelerated Nuclear Decay. In *Radioisotopes and the Age of the Earth: Results of a Young-Earth Creationist Research Initiative*. Vardiman, L., A. Snelling, and E. Chaffin, eds. El Cajon, CA: Institute for Creation Research, 101-151.
4. Faure, *Principles of Isotope Geology*, 7.
5. Snelling, Isochron Discordances and the Role of Inheritance and Mixing of Radioisotopes in the Mantle and Crust, *Radioisotopes and the Age of the Earth*, 393-509.
6. Morris, J. 2007. *The Young Earth*. Green Forest, AR: Master Books, 52.
7. Faure, *Principles of Isotope Geology*, 146-147.
8. Morris, J. 2007. *The Young Earth*, 58-59.

Dr. Cupps is Research Associate at the Institute for Creation Research and received his Ph.D. in nuclear physics from Indiana University-Bloomington.



Image Credit: Indiana University. Adapted for use in accordance with federal copyright (fair use doctrine) law. Usage by ICR does not imply endorsement of copyright holder.



A cross-section block of granite with visibly imbedded crystals. The first crystals to solidify are the biotite hornblende in the dark areas. Potassium feldspar, the light tan-pink areas, crystallize next. Finally the quartz crystals solidify, in light gray. The rest of the rock is an amalgam known as "whole rock."

Lungfish Design Is Walking Tall

The Lord Jesus unleashed His creativity when He designed fish. Some have numerous bones, others none. Many are streamlined, but a few are shaped like...well, rocks. Some even survive out of water. Flying fish glide on wave-top air currents far out at sea. Perhaps the wackiest fish are those that can live on land and breathe air. Each of these different and remarkable body designs showcases creation.

God equipped fish with different air-exchanging tactics. For example, the bowfin (a.k.a. “dogfish”) can live out of water for a long time by swallowing air into its swim bladder. But it uses gills, not lungs.

Three kinds of fish actually have lungs: gar, lungfish, and bichirs. Gar and lungfish breathe air with alveolar lungs like those of mammals and reptiles—lungs that exchange gases in tiny sacs called *alveoli*. Australian lungfish are unique and look like fossil lungfish from Devonian rocks, showing that no evolution occurred in the past 400 million supposed years. They have gills and one lung, which they only use when stressed.

South American lungfish look like African lungfish. These species probably descended from the same created lungfish kind and migrated toward their current habitats during or after the Flood. They need their small gills to release carbon dioxide, but they also need their lungs to acquire enough oxygen. With this unique design, how could lungfish have evolved? If their ancestor had no gills, it might have asphyxiated. But if it had not yet evolved lungs, how would it get oxygen?

Perhaps the Lord outfitted the first lungfish to thrive in shallow, oxygen-deprived waters, using this clever combination of gills and lungs. Or He could have built into the original lungfish the genetic potential to generate offspring that had both organs—an amazing technical feat. Try designing a machine that can refine certain components each time it copies itself!

New evidence shows that fish can refine their body parts within a single generation. Bichirs are African fish with non-alveolar lungs. Researchers recently raised 111 bichirs ranging from two-month-olds to adults in a terrarium.¹ They kept others of the same age in

an aquarium. The land-dwelling bichirs’ pectoral girdles—the bones just behind their heads—grew in proportions that enabled the fish to swing their heads farther from side to side when they awkwardly waggled on their front fins and flopped their long bellies behind. Their front fins also grew more directly below the chest, so as they propelled themselves along they slipped less often than their water-raised counterparts did when they tried to “walk.”

In the aquarium, bichir pectoral girdles were thicker, so they couldn’t waddle as efficiently—though they probably swam better.

The evolutionists conducting the study speculated that these changes help explain how an ancient finned fish supposedly transformed into a leggy amphibian. Was it evolution or awesome design that changed the bichirs? Machines don’t alter their own components without being designed to do so.

As the juvenile bichirs grew up on land, tiny sensors probably detected stresses placed on their bones. Other cellular systems

would interpret those inputs and send appropriate signals to bone-growth cells that deposited bone tissue into a more waddle-friendly arrangement.²

The *Nature* study authors who described their bichirs had to essentially ignore the extraordinary design behind these fish features when they hypothesized that the bichir changes they saw “may also facilitate macroevolutionary change.”¹ What does a protocol that refines an *existing* structure have to do with the *origin* of such structures and protocols? Macroevolution requires nature to invent brand new body parts—something not yet demonstrated in nature or a laboratory. Optimizing a complicated support structure *while it’s still in use* clearly points to high-tech design—just the kind of features one would expect from a Creator who “created great sea creatures and every living thing that moves, with which the waters abounded, according to their kind.”²³ ●

References

1. Standen, E. M., T. Y. Du, and H. C. E. Larsson. 2014. Developmental plasticity and the origin of tetrapods. *Nature*. 513 (7516): 54-58.
2. Similarly, the bones of a tennis player’s racket arm are much thicker than her other arm due to stress-detecting and bone growth designs.
3. Genesis 1:21a.

Mr. Thomas is Science Writer at the Institute for Creation Research.



New evidence shows that fish can refine their body parts within a single generation.



Traditions of a Global Flood

*Where is the wise? Where is the scribe?
Where is the disputer of this age? Has not
God made foolish the wisdom of this world?*
(1 CORINTHIANS 1:20)



One of the strongest evidences for the global Flood that annihilated all people on Earth except for Noah and his family has been the presence of flood legends in the folklore of people groups from around the world. And the stories are all so similar. Local geography and cultural aspects may be present, but they all seem to be telling the same story.

Over the years I have collected more than 200 of these stories, originally reported by various missionaries, anthropologists, and ethnologists. While the differences are not always trivial, the common essence of the stories is instructive as compiled below.

1. Was there a favored family? 88%
2. Were they forewarned? 66%
3. Was the flood due to the wickedness of man? 66%
4. Was the catastrophe only a flood? 95%
5. Was the flood global? 95%
6. Was survival due to a boat? 70%
7. Were animals also saved? 67%
8. Did animals play any part? 73%
9. Did survivors land on a mountain? 57%
10. Was the geography local? 82%
11. Were birds sent out? 35%

12. Was the rainbow mentioned? 7%
13. Did survivors offer a sacrifice? 13%
14. Were specifically eight persons saved? 9%

Putting them all back together, the story would read something like this:

Once there was a worldwide flood sent by God to judge the wickedness of man. But there was one righteous family that was forewarned of the coming flood. They built a boat on which they survived the flood along with the animals. As the flood ended, their boat landed on a high mountain, and they descended and repopulated the whole earth.

Of course, the story sounds much like the biblical story of the great Flood of Noah's day. The most similar accounts are typically from Middle Eastern cultures, but surprisingly similar legends are found in South America, the Pacific Islands, and elsewhere. None of these stories contains the beauty, clarity, and believable detail given in the Bible, but each is meaningful to its own culture.

Anthropologists will tell you that a myth is often the faded memory of a real event. Details may have been added, lost, or obscured in the telling and retelling, but the central kernel of truth remains. When two

separate cultures have the same "myth" in their body of folklore, their ancestors must have either experienced the same event or they both descended from a common ancestral source that itself experienced the event.

The only credible way to understand the widespread, similar flood legends is to recognize that all people living today—even though separated geographically, linguistically, and culturally—have descended from the few real people who survived a real global flood on a real boat that eventually landed on a real mountain. Their descendants now fill the globe, never to forget the real event.

But, of course, this is not the view of most modern scholars. They prefer to believe that something in our commonly evolved psyche somehow forces each culture to invent the same imaginary flood legend with no basis in real history. Instead of scholarship, this is "willful ignorance" of the fact that "the world that then existed perished, being flooded with water" (2 Peter 3:5-6). ●

Adapted from Dr. John Morris' article "Why Does Nearly Every Culture Have a Tradition of a Global Flood?" in the September 2001 edition of *Acts & Facts*.

Dr. Morris is President of the Institute for Creation Research and received his Ph.D. in Geological Engineering from the University of Oklahoma.



Genetic Entropy Points to a Young Creation

Many creationists believe that the bulk of scientific evidence for a recent creation comes from the fields of geology, physics, and astronomy and that biology and genetics have little to contribute. However, data that confirm a young creation are rapidly emerging from genetic studies performed by both creationist and secular scientists.

One of the most important finds in recent years came from modeling the accumulation of mutations (genetic code errors) in the human genome over time using computer simulations. Researchers found that this buildup of mutations can only reach a certain level before the genome completely deteriorates and humans go extinct. This process of degradation, called *genetic entropy*, fits perfectly with a recent creation of six to ten thousand years ago.^{1,2}

Two recent research studies performed by secular scientists support genetic entropy. Their data were based on rare single-nucleotide variation observed in the protein-coding regions of the human genome. Over 80% of this variation was associated with genetic entropy exhibited by heritable diseases.³⁻⁷ Because protein-coding regions are less tolerant of mutation than other parts of the genome, these regions give more reliable historical genetic information.

When scientists typically evaluate human genetic history, they incorporate *hypothetical* deep-time scales taken from evolutionary paleontology to calibrate their models of DNA change over time. In other words, they assume millions of years and literally build deep time into their models. In contrast, these new studies use demographic models of human populations over known historical time and geographical space. The resulting data showed a very recent, massive burst of human genetic diversification—mostly associated with genetic entropy. One author stated, “The maximum likelihood time for accelerated growth was 5,115 years ago.”⁵ This places the beginning of the period of genetic decline close to the Genesis Flood, when the earth began its repopulation through Noah’s family and humans rapidly diversified (Figure 1).⁸

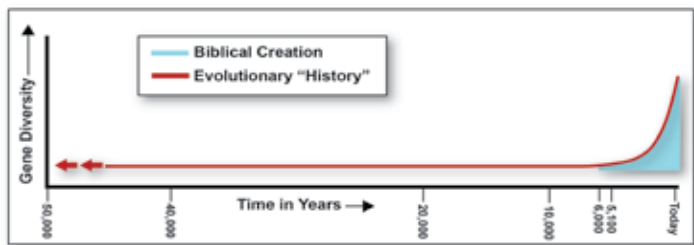


Figure 1. Human genetic population data confirm recent human diversification, shown in blue. The same data confront human evolution’s imagined history, shown in red.

Amazingly, this recent explosion of human genome variation, mostly associated with genetic entropy, also fits the same pattern of human life expectancy rapidly declining after the Flood as recorded in the Bible (Figure 2).²

One more key piece of genetic data demonstrating a recent creation comes from ICR scientist Dr. Nathaniel Jeanson, who examined

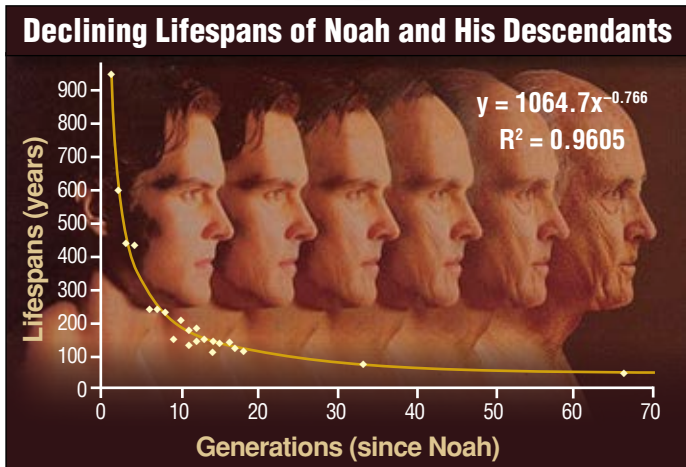


Figure 2. After the Flood, human lifespans quickly began to decline. Image data credit: Sanford, Pamplin, and Rupe, “Genetic Entropy Recorded in the Bible?”²

the mutation rates of DNA in the cell’s mitochondria. The mitochondria is a small organelle that resides outside the cell’s nucleus. Mitochondria contains its own DNA molecule separate from a creature’s main genome. Mitochondrial DNA is typically inherited from the creature’s mother, and its mutation rates can accurately be measured to produce a molecular-genetic clock. By comparing rates in a few very different animals, Dr. Jeanson demonstrated that a creation of not more than 10,000 years ago is confirmed by these genetic clocks.^{9,10}

The results of these genetic studies fit perfectly with the predictions of a young-earth creation timeframe but make no sense when millions of years are added to the mix—the clocks simply cannot have been ticking that long.

In the case of humans, Adam and Eve were originally created with perfect, error-free genomes—no mutations present. Then sin entered the world, and the whole creation became cursed. The human genome has essentially been on a downhill slide ever since. We are not gradually evolving better genomes. Instead, the recently measured degradation patterns and rates clearly match the biblical model and timeframe. ●

References

- Sanford, J. C. 2008. *Genetic Entropy and the Mystery of the Genome*, 3rd ed. Waterloo, NY: FMS Publications.
- Sanford, J., J. Pamplin, and C. Rupe. 2014. Genetic Entropy Recorded in the Bible? FMS Foundation. Posted on kolbecenter.org July 25, 2014, accessed July 25, 2014.
- Tomkins, J. Genetics Research Confirms Biblical Timeline. *Creation News Update*. Posted on icr.org January 9, 2013, accessed July 25, 2014.
- Tomkins, J. Human DNA Variation Linked to Biblical Event Timeline. *Creation Science Update*. Posted on icr.org July 23, 2012, accessed December 31, 2012.
- Tennesen, J. A. et al. 2012. Evolution and Functional Impact of Rare Coding Variation from Deep Sequencing of Human Exomes. *Science*. 337 (6090): 64-69.
- Fu, W. et al. 2013. Analysis of 6,515 exomes reveals the recent origin of most human protein-coding variants. *Nature*. 493 (7431): 216-220.
- Keinan, A and A. G. Clark. 2012. Recent Explosive Human Population Growth Has Resulted in an Excess of Rare Genetic Variants. *Science*. 336 (6082): 740-743.
- Thomas, B. 2012. A Recent Explosion of Human Diversity. *Acts & Facts*. 41 (9): 17.
- Jeanson, N. T. 2014. New Discoveries from 2,700 Species Comparisons. *Acts & Facts*. 43 (2): 9.
- Jeanson, N. T. 2013. Recent, Functionally Diverse Origin for Mitochondrial Genes from ~2700 Metazoan Species. *Answers Research Journal*. 6: 467-501.



Dr. Tomkins is Research Associate at the Institute for Creation Research and received his Ph.D. in genetics from Clemson University.

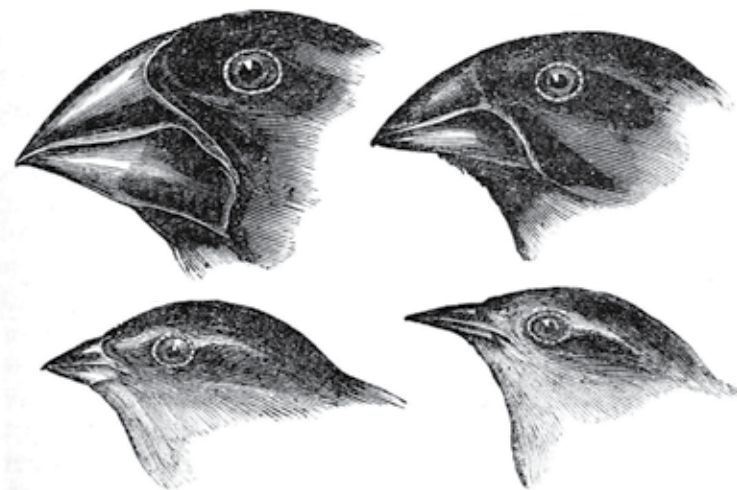
Q: Do Darwin's Finches Prove Evolution?

BRIAN THOMAS, M.S.

A: Even those who know very little about evolution have heard that some birds on some island somehow demonstrate Darwinism. Today, the evolutionary idea that all living animals descended from one original animal dominates Western culture. Of course, this idea contradicts God's Word, which clearly implies that each animal was created to reproduce only "according to its kind," not to transform into different kinds. Do the birds called "Darwin's finches" really prove Darwinian change between kinds and thus disprove the Bible on this point?

Finches live all over the world and have many varieties. Thirteen species of dark-colored finches inhabit the Galapagos Islands, situated about 600 miles west of Ecuador in the Pacific Ocean. Each island hosts more than one species, and many of these species can interbreed. Charles Darwin, who helped popularize the idea that animals can change between kinds, collected nine of the thirteen finch species when he visited the Galapagos Islands in 1835.

Textbooks assert that these finches helped convince Darwin of bird evolution, but this is incorrect. According to molecular biologist Jonathan Wells' book *Icons of Evolution*,¹ Darwin did not mention them in his diary of the voyage or in his famous book *On the Origin of Species*. The use of the Galapagos finches to represent Darwinian change came a century later through a landmark 1947 book called *Darwin's Finches*.² In 1973, Peter and Rosemary Grant—a husband and wife research team—went to the Galapagos Islands to find out exactly how finches showed Darwinian changes. The Grants carefully tracked all the finches on



one tiny island and recorded weather patterns and the birds' diets.

When a drought struck the islands in 1977, the only readily available finch food was tough nuts. Finches with slightly smaller beaks died, while those few with beaks large enough to more efficiently crack the nuts survived. Evolutionists then suggested that at this rate of beak thickening, more droughts could produce much bigger finch beaks, possibly illustrating the same mechanisms that supposedly drive Darwinian change between kinds.

However, 1982 and 1983 brought record rainfall to the Galapagos Islands that allowed the drought-stifled plants to grow back and create a lush environment. With so many soft seeds available for food, bird numbers soared. Finches with smaller beaks came right back. For every supposed evolutionary step forward, finches appear to take a step backward. No net evolution occurs in "Darwin's finches."³

Peter Grant wrote in 1991 that the beak trait in his finch population "is oscillating back and forth."⁴ Summarizing these finds in the college textbook *Evolution*, author Mark Ridley wrote that "beaks evolving up in some years, down in other years, and

staying constant in yet other years—probably results in some kind of 'stabilizing' selection over a long period of time."⁵ But transforming one animal into another kind requires radical *change*, not *stability* over a long period of time! Plus, the kind of "evolving" in subtle beak changes does not illustrate the kind of information-adding "evolving" needed to craft a fish into a reptile or a reptile into a bird.

In reality, the Galapagos finches have shown their God-given abilities to adapt and survive tough times, while keeping within their created kind. So the next time someone suggests that Galapagos finches prove evolution, you can ask, "How do size fluctuations in already existing beaks explain how bird beaks evolved in the first place?" ●

References

1. Wells, J. 2002. *Icons of Evolution*. Regnery Publishing: Washington, D.C., 160.
2. Lack, D. L. 1947. *Darwin's Finches*. New York, Cambridge University Press.
3. The Texas public high school biology textbook co-authored by atheist Ken Miller says that scientists watched the "average beak size in this finch population increase dramatically." Why did he not also say that finch beak sizes shrink, showing no net evolution? See Miller, K. R. and J. S. Levine. 2010. *Biology*. Boston, MA: Pearson, 472.
4. Grant, P. R. 1991. Natural Selection and Darwin's Finches. *Scientific American*. 265 (4): 82-87.
5. Ridley, M. 2004. *Evolution*. Malden, MA: Blackwell, 225.

Mr. Thomas is Science Writer at the Institute for Creation Research.

Carolus Linnaeus: Founder of Modern Taxonomy

JERRY BERGMAN, P.H.D.



“God created the world,
Linnaeus put it in order.”
— Å. Gustafsson —

Introduction

Carolus Linnaeus (1707–1778), Swedish botanist and zoologist, laid the foundations for the biological binomial nomenclature system still used today.¹ As the father of modern taxonomy and ecology, he is known as the “most famous botanist of all time.”² He was also “a creationist and thus an enemy of evolution.”³ Dr. Henry Morris wrote:

[Linnaeus] was a man of great piety and respect for the Scriptures. One of his main goals in systematizing the tremendous varieties of living creatures was to attempt to delineate the original Genesis “kinds.” He...[believed] that variation could occur within the kind, but not from one kind to another kind.⁴

His Life

Born in southern Sweden, Linnaeus spent much of his spare time searching for

new plant specimens and collecting flowers.⁵ First educated at Lund University, he later transferred to Uppsala University to study botany.⁶ There he soon realized the current taxonomy system used to name plants was severely lacking.

Before Linnaeus’ generation, most people lived in a simple and geographically small world and were exposed to so few organisms that it was fairly easy to achieve a taxonomic order that made good sense.⁷ In Linnaeus’ day these simple times had rapidly come to an end. At the start of the eighteenth century, hundreds of European ships left port with adventurers and missionaries eager to explore the world opening up to them. Cartographers, mineralogists, and naturalists scoured the globe for new life forms to sell to European exotica collectors.⁸

Scientists “in different countries, speaking different languages, reading dif-

ferent texts, quickly began to find it difficult to know, in any particular case, whether any two naturalists were even talking about the same animal or plant or something entirely different.”⁸ For example, the many names for buffalo included bubalus, buffle, urus, catoblepas, bubalas, theur, and the Scottish bison.

This abundance of names caused a major confusion for scholars—a problem Linnaeus set out to solve.⁹ Linnaeus was actually said to be “obsessed with order in general, a quality that helped him keep his head in the growing botanical and zoological chaos. He...and any who followed his mandates” would be able to achieve order in the natural world.¹⁰

At only 23, Linnaeus began to develop a new system to reorganize the entire plant kingdom.¹¹ In the end, it was his “organization, his spit and polish rules, that have been

among Linnaeus's most lasting gifts to science and part of what helped to rescue natural history from disarray.¹² Writing in his autobiography that Almighty God gave him insight "into His myriad forms [of life] unchanged since the day of creation," Linnaeus believed "he did indeed have a special ability that set him apart...his talents and powers [are] a clue to that difference."¹³ His entire taxonomy system was based on his belief "that God could be approached through the study of Nature," and he felt it was his Christian obligation to learn about God by studying "the wonders of the created universe."¹⁴

Over the next several years Linnaeus originated the two-word binomial classification system that uses the genus and species designation.¹⁵ He published the first edition of the taxonomy bible *Systema Naturae* (*The System of Nature*) in 1735 at the age of 28. Linnaeus achieved this feat by "laying out not only a vast compendium of rules for the ordering and naming of life, but an ordering of the entire living world."¹⁶ This book eventually grew to multiple volumes, naming some 7,700 species of plants and 4,400 species of animals "for the glory of God."¹⁷

This elegant work far surpassed other existing schemes due to its all-encompassing nature, clarity, and "simple good sense—seeming so inexplicably right to so many—that they and he would take the world by storm."¹⁸ This and his other books were very popular and sold well.¹⁹

In the 1740s, he made several journeys throughout Sweden to discover and classify new plants and animals. He continued to collect and classify animals, plants, and even minerals for his entire life, continually publishing new volumes of his *Systema Naturae*.¹ His tenth edition is now "recognized by scientists around the world as the official starting point for all zoological nomenclature, the ordering and naming of all animals," and his work *Species Plantarum* (*The Species of Plants*) would be internationally recognized as the basis for all botanical nomenclature.²⁰



His Worldwide Influence

Philosopher Jean-Jacques Rousseau wrote of Linnaeus, "I know no greater man on earth."²¹ German writer Johann Wolfgang von Goethe opined, "With the exception of Shakespeare and Spinoza, I know no one among the no longer living who has influenced me more strongly."²¹ Professor Å. Gustafsson of the University of Lund concluded that "Linnaeus is regarded in the history of biology as the brilliant classifier of nature's diversity. 'God created the world, Linnaeus put it in order.'"²²

Linnaeus was knighted in 1753 by the king of Sweden. Today he is revered "as a national hero in Sweden, depicted in countless biographies, [and] spoken of with glowing admiration in textbook after textbook. He captured and validated our world."²³ Linnaeus eventually became professor of medicine and botany at Uppsala.

Although a dedicated and popular professor, he found time to write many books, such as *Flowers of Lapland*, and he even penned a manual on classifying minerals.²⁴ From 1749 to 1769 he published 170

papers and several books on topics ranging from woodpeckers to the cause of epilepsy.²⁵ His life documents what a man of God can attain by applying Genesis to science. ●

References

1. Silverstein, A. and V. Silverstein. 1969. *Carl Linnaeus: The Man Who Put the World of Life in Order*. New York: John Day Co.
2. Anderson, M. J. 1997. *Carl Linnaeus: Father of Classification*. Berkeley Heights, NJ: Enslow Publishers, 8.
3. Winsor, M. P. 2006. Linnaeus's Biology Was Not Essentialist. *Annals of the Missouri Botanical Garden*. 93 (1): 2.
4. Morris, H. 1988. *Men of Science, Men of God*. Green Forrest, AR: Master Books, 27.
5. Yoon, C. K. 2009. *Naming Nature: The Clash Between Instinct and Science*. New York: W. W. Norton, 26.
6. Blunt, W. 1984. *The Compleat Naturalist: A Life of Linnaeus*. London: Collins Publishers, Ltd.
7. Yoon, *Naming Nature*, 27.
8. *Ibid*, 29.
9. Anderson, *Carl Linnaeus*, 13-15.
10. Yoon, *Naming Nature*, 42.
11. Anderson, *Carl Linnaeus*, 39.
12. Yoon, *Naming Nature*, 43.
13. *Ibid*, 45.
14. Appleby, J. O. 2013. *Shores of Knowledge: New World Discoveries and the Scientific Imagination*. New York: W. W. Norton, 146-147.
15. Anderson, *Carl Linnaeus*, 12.
16. Yoon, *Naming Nature*, 26.
17. *Ibid*, 49.
18. *Ibid*, 26-27.
19. Silverstein and Silverstein, *Carl Linnaeus*, 68.
20. Yoon, *Naming Nature*, 50.
21. What people have said about Linnaeus. Uppsala Universitet fact sheet. Posted on www.linnaeus.uu.se, accessed September 10, 2014.
22. Gustafsson, Å. 1979. Linnaeus' Peloria: The History of a Monster. *Theoretical and Applied Genetics* 54 (6): 241.
23. Yoon, *Naming Nature*, 51.
24. Anderson, *Carl Linnaeus*, 55.
25. *Ibid*, 99.

Dr. Bergman is Adjunct Associate Professor at the University of Toledo Medical College in Ohio.



PEOPLE YET TO BE CREATED

This will be written for the generation to come, That a people yet to be created may praise the LORD.

(PSALM 102:18)

Shakespeare’s Hamlet considered the grave question of whether to end his earthly existence with the famous words “to be, or not to be.” More basic is the issue of God’s sovereign choice to create us “to be” in the first place.

If God had not chosen to make us as His creatures, we couldn’t think, reflect, or ask any questions. Thankfully God chose otherwise and uniquely created each of us.¹ Yet how much do we really enjoy knowing and appreciating God as our personal Creator?

Origins matter.¹ Over 150 years ago Darwin’s “natural selection” theory usurped Genesis truth, and the ubiquitous influences of evolutionary mythology have since distracted many from valuing God as their magnificent and multi-generational Creator.²

Does Genesis guide your thinking about your *personal* origins, including your own family history? How was God working prior to and when He biogenetically knit you together using nuclear DNA and mitochondrial DNA blueprints? Indubitably God deserves praise for His authorship of our vast genealogical heritages (Psalm 139).

In so many details, beyond the in-the-womb procreation of our physical bodies, we owe gratitude to God for our lives (Romans 8:28). Historical events and geographical realities are ingredients that God carefully and continuously blends to make us exactly who we are.^{1,2}

God providentially plans and engineers the details of life that lead to genealogical relationships. God twice used agricultural conditions to graft Moab’s Ruth into the Jewish family of Naomi, so that Ruth ultimately met and married Naomi’s kinsman Boaz, who became Ruth’s kinsman-redeemer (Ruth 1:1, 6). And God has used family history to fulfill biblical prophecy.³

The value of family history, if appreciated from a Genesis perspective, is truly priceless. It should be learned, treasured, and trans-

ferred as a testimony to future generations (Psalm 102:18; Proverbs 13:22a; Daniel 5:20-23).

Since the creation revival began more than 50 years ago, the creation science community has rightly emphasized origins science in general.¹ Tragically, however—for at least 200 years and due largely to secularized origins science—many creation scientists have virtually ignored forensic science-qualified study of biogenetic family history, a specialized origins science applying forensic science methodology principles.^{2,3}

Anti-Genesis attitudes have sabotaged appreciation for God’s providential workings in our multi-generational family histories. Lamentably, God’s role as our Creator—at the personal level—has often been denied, dismissed, and/or discounted by the many voices of evolutionary thinking.^{1,2} No wonder today’s Christians, generally speaking, live at a “poverty level” when it comes to knowing and valuing their own family histories.

Some think Mormons have a monopoly on appreciating family history. Others, ignoring forensic science’s role in clarifying biogenetic family history, think that family history is irrelevant to origins science.^{2,3} Both assumptions miss the mark.

It is each Christian’s duty to appreciate God’s creatorship at a personal level. Doing so includes learning and valuing personal family history because God’s creative and praiseworthy providences determine whom each one of us is “to be, or not to be.” ●

References

1. See Johnson, J. J. S. 2013. Only Biblical Creation Proves God Loves You Personally. In *Creation Basics & Beyond: An In-depth Look at Science, Origins, and Evolution*. Dallas, TX: Institute for Creation Research, 97-102.
2. Biogenetic family history can and should be a subject of scientific investigation and analysis, assuming proper assessment of biogenetic data by forensic evidence standards, within a biblical framework of Genesis-informed family history. For analysis, see James J. S. Johnson’s Biogenetic Family History, an Under-Appreciated Creation Science, presented at the Creation Research Society Conference, Petersburg, Kentucky, August 9, 2014; 41 pages. This is likewise true for Genesis-based family history education (Joshua 4:6).
3. See Genesis 49:1-4, 19, analyzed in Johnson, J. J. S. 2014. How the Moabite Stone Corroborates a Prophecy in Genesis 49. *Bible and Spade*. 27 (3): 68-74. Biblical archaeology, like family history, is a forensic science by which God deserves to be honored.

Dr. Johnson is Associate Professor of Apologetics and Chief Academic Officer at the Institute for Creation Research.



A GOOD MAN LEAVES AN INHERITANCE TO HIS CHILDREN’S CHILDREN.

(PROVERBS 13:22A)



Living Missionally

EMILY MORRIS

I had the opportunity to spend two weeks in Taiwan in July 2013. When the opportunity came this past summer to return to the same part of that country for three weeks, I honestly wasn't sure if I would go. I had a lot of doubt, especially regarding raising the money. But the Lord was quick to show me He wanted me there. He provided all the money I needed in only two months! Needless to say, the doubt vanished.

Some may say it's a strange way for a college student to spend her summer vacations, but I was drawn back to Taiwan—especially to the children.

A typical day in Taiwan started around 7:00 a.m. Our team met every morning for Bible study and prayer. Then we had a quick breakfast before being picked up by members of the churches we were working with and transported to the elementary schools where the first sessions of summer camp were held.

Each member of our team, or “foreign teachers,” was assigned to a classroom. From 8:00 a.m. until noon we sang songs, helped

with crafts, learned skits, and talked as much about Jesus as we could without intimidating these elementary-age kids who, for the most part, knew only Buddhism or atheism. At the end of each week, we put on a performance for the parents to show them all the songs, skits, and stories their children had learned. The pastor would then present the gospel to the parents. After the morning camp, the sweet people from the church prepared lunch for us.

The afternoon sessions ran from 2:00 to 5:00 p.m. We held camp for kids ages 11 to 16. We read the Bible, performed silly skits, sang songs, and played lots of games. These sessions were a time for our team to really pour into these teenagers. Many of the kids from last year returned this summer. It was an enormous blessing to see seeds that were planted a year ago come to fruition. We built new relationships and continued old ones. Having the previous relationships opened up a way for us to share the gospel, and we even had the opportunity to be a part of nine teenagers coming to know Jesus Christ as their Lord and Savior! It was definitely a tear-filled and joy-filled time for us.

During our second week there, we had the opportunity to go to an orphanage where most of the children are HIV/AIDS-positive. It was an enormous blessing to love on and pray over these children—some as young as three weeks old.

The evenings were filled with adventure! Our friends from the churches took us to experience a little bit of Taiwan. We went to the night market,



Emily Morris (center) is the daughter of ICR Director of Donor Relations Henry Morris IV, the granddaughter of ICR CEO Dr. Henry M. Morris III, and the great-granddaughter of ICR founder Dr. Henry Morris. She works part-time at ICR and attends Criswell College in Dallas, Texas. In this article, Emily describes her recent mission trip to Taiwan.

explored different cities, and we definitely experimented with a lot of interesting foods.

I was recently asked what I would tell someone who is interested in taking a short-term mission trip but may not know where to start.

I'd simply say this: First things first... prayer...lots and lots and LOTS of prayer. Cover the entire situation and your desire to go in prayer.

Matthew 28:19-20 says, “Go therefore and make disciples of all the nations, baptizing them in the name of the Father and of the Son and of the Holy Spirit, teaching them....”

As believers, we are commanded to make disciples. Whether that means on the other side of the world or in your neighborhood, we are all commanded to go.

Take the responsibility that you have been given seriously and put it into practice by first living missionally right where you are. And if obeying that command means carrying it out in China, or Australia, or India, or wherever, then that's what He has for you so run ferociously after it! ●



BLESSINGS

Countless

As we celebrate Thanksgiving, it's good and right to reflect on God's countless blessings given to each of us. This is certainly true for the Institute for Creation Research. From humble beginnings, God has blessed our firm commitment to the foundational truth of a personal Creator-God and His authoritative and inerrant revelation as recorded in Scripture. The Lord has supplied, despite seasons of trial and deep need, and has steadily increased the scope and influence of our ministry to one of global proportions. Judging by countless letters of testimony and thanksgiving over the years, many people have been reached for the Lord. Such testimonies are a great blessing to me personally and to all of us here at ICR. So in the spirit

of Thanksgiving, it is my privilege to share a few excerpts.

Consider this sweet letter from a German missionary in India: "What a surprise it has been when I received your nice parcel with the book about 'The Beginnings'! And then your personal writings! Thank you so much for all your encouragements. I am now 86 years old, but still by God's grace healthy and 'workable'... and your resources...help me prepare material for the co-workers in our summer schools for slum children. Thank you for all your wonderful help—even for Indian children!"

From a dear lady in Texas: "I have appreciated so much the work of ICR over the years, encouraging me that I wasn't 'dumb' or 'standing alone' in believing Scripture, not media-pushed 'science.' Of course, real scientific research supports the Word of the One who created this universe! But so many 'conservative Christians' don't want to be embarrassed—they quibble and try to accommodate popular science—reminds me of The Emperor's New Clothes! I am so thankful for your work."

In reference to ICR's new *Unlocking the Mysteries of Genesis* DVD series, a long-time supporter from California sent this email: "It is so encouraging to see the younger generation coming along and expanding on your grandfather's work. The trailer looks very professional. I ordered the DVD set. I will pray that God opens many opportunities to share this awesome work. Sometimes we follow Him in awe and sometimes in fear (Mark 10:32). May He continue to bless you and yours."

Along the same line, a young engineer in Arizona wrote: "It was my pleasure to contribute to...the *Unlocking the Mys-*

ies of Genesis project. My parents used your resources to guide me and teach me as I grew up. I now have a solid foundation in the biblical view of creation and...my love for Jesus explodes when I think about the intricate ways He designed me and our vast universe. Also, great job on the *That's a Fact* video series and your use of social media. As a millennial, you've hit the nail on the head to engage with us."

And finally, from a military family (and first-time donors) in the Midwest: "Please pass on to all the staff at ICR how thankful we are for your faithful ministry. We knew at once when we had an unexpected source of income how God would have us share it. We bought the *Unlocking the Mysteries of Genesis* DVD set...and are already sharing it with friends in our homeschool community. We are...blessed by... *Acts & Facts* and the daily email devotional [that] is packed with more 'meat' than many Sunday sermons we've heard. Thank you for serving up the Word in satisfying servings. We also thank you for operating your ministry debt-free and being faithful stewards of the resources that God entrusts to you. We will continue to pray that God be glorified through your service to Him."

God is using the ICR ministry to reach and help people, often in ways we are unaware of. It is my prayer these marvelous testimonies have blessed you as much as they did me and will encourage you to keep praying and giving in support of our work. As for me, when I count my blessings this Thanksgiving, I'm thanking the Lord for you. ●

Mr. Morris is Director of Donor Relations at the Institute for Creation Research.



Prayerfully

Consider
Supporting
ICR

(GALATIANS 6:9-10)

Through

- Online Donations
- Stocks and Securities
- Matching Gift Programs
- CFC (Federal/Military Workers)
- Gift Planning
 - Charitable Gift Annuities
 - Wills
 - Trusts

Visit icr.org/give and explore how you can support the vital work of ICR ministries. Or contact us at stewardship@icr.org or 800.337.0375 for personal assistance.

ICR is a recognized 501(c)(3) nonprofit ministry, and all gifts are tax-deductible to the fullest extent allowed by law.



I am using the 12 *Unlocking [the Mysteries of Genesis]* series DVDs as the primary portion of a class at my church entitled “The Gospel According [to] Genesis.” After two lessons we had to move to a larger classroom—very well received!

— L.N.

I am a long-time reader of your excellent *Acts & Facts* magazine—typically reading it cover to cover. I must write to say that Dr. [Henry] Morris’s [September] article, “Declaring the Unknown God,” is one of the best I have read. His clarity and logic are penetrating. I’ll be sharing the online version with many of my friends. I have supported ICR from Canada for quite a few years now and will continue to do so because of the Christ-centered focus, rock-solid gospel stance, effective and productive research, and quality communication of findings. I love ICR and am so grateful to God for this outstanding ministry. I am excited to finally be able to make my way to an ICR conference. My wife and I will be flying to Los Angeles in October for the *Unlocking the Mysteries of Genesis* conference. I purchased and watched the DVDs a few months ago. Great job on that as well!

— C.M.



I was so excited to see the [September *Acts & Facts*] article “Another Big Bang Blunder.” I literally opened to that article immediately after reading “When the Universe Went Bang” in *Scholastic Science World* magazine. I teach high school science, physics, and chemistry in a public school and try to stay up on recent science news.

After reading the *Scholastic* article, my thoughts went to “what is the other side of the story?” It’s amazing to see the Lord work through the little things as well as the cosmic. I recently finished watching [the] *Unlocking the Mysteries of Genesis* series and loved it. It’s nice to have a quick summary of the major topics in one package. I pray that God blesses the lives of others through what ICR does as much as it has blessed me.

— B.P.

I just wanted to follow up with you and let you know we just finished Episode 7 “Dinosaurs!” [from *Unlocking the Mysteries of Genesis*]. My children really enjoy watching the series, and I think it helps to reinforce what I have been telling them for a couple years now.

— C.S.



I teach general biology to 9th-grade students and advanced biology to 12th. I appreciate the timeliness of the articles in *Acts & Facts*. They always seem to correlate with a topic I am presently teaching or about to teach. While I am a teacher in a Christian school, that does not mean all of my students believe in creation or in a literal six-day creation, so it is wonderful to have articles based on research to support statements I make or to answer questions the students have. The articles are so well written and so well supported that I also use them to teach students how to recognize well-written articles for research assignments. Please continue to provide the hard evidence (or show the lack of evidence) that refutes the evolutionary propaganda that is so prevalent in today’s media, museums, and zoos.

— L.C.

I just wanted to send you a quick note to let you know how so very blessed my family has been by the *Unlocking the Mysteries of Genesis* DVD series that ICR has created. Wow! We are using the course as a part of our homeschool curriculum this year, and it has been absolutely fabulous! Our children love it! The quality is superb and the content is excellent! I anticipate that the Lord is going to use it to equip thousands of Christians for His glory. Thank you so much for producing it!

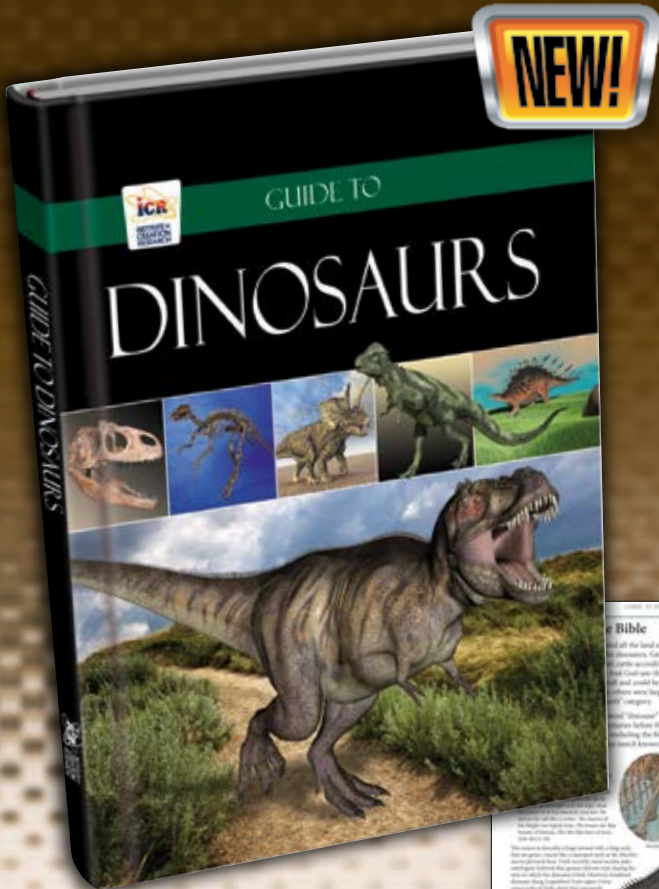
— E.Z.



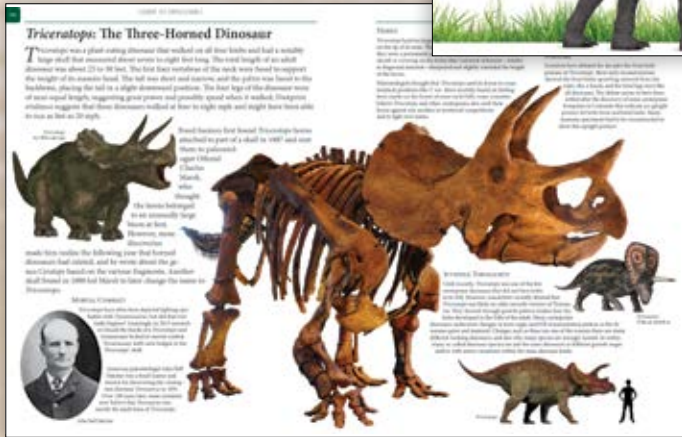
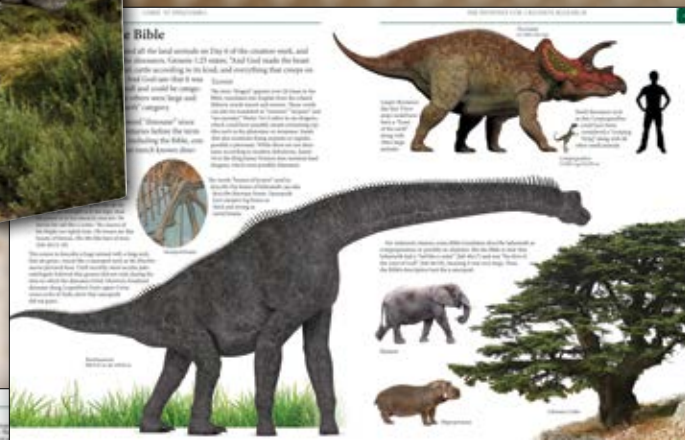
AVAILABLE NOVEMBER 15TH
The Perfect Gift for Dinosaur Fans of All Ages



P. O. Box 59029, Dallas, TX 75229
 www.icr.org



The most family-friendly biblical dinosaur book ever created!



Guide to Dinosaurs

Introductory Price

\$14.99 (reg. \$16.99)

BGTD – Hardcover
 Plus shipping and handling

Special price for a limited time only

Dinosaurs were amazing creatures. We're learning more about them all the time, but there are still many questions. How do they fit with the Bible? Are they really

millions of years old? Did they live at the same time as humans? Were dinosaurs on the Ark? Why are they extinct today? Examine the evidence and discover the real dinosaur story.

Buy all three "Guide to" books for \$29.99! SGTCBB – Hardcover

Perfect for homeschoolers or anyone who wants a detailed, easily understood science resource. (Available November 15th)

Save over \$20! • Plus shipping and handling • Special price for a limited time only



To order, call **800.628.7640** or visit **ICR.org/store**