

# ACTS & FACTS

INSTITUTE FOR  
CREATION RESEARCH

[www.icr.org](http://www.icr.org)

MAY 2009

VOL. 38 NO. 5



## CONSENSUS SCIENCE

*The Rise of a Scientific Elite*

# YOSEMITE CREATION TOUR

September 12–20, 2009

Explore the wonders of God's creation at Yosemite National Park and Mammoth Lakes.

Highlights include Half Dome, Mariposa Grove of Giant Sequoias, Tuolumne Meadows, a gondola ride to the top of Mammoth Mountain, Glacier Point, and free time to enjoy day-hiking trails, rock climbing, horseback riding, fishing, bicycling and overlooks.

- Listen as science experts from ICR reveal the incredible evidence for creation at each destination.
- Enjoy luxury travel from San Francisco to Yosemite with accommodations in Yosemite Valley, Wawona, and Mammoth Lakes.
- Fellowship with like-minded believers from around the country.
- Learn and relax within the pristine beauty of one of America's most popular destinations.

Get "Back to Genesis" this fall with the ICR Yosemite Creation Tour!

For more details on pricing and itinerary, or to request an information packet, contact ICR's tour coordinator at **800.337.0375** or [tours@icr.org](mailto:tours@icr.org).



## Time to Tighten Our Belt

When I first moved here for graduate school in the early '80s, Dallas was still considered the “buckle” of the “Bible belt.” Great churches like First Baptist Dallas, one of the original megachurches in the nation, dotted the north Texas landscape and defined a certain conservative Christian attitude that affected not only worship, but also business, politics, education, and even the leadership of sports teams (like Coach Tom Landry of the Dallas Cowboys). And while there are still great churches and preachers in Dallas, it's safe to say that “our” belt is hanging a bit too loose these days.

Driving home from church recently, I spotted one of two new billboards sponsored by a local coalition of atheists. “Don't believe in God? You are not alone” was their message, an attempt, the group declares, to let the city know that good people in Dallas, like atheists, don't need God. I'm sad to see the ads go up in my city, but not really surprised. The drift away from conservatism in religion, and in politics, is much more obvious in our nation today.

One of the failures in our culture involves the shift from, or at least the dilution of, a solid biblical worldview among Christians, which ties directly back to how Scripture is read and interpreted. Dr. Henry Morris III writes this month on “Conflicts Between Text and Theology” in the new *Acts & Facts* column Biblical Worldview.

In Austin, Texas, education officials have been wrangling over the language of science standards for the state's public schools and textbooks. Evolution activist Eugenie Scott from San Francisco flew down to the state capitol in an attempt to bully the State Board of Education to adopt her

atheistic viewpoint on science. Dr. Scott wasn't happy with the results, and the language finally approved by the board may actually have become stronger in allowing students to exercise much-needed critical thinking skills as they critique *all sides* of a scientific theory.

In this month's *Acts & Facts* you will read of new efforts in Washington to manipulate Americans into kowtowing to a new “science elite,” as described by Dr. Randy Guliuzza. Hand-in-hand with this national push for government-backed “consensus science” is “Censorship in Texas,” highlighted by Dr. Jim Johnson, who carefully lays out the strong-arm tactics of the Texas Higher Education Coordinating Board in refusing to allow ICR's 27-year-old graduate science program to move to the Lone Star State.

“Science” is the critical word in this fight. Who has the right to define science and how it should be conducted and taught?

Zoologist Frank Sherwin and Science Writer Brian Thomas take their pruning shears to the so-called Tree of Life, Darwin's failed attempt to link various species of creatures into one biological family. Even the evolutionists are admitting defeat on this “theory.” And Dr. John Morris reports on his recent trip to the Galapagos Islands for a film shoot. His conclusion: Galapagos is a showcase for creation, not evidence for evolution.

In spite of the battles raging against truth, we are encouraged at ICR. Proclaiming and defending truth has been our mandate for nearly 40 years, and our commitment to truth—uncompromising biblical truth—remains as high as ever.

**Lawrence E. Ford**  
EXECUTIVE EDITOR

## CONTENTS

- 4 Consensus Science  
*Randy J. Guliuzza, P.E., M.D.*
- 8 Galapagos: Showcase for Creation  
*John D. Morris, Ph.D.*
- 9 ICR's Fossil Family Grows
- 10 Made in His Image: Beauty in Motion  
*Randy J. Guliuzza, P.E., M.D.*
- 12 Human-Ape Hybridization: A Failed Attempt to Prove Darwinism  
*Jerry Bergman, Ph.D.*
- 14 A FAST Model for Underwater Debris Flows  
*John D. Morris, Ph.D.*
- 15 ICR's Impact: The Alpha Omega Institute  
*Christine Dao*
- 16 Darwin's Withering Tree of Life  
*Brian Thomas, M.S., and Frank Sherwin, M.A.*
- 18 Censorship in Texas  
*James J. S. Johnson, J.D.*
- 20 Letters to the Editor  
Radio Log
- 21 Home-Going Preparations  
*Henry M. Morris IV*
- 22 Conflicts Between Text and Theology  
*Henry M. Morris III, D.Min.*



# CONSENSUS SCIENCE

*The Rise of a Scientific Elite*

RANDY J. GULIUZZA, P.E., M.D.

In battle, one clever military tactic is to focus enemy troops' attention on a spectacular frontal assault so they will overlook a deadly side attack. This approach works in other arenas, as well.

On March 9, President Barack Obama ordered that federal tax money be used to promote medical research through harvesting the stem cells of, and thus destroying, human embryos. There has been much discussion about the medical ethics of this order and the government's increased power to destroy human life for "scientific" progress,<sup>1</sup> but in reality these debates, while important, drew attention away from a serious analysis of the words of the president's speech.<sup>2</sup> His order was actually a directive for "restoring scientific integrity," and stem cells served as the needed pretext.

The full speech provides evidence that Mr. Obama's words were carefully selected to exploit the accelerating drift of the scientific community's upper echelons from determining "scientific validity" based on rigorous observation and experiment, to basing it on consensus authority. Thus, preserving "scientific integrity" would not mean keeping the scientific process

from going awry, but keeping scientific outcomes in line with policy.

How? By empowering an atheist scientific elite who will decree—without debate and by consensus opinion only—the scientific validity of *all* bioethical issues, not just the killing of embryos for research. In doing this, Mr. Obama has capitalized on two trends in the scientific community: the rise of "consensus science," and the dominance of atheism among the scientific elite.

## The Rise of Consensus Science

The collective opinion of scientists in a particular field on topics where there is general agreement is called the "consensus" of those scientists. A consensus can range from scientific areas that are well supported by experiments, all the way down to areas where nothing has been established. *Rarely* are appeals to scientific consensus used in areas where experimental evidence is *strong*, but they are often favored on subjects where the science is weak to nonexistent (such as the reality of extraterrestrials or parallel universes) and, especially, on divisive social issues that need scientific input. Scientifically speaking, a serious problem arises when advo-

cates wield "scientific consensus" as if it were a valid scientific argument that carries the same weight as experimentally-derived evidence—a practice derisively called "science by consensus" or "consensus science."

A recent *Acts & Facts* article discussed an early example of consensus science in which a powerful consensus used several methods to secure international acceptance of a horrific notion with virtually no scientific support—eugenics.<sup>3</sup> These methods are still effective in establishing a scientific consensus:

- 1) New scientific journals are created and major peer-reviewed science journals serve as forums for an incestuous style of peer review and intellectual discussion.<sup>4</sup>
- 2) Faculty members of prominent universities are raised to celebrity status and their opinions promoted as those of science's most progressive thinkers.
- 3) International conferences are held with speakers and select attendees chosen to present a unified body of scientific thought.
- 4) Supporters are given high academic honors while dissenters are marginalized.



Mr. Obama has capitalized on two trends in the scientific community: the rise of “consensus science,” and the dominance of atheism among the scientific elite.

With the explosion of scientific knowledge...the expertise necessary to master even a small corner of a scientific field has made collaborating with other scientists a virtual necessity, requiring a good deal of trust among researchers....The pressures to publish not only increase the risk of mistakes made in haste but, more menacingly, raise the rewards of outright manipulation of data. Critics argue that the scientific community is generally unprepared to recognize such fraud.<sup>6</sup>

Nicolas Wade, a researcher on scientific fraud, adds, “Scientists are trained to believe that research is an entirely objective process.... That makes them all the more vulnerable to people who deceive, because they don’t have their guard up.”<sup>7</sup> Ideally, scientific results should be experimentally verified, but as a practical matter this rarely happens, as Sharon Begley observed: “Unfortunately, although the ability to replicate results is one of science’s strongest defenses against fraud, few experiments are repeated exactly....As a result, fudged data that conform to prevailing scientific wisdom...can easily slip into print.”<sup>8</sup>

Scientists’ limited expertise to raise valid questions outside their specialty, dependence on collaboration, naïve trust, and limited resources to reproduce experiments are all longstanding problems in the day-to-day operation of science. Advocates of consensus science capitalize on exploiting these problems, not working to fix them.

Some scientists, of course, do question the prevailing wisdom of “anointed authorities” and are usually met head-on by the consensus authority—but not in a laboratory. For example, in 1993 early critics of the man-made global warming consensus were called before congressional subcommittees, “setup” to look foolish, “flayed,” “hammered,” and then either got the consensus authorities’ message to shut up or “got the ax” (i.e., were fired) for being “philosophically out of tune.”<sup>9</sup> The proper forums for scientific debate are science labs and the lit-

erature. The real purpose of such intimidating treatment is always to end debate.

Illustrating classic consensus authoritarianism, in 1993 Mr. Al Gore said of global warming that there is “no longer any doubt worthy of recognition” and “only a few odd scientists” doubt the consensus.<sup>9</sup> When asked again in 2009 about the scientific validity of his opinion, he said, “The scientific community has gone through this chapter and verse....It’s not a matter of theory or conjecture.” He added that it’s “kind of silly” to keep debating the science and that “the debate is over.”<sup>10</sup> Using the power of consensus science and a relentless media campaign, any hypothesis can be established as fact and few scientists will dare criticize the actual scientific underpinnings—thus, *the debate is over*.

### The Dominance of Atheism among the Scientific Elite

When debate ends, the bias and prejudice of only one side will prevail even in the ranks of “objective” scientists. Candidly describing fellow scientists, the late Stephen Jay Gould of Harvard said, “Our [scientists’] ways of learning about the world are strongly influenced by the social preconceptions and biased modes of thinking that each scientist must apply to any problem. The stereotype of a fully rational and objective ‘scientific method,’ with individual scientists as logical and interchangeable robots, is self-serving mythology.”<sup>11</sup>

Does Mr. Obama think that the experts he wants Americans to “listen to” will rise above their own prejudices where other mortal scientists have failed? Can they really be neutral toward God? Scientific studies suggest they cannot. The percentage of atheists is highest among members of the National Academy of Sciences and other elite scientific policy-making groups, with only 7 percent believing in God.<sup>12</sup> University faculty are self-identified as atheist over five times more (even higher among scientists) than the general public; believe religion is less

These actions can bestow overwhelming scientific respectability on even scientifically empty concepts. In addition, rank-and-file scientists may find themselves under such tremendous pressure to conform that many of them yield despite their better judgment. University of Alabama Professor John Christy stated regarding climate change debates:

The tendency to succumb to group-think and the herd-instinct (now formally called the “informational cascade”) is perhaps as tempting among scientists as any group because we, by definition, must be the “ones who know”....You dare not be thought of as “one who does not know”....This leads, in my opinion, to an overstatement of confidence in the published findings and to a ready acceptance of the views of anointed authorities.<sup>5</sup>

The acceptance of views with little supporting data is bad, but the pressure to *not* be thought of as a scientific outsider can push scientists to be overconfident in the published findings of others. In his report on why scientists commit fraud and why other scientists are fooled by it, science writer William Allman said:



important and attend religious services less; and have positive feelings toward atheists, but have negative feeling for only one religious group—evangelical Christians.<sup>13</sup>

Elite scientists promote their indomitable belief that science offers the greatest and *only* hope for mankind. It is disingenuous for the president to claim that he would “appoint scientific advisors based on their credentials and experience, not their politics or ideology” when he clearly knows that his emphasis on “scientific integrity” will be governed by atheists. When he now says scientists will make policy “free from manipulation or coercion,” he knows this will lead to a *total* break from Christian moral restraints.

### What “Listen to the Experts” Really Means

Based on this policy, the president made plain the actions he expects people to take: “letting scientists like those here today do their jobs, free from manipulation or coercion, and listening to what they tell us, even when it’s inconvenient.”<sup>2</sup> In context, “listening to what they tell us” means more than paying attention or seeking to understand—it means obeying what is said. It is much clearer now that what Mr. Obama meant when he said he would “restore science to its rightful place” in his inaugural speech was really unchallengeable dominance of an amoral scientific elite over the public and any dissenting scientific views.

This is in keeping with what many elite scientists deeply believe, as reflected in the *Scientific American* article “Scientists Know Better Than You—Even When They’re Wrong.”<sup>14</sup> In it, science sociologist Harry Collins illustrated the “hubris” of ordinary people questioning scientists: “Parents believe that even though doctors assure them that vaccines are safe, those doctors may be wrong. Therefore, the parents think they are entitled to throw their own judgment into the mix.” Will parents remain entitled to their own judgment once science is fully restored to its “rightful” place?

This tyranny of the experts is not just a future possibility. In January, the Texas State Board of Education debated whether the teaching of evolution’s weaknesses should be retained in

Texas public schools’ science curriculum. Board members who sided against teaching weaknesses “cited the need to respect the work of the experts, according to the [*Dallas Morning News*, with Mary Helen Berlanga commenting, ‘We need to stay with our experts and respect what they have requested us to do’...Similarly, Rick Agosto was quoted in the *San Antonio Express-News* (January 23, 2009) as saying, ‘I have to consider the experts.’”<sup>15</sup> Even public officials who lack the proper credentials must submit to the judgment of elite scientists and show proper deference to their greater knowledge.

### Countering Scientific Elitism

How can someone combat a scientific system that favors the few, the powerful, the elite? First, when confronted with policies based on the “scientific consensus,” point out that “consensus” is not a valid scientific argument. It reintroduces bias into science and has always been used when the underlying evidence is

A serious problem arises when advocates wield “scientific consensus” as if it were a valid scientific argument that carries the same weight as experimentally-derived evidence.

weak. Urge a return to science based on experiments and observations.

Second, remember the atheistic bias of elite scientists and maintain a healthy skepticism of their opinions—particularly on broad social policies and medical ethics. In some instances the *same* people who decide what *is* data are the ones who gather the data, analyze the data, and then interpret the results into policy. For this reason, people need a healthy *distrust* of the experts. Back in 1982, even Gould warned:

People need to realize that scientists are human beings like everybody else and that their pronouncements may arise from their social prejudices, as any of our pronouncements might. The public should avoid being snowed by the scientist’s line: “Don’t think about this for yourself, because it’s all too complicated.”<sup>16</sup>

Third, support those groups that main-

tain independent oversight and review. The Institute for Creation Research is one such group. It receives no governmental, educational, or industrial funding—but ICR continues to expose the scientific weaknesses of naturalistic science.

Why did Mr. Obama choose the language he did in making his embryonic stem cell decision? Clearly, not so much for the research value of embryonic stem cells. The real goal is in due course to empower a “credentialed and experienced” scientific elite “restored to their rightful place” that come to a “consensus” of what is scientifically acceptable and make citizens “listen to what they tell us.” With that kind of power, death to embryos is just the first step. Who knows where it will end? ●

### References

- Mitchell, T. The Debate Over Stem Cells. Posted on answersingenesis.org on March 11, 2009; and Human Stem Cell Research and Use. Christian Medical and Dental Associations. Posted on cmda.org.
- The entirety of President Obama’s speech on March 9, 2009, may be read on the White House website at whitehouse.gov.
- Gulizzia, R. J. 2009. Darwinian Medicine: A Prescription for Failure. *Acts & Facts*. 38 (2): 32.
- An incestuous style of peer review means that journals select authors and referees who are not blind to one other to review each other’s work. The referees deliberately reject journal-worthy dissenting manuscripts, and like-minded consultants are named as the journal’s peer-reviewers. See Garfield, E. 1988. Religion, Rebel Scientists, and Peer Review: Three Hot Topics. *The Scientist*. 2 (24): 10; Higgs, R. Peer Review, Publication in Top Journals, Scientific Consensus, and So Forth. *Liberty & Power: Group Blog*. George Mason University’s History News Network, May 7, 2007; Begley, S. Whitewashing Toxic Chemicals. *Newsweek*, May 12, 2008.
- Christy, J. No consensus on IPCC’s level of ignorance. *BBC News*. Posted on news.bbc.co.uk November 13, 2007.
- Allman, W. Cooking the Paleontological Books? *U.S. News & World Report*, May 8, 1989, 61.
- Broad, W. and N. Wade. 1983. *Betrayers of the Truth*. New York: Touchstone Books, as quoted in Allman, Cooking the Paleontological Books?
- Begley, S. Why Scientists Cheat. *Newsweek*, February 8, 1982.
- Jenkins, H. Al Gore Leads a Purge. *Wall Street Journal*, May 25, 1993, C1.
- Johnson, K. A. Heated Exchange: Al Gore Confronts His Critic(s). *Wall Street Journal Blogs*, March 5, 2009.
- Gould, S. J. 1994. In the Mind of the Beholder. *Natural History*. 103 (2): 15.
- Larson, E. and L. Witham. 1998. Leading scientists still reject God. *Nature*. 394 (6691): 313.
- Tobin, G. A. and A. K. Weinberg. 2007. *Profiles of the American University, Volume II: Religious Beliefs and Behavior of College Faculty*. San Francisco, CA: Institute for Jewish & Community Research. See also Klein, D. B. and C. Stern. 2005. Professors and Their Politics: The Policy Views of Social Scientists. *Critical Review*. 17 (3-4): 257; Cardiff, C. F. and D. B. Klein. 2005. Faculty Partisan Affiliations in All Disciplines: A Voter Registration Study. *Critical Review*. 17 (3-4): 237; Rothman, S., S. R. Lichter and N. Nevitte. 2005. Politics and Professional Advancement among College Faculty. *The Forum*. 3 (1): article 2.
- Minkel, J. R. Scientists Know Better Than You—Even When They’re Wrong: Why fallible expertise trumps armchair science—a Q&A with sociologist of science Harry Collins. *Scientific American*, May 9, 2008.
- Victory over “weaknesses” in Texas. National Center for Science Education news release, January 26, 2009.
- Gould, S. J. How Science Changes with the Political Climate. *U.S. News & World Report*, March 1, 1982, 62.

Dr. Gulizzia is ICR’s National Representative.

# ICR EVENTS

## MAY 2009

**MAY 1-2**

Oklahoma City, OK – Oklahoma Christian Home Educators' Convention  
405. 810.0386

**May 3**

Dallas, TX – Genesis Presentation  
(Sherwin) 214.762.3287

**May 8-9**

Arlington, TX – 25th Annual Home School Book Fair  
(Gulizza, Sherwin) 972.231.9838

**May 15-16**

San Antonio, TX – 2009 FEAST Home School Convention  
210.342.4674

**May 17-19**

Swartz Creek, MI – Genesis Presentation  
(J. Morris) 810.635.4845

**May 18-21**

Chicago, IL – Moody Pastors' Conference  
312.329.4407

**May 20-25**

Siguatopeque, Honduras – Ministerios Evangélicos De Las Américas Conference  
(H. Morris III)

**May 21-23**

Orlando, FL – 2009 FPEA Florida Home-school Convention  
(Parker) 877.275.3732

**June 1-5**

Johnson City, TN – Biblical Worldview Student Conference  
(J. Morris) 423.288.3121

For more information on these events or to schedule an event, please contact the ICR events department at 800.337.0375 or [events@icr.org](mailto:events@icr.org).

# DEMAND THE EVIDENCE CONFERENCES



## CONFERENCES THIS FALL

FIRST BAPTIST CHURCH, JACKSONVILLE, FL  
GRACE COMMUNITY CHURCH, SUN VALLEY, CA  
FIRST BAPTIST CHURCH, DALLAS, TX

For more information, visit [icr.org/conference](http://icr.org/conference)

To bring an ICR conference to your city, please contact [events@icr.org](mailto:events@icr.org) or call 800.337.0375.

DEMAND THE EVIDENCE. GET IT @ ICR.

# Galapagos: Showcase for Creation



**T**his year evolutionists are celebrating Charles Darwin's 200th birthday and the 150th anniversary of the publication of his

book *The Origin of Species*. In preparation for this celebration, last December ICR sent Dr. Steve Austin to the Santa Cruz River Valley in southern Argentina to follow up on Darwin's trip on the *Beagle*. On board, Darwin read Charles Lyell's new book on uniformitarianism, advocating that today's "uniform" processes had dramatically sculptured the earth over long ages, accomplishing much geologic work.

The Santa Cruz River was the *Beagle's* first major stop, and thus Darwin's first chance to apply Lyell's ideas. Dr. Austin discovered Darwin had made numerous errors in Argentina as he attempted to interpret the river valley according to uniformity, and mistook major Ice Age flooding for great ages of minor processes.

Darwin's voyage continued, sailing around to the west of South America where the ship encountered the Galapagos Islands, straddling the equator. Here Darwin applied uniformitarianism to living systems, and eventually proposed slow-acting evolution as the source of life's diversity. ICR was certain he was equally as wrong on Galapagos as he was in Argentina, and desired to demonstrate it.

This became a reality when Doug Phillips and Vision Forum asked me to accompany them to the Galapagos during the week of March 9-15. They were shooting a Christian family film about a Christian father teaching his son about creation and the dangers of evolution. The film featured interviews with several experts, including me. The project's leading question was: Is Galapagos a living laboratory for evolution or a showcase for creation?

As has been pointed out in these pages, the one thing that Darwin didn't mention in



his book *The Origin of Species* was the origin of species. He discussed at length variety within a species (i.e., pigeons or finches), and merely assumed that these minor, observed changes (microevolution) add up to large changes (macroevolution). This is the unsupported "faith" of the evolutionist. ICR's previous investigations on the Galapagos Islands had convinced us that no evolution is going on there.

The islands abound with unusual life. Going there was a wonderful "animal experience" for all of us, for the animals show little fear of humans. The rather barren volcanic islands afford unencumbered visibility of giant Galapagos turtles, sea lions, land and marine iguanas, Darwin's finches, "booby" birds, flightless cormorants, flamingos, frigate birds, etc., along with sea creatures accessible by snorkeling.

Evolutionists make much of the adaptation of land-based iguanas to ocean life. But is this evolution? No! The two rather different "species" freely interbreed in the wild. Evolution is about the origin of new species from existing species, but here we see the amalgamation of species, the opposite of evolution.

Evolutionists trumpet the several Galapa-

gos finch "species" as arising by adaptation from one species. Creationists agree, but this did not happen through evolution. Normally the finch types segregate by lifestyle according to their beak shape, but in times of stress they interbreed and combine. No evolution here. The flightless cormorants are recognizably related to other species of cormorant on other continents, but these have lost the use of their wings. Since when is the loss of a useful structure an evolutionary development? The real question is how animals acquire wings in the first place, not how they lose them.

No, there is no evolution happening on the Galapagos Islands. They really are a showcase for creation. On display is God's wise creative design in preparing robust gene pools in each created "kind" that enable all of God's creatures to adapt and survive varying conditions.

Darwin got it wrong at the Galapagos Islands. The Genesis account stands.

  
John D. Morris, Ph.D.  
PRESIDENT



# ICR's FOSSIL FAMILY GROWS

The Institute for Creation Research has recently acquired some exquisite fossils to add to its collection. The newest members of ICR's fossil family are being installed in the "fossil walk" at ICR's headquarters in Dallas, Texas, and will aid us as we demonstrate the evidence for a recent creation and global Flood to our visitors and students.



## Armored Fish

*Bothriolepis canadensis*

Escuminac Formation, Miguasha, Quebec, Canada

*Bothriolepis* ("pitted scale," after the irregular surface on its bony plating) was a member of a now extinct group of placoderms. Originally mistaken for a tortoise, it is actually a highly developed fish. The head is fused to a thoracic shield, and the eye and nostril openings are located on the upper side while its mouth is on the lower side. Creation scientists believe this fossil was buried during the early stages of the Flood.

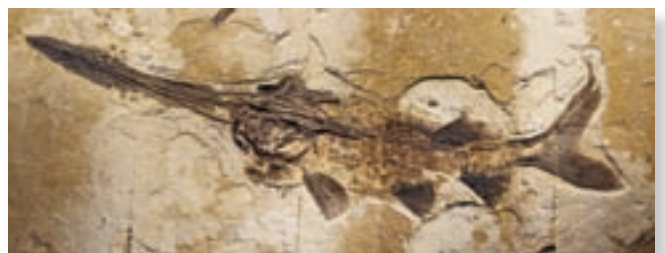
ICR will continue to add to its collection in anticipation of establishing a new museum and learning center on its Dallas campus in the future.

## Squid

*Leptotheuthis gigas*

Solnhofen Formation, Eichstätt, Bavaria, German

Squid remains rarely survive in any completeness due to the soft nature of much of their bodies. In this fossil, one can even make out the imprints of the tentacles. Where some of the outer body surface was not preserved, the inner anatomy can be observed. This species belongs to the largest squids in the fossil record. This particular squid was probably fossilized during the Flood.



## Paddlefish

*Crossopholis magnicandatus*

Green River Formation, Wyoming, USA

A relative of the modern paddlefish, *Crossopholis* are thought to have been filter feeders, straining zooplankton out of the water with fine filaments called gill rakers located in the fill arches inside their mouths. *Crossopholis* are rarely fossilized since they require complete and immediate burial to prevent the decomposition of their organic tissue. This specimen is most likely post-Flood.



# Beauty in Motion

RANDY J. GULIUZZA, P.E., M.D.

**H**umans possess a phenomenal ability to roll, twist, spin, jump, twirl, flip, run, leap, and lunge, as a single motion or in complex combinations, in bare feet or with slippers, shoes, skates, skis, boards or rollers, forwards or backwards, on one leg or with two, or simply to balance motionless on one arm or tiptoe on the

first step to controlling a body is to sense what is happening to it. Two important sensors detect *inertia* and *momentum*. Inertia is the property of objects to resist being moved. It takes a certain amount of force to move an object from a dead stop, or to make it move faster or slower. More force is needed to accelerate a rock than a feather. When an object is already

moving, momentum is the property that operates to keep it moving. A moving rock has more momentum than a feather at the same speed. stance. The hairs from below stick up and are embedded in the gelatin. The top layer is, amazingly, a mat of hundreds of tiny rock crystals or *otoliths* (literally “ear stones”) made of the same material as limestone. It is like having a plate containing a block of gelatin with a heavier plate on top. A quick push on the bottom plate causes the gelatin to flex until the top plate matches the same speed as the bottom plate.

moving, momentum is the property that operates to keep it moving. A moving rock has more momentum than a feather at the same speed.

In maculae, head movements cause the rock layer on the gelatin to “jiggle” in relation to the base. The distance it moves is smaller than a *hair’s* width, but that tiny motion is still detected. Using heavy rock material for the top is a brilliant choice, since it ensures that even slight

This design alerts a person only when changes to speed happen—which is the exact information people need.



*Ye Rose Studio, Providence, R.I. / public domain*

top of a champagne bottle. Ballerinas, gymnasts, and ice skaters depend on their bodies’ ability to not only balance, but also to sense speed of rotation and body position, and then make just the right body adjustments. How does all of this work together?

Just like man-made control systems, the

a patch of support cells surrounding rows of specialized “hair cells,” which generate electrochemical impulses. The hair cell has four very short hair-like projections on top that regulate how fast the signals are sent according to which direction the hairs are bent.

The middle layer is a gelatin-like sub-

accelerations generate a force strong enough to be identified. Remarkably, these components are bundled in a package about the size of a grain of rice. The body has two sensors—suitably oriented with one perpendicular and one parallel to the earth’s gravitational pull—located on each side of the head.

So how do they work? With forward movement, *inertia* momentarily holds the rock layer still and the gelatin allows the base to slide forward in relation to the rock layer, for a time as short as *1/1000 of a second*, until the rock layer catches up. The gelatin and hair cell projections flex backward, sending faster signals to the brain. When movement stops, the rock layer’s *momentum* carries it forward, the hair projections are bent forward, decreasing the signals sent. The other sensor works similarly when the body is moved up and down in an elevator. This design alerts a person only when *changes* to

speed happen and does not constantly annoy a person with alerts when speed is steady—which is the exact information people need.

### Sensing Rotary Movement

Rotating movements on an axis (rolls, spins, or cartwheels) are detected by another inner ear sensor called semicircular canals. This sensor uses three tiny *round* tubes formed directly in the skull—the optimal shape for detecting rotary motion. Their orientation allows rotations in any possible axis to be detected. An inner membrane covering produces a fluid called *endolymph*, which completely fills the inside. Since it is a fluid, it will slip relative to the bony tube when rotation starts, but quickly attains the same speed if rotation continues.

Motion detectors protrude into the endolymph. They are composed of hair cells with hair-like projections embedded in a mobile gelatin-like mass called a *cupula*. When a body spins one direction, *inertia* momentarily holds the endolymph still, which deflects the cupula in the *opposite* direction until the endolymph catches up. Bending the hair cell projections one way sends faster signals to the brain. When the spin stops, the endolymph's *momentum* carries it past the now stopped cupula, and the cupula deflects the *opposite* way, decreasing the signals sent. Extremely sensitive, each round tube can detect rotary accelerations as low as 0.1 degree/second<sup>2</sup>.

### Sensing Head and Other Muscle Movement

This description of these receptors is very simplistic, but they are actually complex mechanical-electrical devices with housings formed right into a baby's skull as it develops in the womb. But even these are not enough. Visual input—not just what the eyes see but also

where they are aimed—is sensed and that huge volume of data is sent to the brain.

Thousands of sensors in skeletal muscles monitoring the sum of internal forces and rates of contraction also send data. Sensors in tendons send data on even the slightest changes in tension between muscle and bone. Even internal pressures of fluids in capsules surrounding major joints like the knee joint are checked. To give an idea of the enormous quantity of data reaching the brain, the signal rate from just the maculae monitoring only linear motion while *at rest* is about two million impulses per *second*. Now add signals from all

The data the cerebellum manipulates in just one second would either fry the world's best super-computer at the same speed or take years to process at normal speeds.

of the thousands of other sensors and include the signal rate changes due to motion!

### The Brain Integrates Sensations with Body Movement

The part of the brain managing much of this data and turning it into information is the cerebellum. It contributes only 10 percent of brain mass but contains nearly 50 percent of the neurons in the brain. Why? Because the data it manipulates in just one second would either fry the world's best supercomputer at the same speed or take years to process at normal speeds.

Think of a gymnast learning a vault. Huge arrays of information are compared, analyzed, and adjusted at blindingly fast speeds. Data from all sensors as well as data from the eyes are continuously compared to each other. This voluminous data array is compared to memory

patterns, learned and innate, stored in the brain to correctly identify the actions happening to the body. This comparison is equivalent to solving hundreds of complex mathematical equations.

The information is then compared to another vast array sent from the motion planning part of the brain in order to fine-tune plans for dozens of muscle movements simultaneously. Then as the body executes the motion, feedback from motion and muscle sensors is rapidly and constantly compared to the plan and any deviations are corrected until the vault ends. Contrast that to robot designers who celebrate for just getting a robot to walk on level ground—now let it *respond* to a stiff gust of wind.

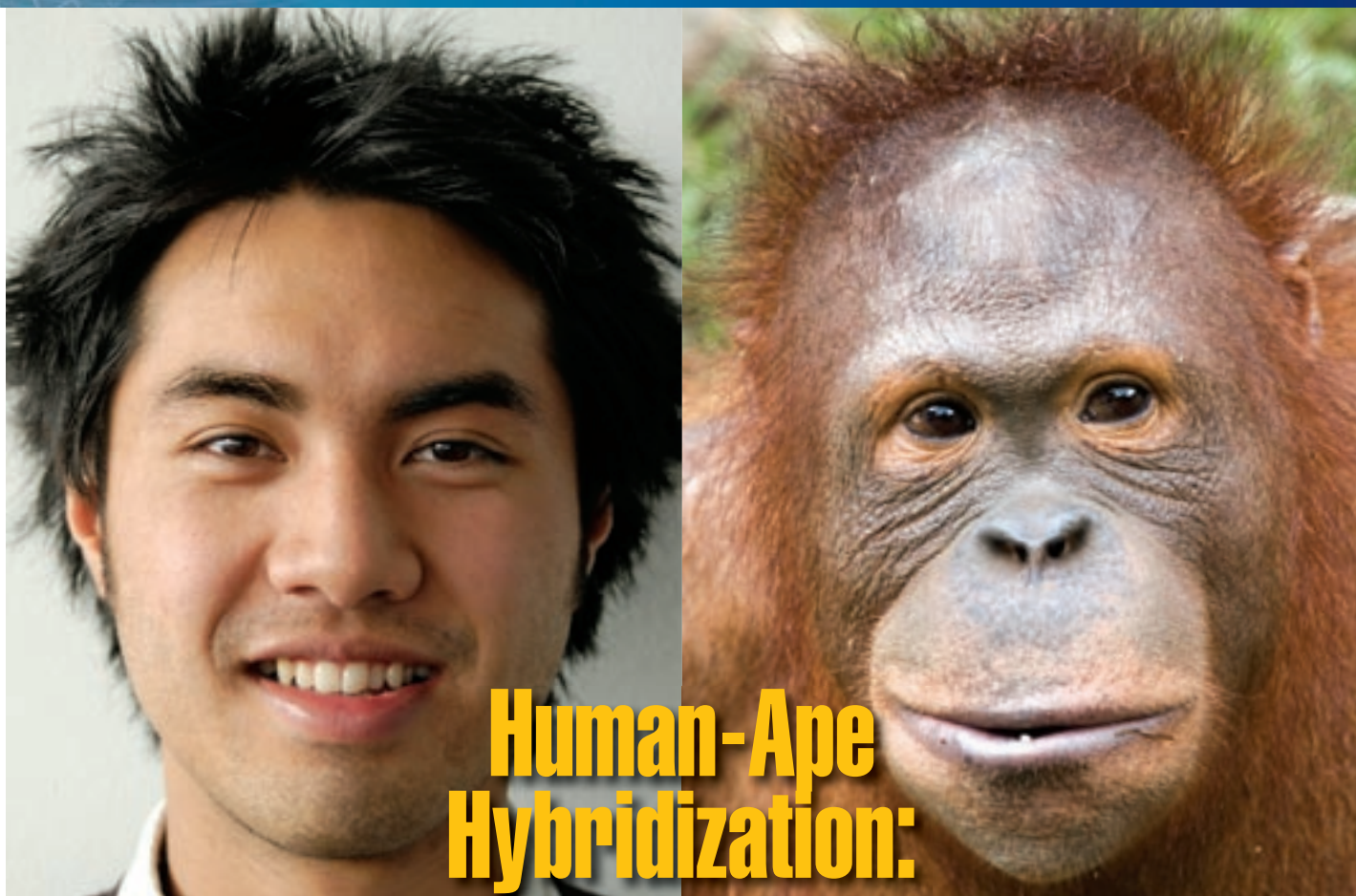
### Conclusion

It is clear that there is no such thing as an isolated “balance system.” The body uses all of its systems to balance and, in the process, ingeniously exploits properties of nature such as inertia, momentum, and gravity. In this area, humans are unmatched. No human-engineered device can come close. Even strong and nimble animals can't compare. The ability for humans to spin, flip, etc., may confer some supposed survival value. However, when considering the graceful yet powerful performance of an ice skater or gymnast, a better explanation is that humans share a certain attribute with their Creator, the Lord Jesus Christ—an appreciation for beauty.

Who can begin to grasp the knowledge and capability of the Lord Jesus? What He creates integrates so many properties of nature it leaves no doubt that He is Lord of all. ●

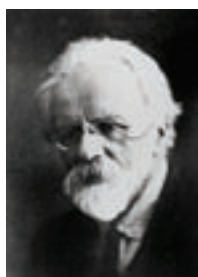
Dr. Guluzza is ICR's National Representative.





## *A Failed Attempt to Prove Darwinism*

JERRY BERGMAN, P.H.D.



Ilya Ivanov (1870-1932) was an eminent biologist who achieved considerable success in the field of artificial insemination of horses and other animals. Called “one of the greatest authorities on artificial fecundation,”<sup>1</sup> he graduated from Kharkov University in 1896 and became a professor of zoology in 1907. His artificial insemination techniques were so successful that he was able to fertilize as many as 500 mares with the semen of a single stallion.

Ivanov also pioneered the use of artificial insemination to produce various hybrids, including that of a zebra and a donkey, a rat and a mouse, a mouse and a guinea pig, and an antelope and a cow. His most radical experiment, though, was his attempt to produce a human-ape hybrid.<sup>2</sup> He felt that this feat was clearly possible in view of how successful he had been in his animal experiments—and how close evolutionary biologists then regarded apes and humans. The experiments were supported by some of the most respected biologists of the day, including Professor Hermann Klaatsch<sup>3</sup> and Dr. F. G. Crookshank.<sup>4</sup> The main opposition was from “two or three religious publications.”<sup>5</sup>

### **His Project Begins**

In the mid 1920s, Professor Ilya Ivanov began his project, funded by the Soviet government, to hybridize humans and apes by artificial insemination.<sup>6</sup> The funds for his project equaled over one million in today’s dollars. Ivanov presented his human-ape hybrid experiment idea to the World Congress of Zoologists in Graz, and in 1924 he completed his first experiment in French Guinea. He first attempted to produce human male/chimpanzee female hybrids, and all three attempts failed. Ivanov also attempted to use ape males and human females to produce hybrids but was unable to complete the experiment because at least five of the women died.

Because Ivanov was then an internationally respected scientist, he was able to obtain prominent sponsors for his project, including the polymath Otto Schmidt, editor of the *Great Soviet Encyclopedia*, and Nikolai Gorbunov, a chemical engineer and close friend of Lenin.<sup>7</sup>

After Professor Ivanov detailed the rationale behind his idea, the British government, home of Darwin, promised to help raise money for the project. The Russian government contributed the first \$10,000, and a number of prominent American patrons of science were also very supportive of the project.

## Efforts to Support Evolution

Charles Lee Smith wrote that the objective of Ivanov's experiments was to achieve "artificial insemination of the human and anthropoid species, to support the doctrine of evolution, by establishing close kinship between man and the higher apes."<sup>5</sup> The project was supported by The American Association for the Advancement of Atheism because it was seen as "proof of human evolution and therefore of atheism."<sup>8</sup> When applying to the Soviet government for funds, Ivanov emphasized the importance of his research for anti-religious propaganda.<sup>7</sup>

Attorney Howell S. England wrote that the scientists involved in advising the project "are confident that hybrids can be produced, and, in the event we are successful, the question of the evolution of man will be established to the satisfaction of the most dogmatic anti-evolutionists," concluding that the "original idea was that only hybrids from the gorilla would prove fertile."<sup>5</sup>

However, the scientist advisors wanted the field researchers to use orangutans, chimpanzees, gorillas, and possibly gibbons in the experiments. The researchers accepted the polygenetic theory of human evolution, concluding that orangutans should be crossed with humans of the "yellow race," gorillas with humans of the "black race," chimpanzees with the "white race," and gibbons with "the more brachycephalic peoples of Europe" (he probably meant Jews). The purpose was "to try to demonstrate the close relationship of human and ape stocks."<sup>9</sup>

The scientists concluded that these matches would ensure that the hybrids were fertile because it was believed that the "yellow race" evolved from orangutans, the "black race" from gorillas, the "white race" from chimpanzees, and the "brachycephalic peoples" from gibbons. They even concluded that "it would be possible to produce the complete chain of specimens from the perfect anthropoid to the perfect man."<sup>7</sup> Howell England wrote that Dr. Crookshank of London, who "has made a minute anatomical study of the three larger anthropoids," is convinced from his research that if the "orang" can successfully be "hybridized with the yellow race, the gorilla with the black race, and the chimpanzee with the white race, all three hybrids will reproduce themselves."

In his opinion each species of anthropoid is more closely related to its corresponding human type than it is to either of the other anthropoids. In other words...the chimpanzee has a closer relationship to the white race than to the gorilla or the orang. The gibbon...has its corresponding human type in the more brachycephalic peoples of Europe.<sup>10</sup>

England noted that the research team would proceed along these lines because the scientists involved were all in complete accord with Dr. Crookshank's views. To achieve their research goals, the scientists used deception. For example, Ivanov attempted to "inseminate black females with ape sperm without their consent, under the pretext of medical examination in the local hospital."

**Ivanov also attempted to use ape males and human females to produce hybrids but was unable to complete the experiment because at least five of the women died.**

The French governor, however, forbade him from carrying out this part of the project. But Ivanov saw no moral problem here. He angrily reported to his sponsors in the Kremlin about the primitive fears of the blacks and the bourgeois prejudices of the French.<sup>7</sup>

*Time* magazine opined that if this experiment failed, evolution would still not be invalidated because this "test of evolution would be decisive only in the event that pregnancy, whether productive of healthy offspring or not, could be induced." Conversely, if the experiment succeeded, "fresh and final evidence would be established that humans and anthropoids belong to a common genus of animal life." Furthermore, to more confidently establish human-from-ape evolution as fact, the "hybrid fertilization would have to be attempted upon females of both species, human and ape."

Fully formed, healthy offspring, if they resulted, would not be regarded as "missing links," but as living proof that apes and men are species as closely allied as horses and asses which can be hybridized to produce mules or hinnies. If an ape-man or man-ape hybrid should prove fecund, the relationship of the two parent species would be proved even closer than is now supposed. If no offspring resulted, evolution would by no means fail; the distance of apes and men from a parent stock would merely be demonstrated to be as great or greater than it is now estimated.<sup>10</sup>

In the end, the research failed and has not been attempted again, at least publicly. Today we know it will not be successful for many reasons, and Professor Ivanov's attempts are, for this reason, a major embarrassment to science. One problem is humans have 46 chromosomes—apes 48—and for this reason the chromosomes will not pair up properly even if a zygote is formed. Another problem is a conservatively estimated 40 million base pair differences exist between humans and our putative closest evolutionary relatives, the chimps. These experiments are the result of evolutionary thinking and they failed because their basic premise is false.<sup>11</sup> ●

### References

1. Russian Admits Ape Experiments. *The New York Times*, June 19, 1926, 2.
2. Pain, S. 2008. The Forgotten Scandal of the Soviet Ape-Man. *New Scientist*. 2670: 48-49.
3. Klaatsch, H. 1923. *The Evolution and Progress of Mankind*. Ed. Adolf Heilborn, trans. Joseph McCabe. New York: Frederick A. Stokes Company Publishers.
4. Crookshank, F. G. 1924. *The Mongol in Our Midst: A Study of Man and His Three Faces*. New York: E. P. Dutton & Co. Revised (3rd) edition, 1931. London: Kegan Paul, Trench, Trubner & Co.
5. Soviet Backs Plan to Test Evolution. *The New York Times*, June 17, 1926, 2.
6. Etkind, A. 2008. Beyond Eugenics: The Forgotten Scandal of Hybridizing Humans and Apes. *Studies in History and Philosophy of Biological and Biomedical Sciences*. 39 (2): 205.
7. Ibid, 206.
8. Ibid, 209.
9. Ape-Child? *Time*. 8 (7), August 16, 1926.
10. Men and Apes. *Time*. 7 (26), June 28, 1926.
11. Richards, M. 2008. Artificial Insemination and Eugenics: Celibate Motherhood, Euteleogenesis and Germinal Choice. *Studies in History and Philosophy of Biological and Biomedical Sciences*. 39 (2): 211-221.

Dr. Bergman is an Adjunct Associate Professor at the University of Toledo Medical School in Ohio.



# A FAST Model for Underwater Debris Flows

J O H N D . M O R R I S , P H . D .

**G**eologic research continues to play a significant role at the Institute for Creation Research, as it has since its founding. Recognizing that the great Flood of Noah's day accomplished significant geologic work opened the door to groundbreaking research. This insight provided solutions to many plaguing difficulties in creation thinking, and continues to inform it today.

ICR's latest geologic research has gone under the banner of FAST, or Flood-Activated Sedimentation and Tectonics. Numerous FAST projects are currently investigating specific questions under the sponsorship of the National Creation Science Foundation (NCSF), the research wing of ICR. Some are field studies, and others are vital theoretical and computer simulation projects, which together have the potential to add much to our understanding of Flood geology.

One funded project is already underway, directed by a mathematics professor at a southern university and entitled "Numerical Simulation of Underwater Debris Flows." The goals of the study are threefold, as stated in the project proposal:

1. To develop a two-dimensional numerical code capable of simulating underwater debris flows as two-phase flows with highly nonlinear viscous effects.
2. To validate simulations performed using this code against available experimental data.
3. To use this code to determine the behavior of these flows as they travel and the structure of the sediment within these flows when they terminate.

Underwater debris flows are a proposed mechanism for the rapid deposition of layers of sedimentary rocks, as evidenced in geological formations such as Grand Canyon, but this mechanism is poorly understood. Other researchers in FAST are applying the flows in their projects, but more rigor is needed for the studies to reach their full potential. The purpose of this research is to develop a numerical model that will provide insight into the behavior of these flows and to understand the manner in which the debris settles when the flows terminate, with the ultimate goal of providing evidence for the hypothesis that strata can be formed in this manner.

Through the FAST program, we are striving to understand the geological events that occurred as a result of the global Flood recorded in Genesis. Even though the Flood had a supernatural cause, the surrounding events were governed by the laws of creation, including enormous tectonic activity, planetary atmospheric events, and continent-wide water flows, involving extensive erosion, transportation, and deposition of granular and sedimentary materials. One of the main goals of the FAST program is to understand how these natural forces that were active during the great Flood could have formed the geological record, such as the features and strata visible within Grand Canyon.

Expectations are that the research will require both computational modeling and laboratory verification, and will be conducted over the next two summers. We will continue to keep you posted about the results of these projects, as well as other research conducted under NCSF grants. If you would like to be a part of this vital work, or would like to submit your own proposal, please contact us. ●

*Dr. Morris is President and Director of Research at the Institute for Creation Research.*

# The Alpha Omega Institute

CHRISTINE DAO

Dave and Mary Jo Nutting were college instructors in math and science in Alaska when they came upon Dr. Duane Gish's *Evolution: The Fossils Say No!* in a second-hand bookstore. "The book cost a mere nickel; however, the impact of that little five-cent book has now reached around the world," Dave Nutting wrote in a recent letter to the Institute for Creation Research.

"You might say we were theistic evolutionists at the time," Mary Jo said in a phone interview. Dr. Gish's book, however, presented the scientific fossil evidence for creation, and that started to expand their thinking.

After stumbling upon Dr. Gish's book, they wrote to ICR in 1975 and asked if someone could travel to Sheldon Jackson College in Alaska to talk about young-earth creation science. The speaker who came was ICR Founder Dr. Henry M. Morris.

"His lectures were crucial in cementing us into the creation movement," Mary Jo said. "After [Dr. Morris] taught, more of the faculty at our school started coming out about creation."

She also spoke of students they had years ago who still keep in touch with the Nuttings' current ministry, students who have gone on to spread the truth about creation.

"We had one student [at Sheldon Jackson] named Jeff who would close the conversation every time Dave talked about creation," Mary Jo said. "He told Dave, 'I can't buy this Jesus stuff. Evolution is fact. Genesis is wrong. If God got the first book of the Bible wrong, then everything else is going to be wrong.' We were interested in the scientific aspect of creation science. But that's when we saw the spiritual implications of believing in evolution."

She explained that after Dr. Morris' lecture at Sheldon Jackson, Jeff came to Dave and said he had "a lot of thinking to do." Soon after, Mary Jo said, Jeff gave his life to Christ.

"We saw how a lot of people were kept from God because of evolution," Mary Jo said. "We were very much influenced by ICR. We went to ICR to get an education so that we could learn from the people at the forefront of the [creation/evolution] battle."

After Dave and Mary Jo received masters degrees in geology and biology, respectively, from the ICR Graduate School in the early '80s, they left the world of academia in 1984 to start the Alpha Omega Institute, a Colorado-based ministry "dedicated to teaching the Biblical

and scientific evidence of creation throughout the world."

Since then, the Nuttings and AOI's other speaker teams have conducted seminars across the United States and around the world. They speak at churches, private schools, family camps, and on university campuses at the invitation of student-led ministries. "In places like India and Mexico," Mary Jo said, "we've been able to teach at public schools. That would never happen here [in the U.S.]."

AOI also conducts camps and trips focused on teaching families about creation science while enjoying God's creation. AOI speakers have also accompanied ICR faculty on tours such as the Grand Canyon trip.

This year, 2009, marks the 25th anniversary of AOI's inception. "We are humbled by God's faithfulness over the years, and very grateful for the opportunity to be involved in His work," Dave Nutting wrote. "Thank you, ICR, for the impact you have had in our lives and consequently in the lives of many others." ●

*Ms. Dao is Assistant Editor.*



# Darwin's Withering Tree

BRIAN THOMAS, M.S., & FRANK SHERWIN, M.A.

Charles Darwin drew his first “evolutionary tree” in his “B” notebook in 1837, with the words “I think” scrawled above it, to illustrate his idea that all of today’s species arose from a single common ancestor. This

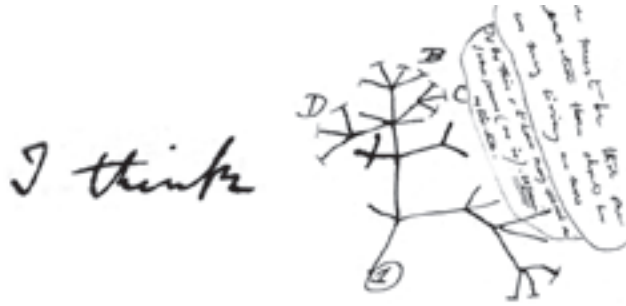
concept lies at the heart of evolutionary thinking, and the tree-like images that often accompany its instruction have been effective indoctrination tools.

However, if today’s creatures evolved from some other creature millions or billions of years ago, then the Bible’s history must be abandoned. This is because Scripture does not leave any room for eons of time. Where and why would one add “millions of years” to an account that consists of tight chronologies that lead back to a creation week in which “in six days the LORD made heaven and earth” (Exodus 20:11)?<sup>1</sup> Second, Scripture consistently refers to living creatures as belonging to basic “kinds” or forms (Genesis 1:21, 24-25), not as having descended from totally different kinds. Either evolutionary history is correct, or biblical history is. There is no middle ground.

Of late, evolutionary family trees have been unraveling, and this comes as no surprise if macroevolutionary theory is largely false. Most attempts to build these evolutionary, or phylogenetic, trees have been so fraught with inconsistencies that some researchers are abandoning the whole paradigm, as reflected in a recent article in *New Scientist* magazine titled “Why Darwin Was Wrong About the Tree of Life.”<sup>2</sup> Thus, if Darwin was right, then both the Bible and science are wrong.

## Molecular vs. Morphological Trees

Traditional phylogenetic trees connect living species with possible ancestors based on morphology—the forms or shapes that characterize them. But since each scientific investigator always had his or her unique opinion regarding what evolved into what (and when), evolutionary scientists needed a more objective basis to undergird Darwinian evolution. Thus, in recent decades, they have been optimistic that species-specific



molecular sequences, continuously emerging from biochemistry labs, could bail out evolutionary phylogenies. They felt that by digitally comparing the protein or DNA sequences, authoritative phylogenetic trees could be constructed that would finally

show the evolutionary links between all forms of life.

Using molecular instead of morphological data was expected to provide more accurate evolutionary trees than the mostly shattered and incomplete fossils that have historically added more confusion than clarity. However, these hopes have been dashed because “battles between molecules and morphology are being fought across the entire tree of life.”<sup>3</sup> Scientists increasingly recognize that different gene and/or protein sequences only add up to the same evolutionary trees when they are coerced and manipulated. Even so, the new trees based on these sequences consistently contradict the traditional, “old school” evolutionary trees.

## Contradictory Evolutionary Stories

Study after study is finding even more problems with evolutionary lineages from the molecular data than existed with the morphological data. In fact, the two approaches consistently provide irreconcilably different evolutionary histories. One study that looked at certain DNA segments found that the gene sequence data was 99 percent off from the Darwinian model.<sup>4</sup> *New Scientist* admitted that the tree of life “lies in tatters, torn to pieces by an onslaught of negative evidence.... [D]ifferent genes told contradictory evolutionary stories.”<sup>2</sup>

As morphologists with high hopes of molecular systematics [explaining biological diversity in an evolutionary context], we end this survey with our hopes dampened. Congruence between molecular phylogenies is as elusive as it is in morphology and as it is between molecules and morphology....Partly because of morphology’s long history, congruence between morphological phylogenies is the exception rather than the rule. With molecular phylogenies, all generated within the last couple of decades, the situation is little better.<sup>5</sup>

**Study after study is finding even more problems with evolutionary lineages from the molecular data than existed with the morphological data.**



# of Life



Image credit: Colin Parrington (without endorsement)

Indeed, the situation is worse. British evolutionist Michael Benton, when comparing certain fossils with live specimens, commented, “Lungfishes show significantly higher rates of evolution of the 28S rRNA gene sequences than coelacanths, other fishes and tetrapods, and this makes it hard to discriminate their correct position in the tree.”<sup>6</sup> Addressing evolutionary relationships from vertebrates’ supposed distant past, Benton states, “There is, however, a major discrepancy between this result and current molecular phylogenies.”<sup>7</sup>

Evolutionary biologists Andrea Feller and S. Blair Hedges compared the DNA sequences of four mitochondrial genes, and found a sister-group relationship of salamanders and caecilians, with frogs as the outgroup.<sup>8</sup> This contradicts the pairing of frogs and salamanders, based on their similarly amphibian life cycles.<sup>9</sup> Olivier Rieppel has found very little morphological support for the molecular pairing of turtles and archosaurs.<sup>10</sup> The same contradiction popped up when investigating cartilaginous fish: “Molecular analyses of chondrichthyan phylogeny so far do not support the morphological tree.”<sup>11</sup>

Examples of this widespread disharmony continuously emerge. Recently, Tamí Mott and David Vieites examined two mitochondrial genes and three nuclear genes in Brazilian worm lizards. After comparing these, they recommend that “we revise the taxonomy of this group,” tossing out the old morphology-based phylogeny in favor of their new molecular-based ideas.<sup>12</sup> Nor is this issue restricted to the animal kingdom: “Only rarely have phylogenetic studies of morphology and DNA data agreed in plant studies, even in well-studied groups.”<sup>13</sup>

## No Objective Evolutionary Relationships

This almost universal phenomenon—that experts can find no objective basis to link one kind of creature to another—is not yet widely acknowledged in the scientific community. General biology texts still often depict phylogenies with smooth progressions of creatures evolving into “higher” forms, but these largely ignore the rampant disagreement found at every level in the technical literature. Perhaps this is because many scientists are unwilling to face the broad implication of all these

**New Scientist** admitted that the tree of life “lies in tatters, torn to pieces by an onslaught of negative evidence.”

studies: If agreement on what evolved into what cannot even be reached *within* closely “related” creatures, then what confidence is there that objective evolutionary lineages will ever be found *between* totally different creatures? And if there are no such lineages, then there never was any Darwinian evolution. And without evolution, there must be a Creator.

The fact that it has been impossible to objectively establish evolutionary relationships between so many creatures indicates that creatures never evolved from different kinds. Darwin’s tree, and the generations of more and more intricate versions of phylogenetic trees published over the last couple of centuries, are merely man-made illustrations of a long macroevolutionary past that never really happened. Instead, the progenitors of today’s living creatures were created as distinct kinds around 6,000 years ago, even as God has revealed in His Word. ●

## References

1. Johnson, J. J. S. 2008. How Young Is the Earth? Applying Simple Math to Data in Genesis. *Acts & Facts*. 37 (10): 4.
2. Lawton, G. 2009. Why Darwin Was Wrong About the Tree of Life. *New Scientist*. 2692: 34-39.
3. Gura, T. 2000. Bones, molecules...or both? *Nature*. 406 (6793): 230-233.
4. Ciccarelli, F. D. et al. 2006. Toward Automatic Reconstruction of a Highly Resolved Tree of Life. *Science*. 311 (5765): 1283-1287.
5. Patterson, C., D. M. Williams, and C. J. Humphries. 1993. Congruence Between Molecular and Morphological Phylogenies. *Annual Review of Ecology and Systematics*. 24: 153-188.
6. Benton, M. J. 2005. *Vertebrate Paleontology*. Malden, MA: Blackwell Publishing, 69.
7. *Ibid*, 41.
8. Feller, A. E. and S. B. Hedges. 1998. Molecular evidence for the early history of living amphibians. *Molecular Phylogenetics and Evolution*. 9 (3): 509-516.
9. Benton, *Vertebrate Paleontology*, 104.
10. *Ibid*, 114.
11. *Ibid*, 165.
12. Mott, T. and D. R. Vieites. Molecular phylogenetics reveals extreme morphological homoplasy in Brazilian worm lizards challenging current taxonomy. *Molecular Phylogenetics and Evolution*. Article in press, available online February 2, 2009.
13. Frohlich, M. W and M. W. Chase. 2007. After a dozen years of progress the origin of angiosperms is still a great mystery. *Nature*. 450 (7173): 1184-1190.

Mr. Thomas is Science Writer and Mr. Sherwin is Senior Science Lecturer.



# CENSORSHIP IN TEXAS

## *Fighting Academic and Religious Discrimination*

JAMES J. S. JOHNSON, J.D.

“Stop the presses!” That was one of the effects of the decision of the Texas Higher Education Coordinating Board (THECB) in Austin, Texas, on April 24, 2008, when the Institute for Creation Research Graduate School (ICRGS) was told that it could not move its 27-year-old Master of Science program to Texas, nor could it recruit students from Texas to apply to its California graduate school. Why? Because ICRGS does not teach science from an *evolution-only* viewpoint.

Dr. Raymund Paredes, in his official capacity as Texas Commissioner of Higher Education, has assumed and officially favored his personal viewpoint that the Big Bang was an “astonishing event” that “was initiated some 14 billion years ago,”<sup>1</sup> and imposed that personally-

held belief on a private school. No eyewitness or forensic evidence was presented by Dr. Paredes last April to support his assumption; he relied only on his ardent belief in this theory that is professed by some scientists, but not all.

As a result, college-level science education in Texas is now muzzled by Texas governmental censorship, a situation that interferes with both academic freedom, the right of a school to teach any subject from its own institutional viewpoint; and interstate commerce, the right of a school outside Texas to recruit and teach Texas residents.

Many *Acts & Facts* readers will recall a similar controversy in California 19 years ago. ICR sought due process in response to political persecution from a California education official named Bill Honig.

In April 1990, the Institute for Creation Research filed suit in federal court against the California Department of Education, which has denied the ICR Graduate School of Science approval to operate, in effect closing it. This suit, filed in U.S. District Court in San Diego, also names Bill Honig, California Superintendent of Public Instruction, and his aides as defendants, alleging that ICR’s rights to freedom of speech and religion, as well as academic freedom, have been abridged.<sup>2</sup>

That legal controversy resulted in a victory for ICR’s graduate school—and for academic freedom.<sup>3</sup>

Now a similar controversy in Texas hinges on whether a private graduate school is allowed to call its privately-funded Science Education program “science,” while simultaneously de-

claring its viewpoint that Darwin was wrong.

*Déjà vu* all over again? In many ways, it is. This adversarial arena is “conservative” Texas, not “liberal” California, but the controversy itself is the same: whether private institutions are allowed the academic freedom to teach science—or any subject—according to a biblical Christian viewpoint.

Of course, the controversy is not unique to ICR’s graduate school. Scientists and professors who are Christians, and even non-Christian academics, continue to face persecution from science censors. Ben Stein’s *Expelled* documentary in 2008 clearly demonstrated that even highly-qualified scientists in secular institutions are facing various forms of expulsion simply because they question “recognized” Darwinian beliefs and the tenets of evolutionary science.<sup>4</sup>

THECB Commissioner Raymond Paredes insists that the 27-year-old Master of Science program at ICRGS cannot possibly be “science” because its professors hold a biblical Christian viewpoint about the origin of the universe and the origin of life on earth. Call it something other than science, he and his board members suggested, and ICR can move its school to Texas.

I still remember from my boyhood the days of racial segregation in America, and walking past public bathroom doors labeled “Men,” “Women,” and “Colored.” Discrimination was ugly then, and discrimination is just as ugly today.

ICRGS is now the victim of academic (and religious) viewpoint discrimination in the Lone Star State. And because this government-mandated viewpoint ban is now enforced against the content of ICR’s school catalog within the state, this viewpoint discrimination includes censorship-stifling freedom of the press.

However, the U.S. Supreme Court has labeled this kind of viewpoint discrimination as especially detrimental in postsecondary educational contexts:

It is axiomatic that the government may not regulate speech based on its substantive content or the message it conveys....

Other principles follow from this precept. *In the realm of private speech or expression, government regulation may not favor one speaker over another....Discrimination against speech because of its message is presumed to be unconstitutional....* These rules informed our determination that the government offends the First Amendment when it imposes financial burdens on certain speakers based on the content of their expression.... *When the government targets not subject matter, but particular views taken by speakers on a subject, the violation of the First Amendment is all the more blatant....Viewpoint discrimination is thus an egregious form of content discrimination.* The government must abstain from regulating speech when the specific motivating ideology or the opinion or perspective of the speaker is the rationale for the restriction.... Vital First Amendment speech principles are at stake

### College-level science education in Texas is now muzzled by Texas governmental censorship, a situation that interferes with both academic freedom and interstate commerce.

here. *The first danger to liberty lies in granting the State the power to examine publications to determine whether or not they are based on some ultimate idea and, if so, for the State to classify them.* The second, and corollary, danger is to speech from the chilling of individual thought and expression. *That danger is especially real in the University setting, where the State acts against a background and tradition of thought and experiment that is at the center of our intellectual and philosophic tradition.*<sup>5</sup> (emphasis added)

“Unconstitutional,” “violation,” “egregious,” and “danger” are the words the U.S. Supreme Court has used to describe the type of discrimination now imposed upon the ICR Graduate School by the THECB. And that’s why ICR is now seeking due process at both the state and federal levels.

For perspective, consider the legal crisis faced by the Jewish leader Zerubbabel during a time in history documented in the Old Testament book of Ezra (chapters 4-6).

Zerubbabel undertook a project for God in Jerusalem with the approval and support of King Cyrus, ruler of the Persian Empire. The

immediate task (which presupposed Jewish hearts returning to God) involved repatriating Jewish exiles and leading them in rebuilding the Temple.

But opposition to this noble project arose from adversaries (4:1-3) who claimed that the Temple reconstruction must be prevented for the public good, to prevent social instability that would occur if the Jews were allowed the freedom to continue living and worshiping in Jerusalem (4:4-16). And, for a time, the enemies of the Jewish people got what they wanted, and the Temple project was forcibly halted (4:17-23). For an agonizingly long time, the Temple remained unfinished (4:24), until a form of legal due process provided justice for Zerubbabel and the Jews (5:6-17; 6:1-5).

Will ICR achieve the same type of victory against the THECB? The laws of the United States and of Texas are there to allow it, and the courts have ruled against the THECB in the recent past when it overstepped its authority against three other Christian schools.<sup>6</sup> But as it was with Zerubbabel, only God can give the outcome He deems best for ICR and for its school. And ICR will honor Him regardless of what that outcome is (Daniel 3:16-18).

Expect to see more about ICR in the news as we seek justice. Now is a good time to pray for ICRGS, for due process, and especially for the God-ordained leaders involved in applying the law to the facts that are placed before them (Romans 13:1-7). ●

#### References

1. Paredes, R. A. Commissioner’s Recommendation on the Request by the Institute for Creation Research for a Certificate of Authority to Offer a Master of Science Degree in Science Education, April 23, 2008. Accessed on the Texas Higher Education Coordinating Board website April 7, 2009.
2. Morris, H. M. and M. Looy. 1990. ICR President Defends Quality of ICR Graduate School. *Acts & Facts*. 19 (8).
3. *ICR Graduate School v. Honig*, 758 F.Supp. 1350, 1352-1353, 66 Educ. Law Repr. 655 (S.D. Calif. 1991).
4. Stein, B. 2008. *Expelled: No Intelligence Allowed*. DVD. Directed by Nathan Frankowski. Premise Media Corporation, L.P. Available at [icr.org/store](http://icr.org/store).
5. *Rosenberger v. Rectors & Visitors of the Univ. of Va.*, 515 U.S. 819, 828-835, 115 S.Ct. 2510, 2516-2520 (1995).
6. *HEB Ministries, Inc. v. THECB*, 235 S.W.3d 627 (Tex. 2007) (involving Tyndale Theological Seminary, Southern Bible Institute, and Hispanic Bible Institute).

Dr. Johnson is Special Counsel at ICR.



# LETTERS TO THE EDITOR

I just wanted to let you know I received the March issue of *Acts & Facts* and really enjoyed it. I was blessed by all the articles, especially Dr. Guliuzza's article on Solar Energy to Human Energy. I don't think I will be able to eat food the same way again! I look forward to future articles describing the amazing abilities of our God-created bodies. I will be placing the March issue at my church, as I usually do, for someone else to be blessed.

—J.A.

Our prayers go out to you and for the intelligentsia of Texas to allow accreditation and acceptance of creation university teaching. We are people of intelligence and should be able to take creation arguments as far as they go... Is this not evidence of an enlightened society: to question and gather all the facts? What are they afraid of? We fought terrible wars to protect our freedom of choice.

—I.B.O.

Your organization provides me the thought provoking, insightful commentary on Creationism that I need. With this liberal, drive-by media that bombards me with their views of science, I need reinforcement of the true science.

—R.H.

I use your daily devotional to connect with a former employee and friend of mine who is degrading quickly due to ALS... I signed up for the ICR devotionals via the Internet and then I forward them to him each day. He and his wife have indicated that these are a great blessing to them. I wanted you to know that the Lord is using your devotionals to edify those in need.

—D.J.B.

**Editor's Note:** Thank you to all the naval veterans who contacted us regarding our March cover article "Anchors Away? Confronting biblical drift among today's evangelicals." The title was intended as a play on words using "away" instead of "aweigh" to emphasize the drifting of many Christians from their biblical moorings in God's Word.

**Correction:** In the first paragraph of Frank Sherwin's April 2009 article titled "A Shocking Group of Fish and Eels," the ending of the final sentence was inadvertently omitted. It should have read "and it worked too well, probably killing the patient."

Have a comment? Email us at [editor@icr.org](mailto:editor@icr.org). Or write to Editor, P. O. Box 59029, Dallas, Texas 75229.



## This month on "Science, Scripture, & Salvation"

WEEKEND OF MAY 2

### *Pets and Our Health*

Many of us enjoy pets, but did you know that they can improve your health? Scientific studies show that having pets can lower blood pressure and stress. It's no wonder that dogs are known as "man's best friend." Don't miss this fun and informative program!

WEEKEND OF MAY 9

### *Plate Tectonics*

From the Rocky Mountains to the Himalayas, earth's high mountains are beautiful and wondrous to behold. Were these majestic and rugged terrains formed millions of years ago, or did the powerful forces of the worldwide Flood set the earth's plates on a collision course with each other? Listen in as we break down the facts for you!

WEEKEND OF MAY 16

### *Exploiting the Rock Ages*

Jurassic, Devonian, Cambrian. What do these all mean? Even if you're a geology major, you may not know that these terms and the rest of the geologic record have been radically manipulated to fit evolutionary philosophy. How did this happen? Find out this week on *Science, Scripture, & Salvation!*

WEEKEND OF MAY 23

### *What Really Happened at Grand Canyon?*

Many people are confused about how Arizona's Grand Canyon was formed. Some think it was carved by the Colorado River over millions of years, while others believe it eroded during Noah's Flood. So what really happened at Grand Canyon? The answer you'll hear from creation scientists on today's program may surprise you, so tune in!

WEEKEND OF MAY 30

### *What Really Happened to the Dinosaurs?*

The creatures of yesteryear that have intrigued scientists the most are the dinosaurs. Although they may be gone, the debate about how they vanished lives on. While no one really knows for sure how *T. rex* and his friends met their end, creation scientists get a pretty good idea by following clues in the Bible and geology. Join us for this fascinating discussion!

To find out which radio stations in your city air our programs, visit our website at [www.icr.org](http://www.icr.org). On the radio page use the station locator to determine where you can hear our broadcasts in your area. You can also listen to current and past *Science, Scripture & Salvation* programs online, so check us out!

# Home-Going Preparations

HENRY M. MORRIS IV

Death is the great enemy of all mankind. Since that fateful day in the Garden of Eden, when “by one man sin entered into the world, and death by sin” (Romans 5:12), God’s creation has groaned under the curse of decay and death. Yet those who have been redeemed and forgiven by the precious blood of Christ no longer need to fear its “sting” (1 Corinthians 15:55) or drown in its sorrow. For the true Christian, death is merely an entrance into the joyful presence of our great Savior and Redeemer.

This sweet comfort was impressed upon me with the recent home-going of a very dear and long-time friend. While the sorrow of the moment was heavy at times, with great joy we celebrated his life and salvation in Christ, and looked forward to when we would be reunited in heaven. What a blessing we have in Jesus, knowing that death is but a temporary separation for all those who know the Lord!

No doubt many of you have experienced the home-going of friends or loved ones, and afterwards found yourself reflecting on your

own circumstances. For committed Christians this is often a reminder from the Lord to readjust their focus back onto things of eternal value. But without proper planning and preparation, the resources God has granted us in life may not be distributed appropriately after we have gone home to heaven.

The first line of defense in this dilemma is a well-thought-out will, but recent published reports indicate that over 50 percent of Americans who pass away each year do not have valid wills in place.<sup>1</sup> The reasons for this are varied; some believe they do not own enough property to need one, others believe their spouse inherits everything automatically, while others believe that beneficiary designations on life insurance policies and retirement plans are sufficient. But apparently, most simply procrastinate!

Without a valid will, state laws of “descent and distribution” essentially create a state-written will for those who did not make their own.<sup>2</sup> The repercussions can be scary and impersonal, since state laws make no exceptions for your wishes, and oftentimes de-

plete estates unnecessarily with expenses that can be minimized or avoided through a well-planned will. State laws also allow the courts to decide who will administer your estate and who will be the guardian of your surviving minor children. And they will not make bequests of any kind—to friends, to church, or to charities that are dear to your heart.

Scripture teaches a simple but effective model to distribute remaining earthly assets for the good of the Kingdom. In short, we are commanded to:

- Take care of our families (1 Timothy 5:8)
- Provide for our churches (1 Corinthians 16:2)
- Support Christian ministries (1 Timothy 6:17-19)
- Share in general charity (2 Corinthians 9:8-9)

But without a will, your remaining assets may not be disbursed in a truly biblical manner. In obedience to the Lord, please do not allow this to happen.

ICR stands ready to help you in this regard. We would be happy to provide samples of well-written wills, or brochures containing useful information on proper will preparation. The vast majority can be prepared relatively inexpensively, and generally should be handled by a knowledgeable attorney in your local area. If you wish to support ICR in some way, there is nothing easier than including a simple bequest to ensure a portion of your remaining resources are shared with our ministry. We promise to apply it prayerfully and carefully for the eternal work of the Kingdom.

Be prepared for your home-going. ICR can help. Please contact us today at 800.337.0375 or [stewardship@icr.org](mailto:stewardship@icr.org).

#### References

1. *How to Make a Will That Works*, published by The Sharpe Group. A copy of this pamphlet is available from ICR.
2. *Ibid.*

*Mr. Morris is Director of Donor Relations.*



# Conflicts Between Text and Theology

HENRY M. MORRIS III, D.M.I.N.

All scripture is given by inspiration of God, and is profitable for doctrine, for reproof, for correction, for instruction in righteousness: that the man of God may be perfect, thoroughly furnished unto all good works. (2 Timothy 3:16-17)

Scripture is inerrant, not in the sense of being absolutely precise by modern standards, but in the sense of making good its claims and achieving that measure of focused truth at which its authors aimed. (Chicago Statement on Biblical Inerrancy; Section III, Exposition, C, Inerrancy, Infallibility, Interpretation, 1978)

How are we to deal with these two foundational statements on inspiration? The passage from Paul's letter to Timothy is recorded, of course, in what we call the "Holy Bible." The other is from a position paper signed and upheld by many (if not most) evangelical leaders. They are quite different. Which one is to rule our practice?

What can be done to achieve unity or a set of doctrines among Bible-believing Christians? It is doubtful that "theology" can do much. Depending on one's theological background, there is a bias toward the "structure" of Scripture—toward the point that reinforces the opinions that have been embraced during one's training. That is true for dispensational or covenant or reformed or postmodern or whatever framework is applied. Interpretation places a filter on the words of Scripture so that one can "rightly divide" (according to one's theology).

Just what liberties, or what restrictions, or what guidelines do we—*can we*—agree on about the text, about the Scriptures given by the "breath" of God? In my mind, it all comes down to how we treat the written words of Scripture. The present debate (and to some degree, the age-long debate) involves three P's.

## Preservation

Just how much of the present text can we trust to be like the original manuscripts? The basic question here is, of course, if only the original manuscripts are inspired (without error), which words, what manuscript, which translation can be trusted? This is an important question, and continues to create problems among evangelicals.

## Precision

Just how inspired is Scripture? Is every word of God pure? Or is only the "framework" inspired? How must we approach the text? Should

we trust only each thought, or just each sentence, or should each word, each tense,

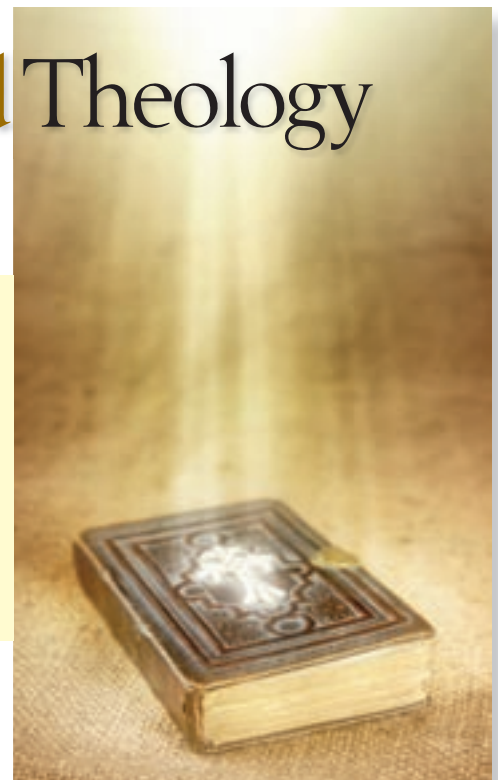
indeed each letter be seen as absolutely accurate? Where does the precision of inspiration start or leave off? This is critical to how we study and evaluate Scripture. It makes a big difference in our conclusions for most passages. If we cannot come to agreement here, we cannot arrive at common conclusions about much in the Scripture—let alone develop a consistent worldview.


## Perspicuity

This is the word least frequently discussed. The term itself is somewhat vague, although it is supposed to mean "the quality of clearness or lucidity." The clarity of the message has absolutely no meaning if God has not preserved His precise words. Without confidence in the first two—without an agreed upon approach—"clarity" becomes merely what anyone may want it to mean. That, of course, is exactly what the postmodern theologian and the leaders of the "emerging church" suggest.

All of us have been impacted by the arguments that we have been exposed to, perhaps more than we realize. It would be good for all of us to reevaluate the way that we approach Scripture, and attempt to come to an agreement—perhaps even to write a set of tenets that would guide our future discussions. If we cannot agree on how to approach the words of God, we surely will not agree about the words of men. ●

*Dr. Morris is Chief Executive Officer of the Institute for Creation Research.*





# Do you know the big three events that changed history forever?



*Explore history that still impacts our world today!*

*“After Eden, the Gospel message became the overarching message of Scripture. After Eden, the Creation became the foundation for the Gospel message. After Eden, the promise contained in the Creation became the hope of the Gospel.”*

— DR. HENRY MORRIS III

They are cornerstones of Christian faith—and real events that changed the course of human history. Find the connection from Creation, the Fall of man, and the Flood, and how they led to Christ and eventually the cross. In a remarkable exploration of faith, Dr. Henry Morris III reveals the powerful link across history between core concepts of Christianity and our world today, such as:

- How the Scriptures negate the concept of theistic evolution
- Why a living faith and a saving faith exemplify a solid belief in special creation
- The challenges and confusion of scriptural interpretation within academia
- Contains a wealth of insight to deepen your spiritual understanding


This contemporary, easy to understand book reveals how and why these three pivotal events form the very foundation of our faith.

**Only \$12.95** (plus shipping and handling)

To order, call 800.628.7640  
or visit [www.icr.org/store](http://www.icr.org/store)

**Demand the Evidence. Get it @ ICR.**

INSTITUTE  
for CREATION  
RESEARCH



**Demand the Evidence.**  
**Get it @ ICR.**  
**www.icr.org**

*Is truth knowable?  
What makes us human?  
Is there design in nature?  
Must scientific inquiry be limited?*

*Evolution...you know the questions,  
you've been taught it in school, you've  
seen the programs on TV. Now join ICR  
to examine...*

## THE EVIDENCE FOR CREATION



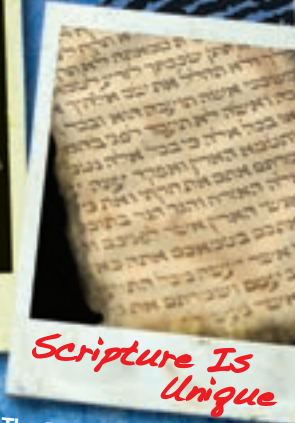
*God Does Exist*

*Reality is best explained  
by the presence of an  
all-powerful, all-knowing,  
loving God.*



*Real Truth Is  
Knowable*

*There is such a thing as  
absolute truth, and we  
can know it.*



*Scripture Is  
Unique*

*The Bible is accurate historically  
and scientifically...and is God's  
truth and our hope for salvation.*



*Nature Reveals the  
Creator*

*God has left His "finger-  
prints" on creation.*



*Science Verifies  
the Creation*

*What does the scientific  
evidence actually reveal?*

**EVIDENCE**

**EVIDENCE**

**EVIDENCE**