

NOAH'S ARK REMAINS IN THE NEWS!

By John D. Morris



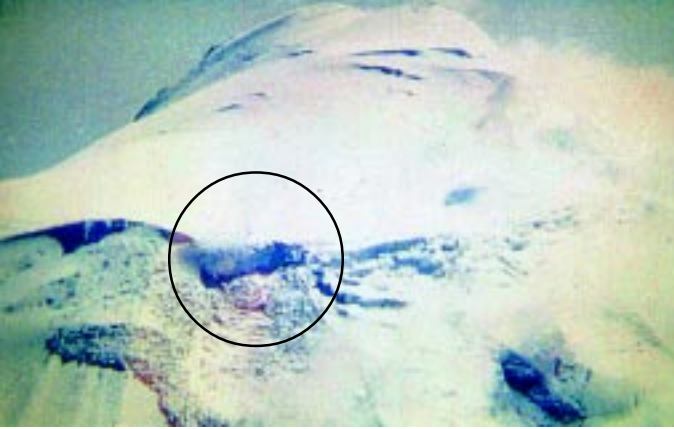
John Morris at site dedication for the Rainbow Paradise.

Noah's Ark and Noah's Flood have always been favorite children's stories, but adults remain fascinated with factual possibilities as well. Every bit of news commands headlines in the media. Sometimes the reports contain bogus information, but intriguing facts continue to captivate.

The depths of the Black Sea recently yielded up evidence for a major flood and a prior civilization which was misinterpreted as from the great Flood of Noah's day. But this flood accompanied the end of the Ice Age following Noah's Flood, as melting glaciers caused sea level to rise, flooding the Mediterranean and then the Black Sea basins, which were inhabited by that time. This probably occurred sometime soon after the Tower of Babel incident. This story, which really was an

attempt to minimize Scripture, was carried by newspapers worldwide.

More favorable coverage, although less definitive, was featured in *Insight*, (www.insightmag.com) vol. 16, no. 43, November 20, 2000. A cover photo and major article entitled "Anomaly or Noah's Ark?" related some of the evidence which supports the contention that remains of Noah's Ark may yet remain on Mt. Ararat in eastern Turkey. It featured efforts to obtain release of government satellite photos, which are reported to show the Ark. Through the efforts of Professor Porcher Taylor, several 1949 photos, which showed the "Ararat Anomaly," were released in 1995. They revealed an elongated object, several hundred feet long, which was dissimilar



The "Ararat Anomaly," Aaron McIntosh, 1987.

to other features in the photos, but photo quality was insufficient to be certain.

Just this past summer, however, Taylor contracted with Space Imaging to acquire satellite photos with resolution of 0.5 meters of the anomaly under optimum conditions. An extremely hot and dry summer exposed vast areas of the mountain usually shrouded in ice, just in time for the camera.

Several tantalizing shots appeared in the magazine, but they and others are still being analyzed by experts. Of those interviewed, some were certain it is a man-made object 534 feet in length and 80–98 feet wide (consistent with the Biblical dimensions of 300 by 50 cubits, given a 20 inch cubit). Others were equally certain it is a natural formation. A solution to this tantalizing puzzle requires more data, either from the ground or air.

Expeditions Planned

Armed with precise coordinates of this object, as well as a few others, at least two expeditions are planned for the summer of 2001. Using a combination of ground-penetrating radar, aerial photography, and on-site investigations, these groups have great potential and could

solve the remaining mysteries given good weather, sufficient time, and cooperation from the authorities.

Meanwhile, frustrated by the lack of finality, a Christian foundation offered a one-million-dollar reward for the Ark's discovery, with the offer expiring on December 31, 2000. Published in Turkish newspapers, it

produced much clamor in Turkey, but no credible claims were presented.

Noah's Ark to Be Built

A group of pastors and businessmen in Hong Kong, however, are not waiting for



Rainbow Paradise

Acts & Facts



PUBLISHED BY

**INSTITUTE FOR CREATION RESEARCH
P.O. Box 2667, EL CAJON, CA 92021**

To disseminate articles and information of current interest dealing with creation, evolution, and related topics. Sent free upon request.

Editor: John D. Morris

Co-Editor: Henry M. Morris

Managing Editor: Donald H. Rohrer

No articles may be reprinted in whole or in part without obtaining permission from **ICR**.



the discovery. They are planning to build the ark as the centerpiece of a Christian educational theme park. Against all odds, they have firm approval from the communist government of China, have acquired a wonderful, visible site, and have all the construction money already in the bank. They plan to begin construction this spring.

For ten days in November and December, I was in Hong Kong for the public announcement of the project, acting as consultant on the museum contents as well as lecturing in numerous universities, teacher seminars, schools, and churches. I was privileged to be present for the site dedication and to represent the group before the media, lending scientific credibility to the project. Many have desired such a project in the past, but this one will happen, and it is an honor to be involved.

The ark will be built to proper scale, although not full length. It will be protruding from a rocky hillside, much as we expect it to be found on Mt. Ararat. The interior of the ark will be a creation museum with a full presentation of the gospel. Pray that this “Rainbow Paradise,” as it will be called, will come to fruition and that it will impact all of Asia.

Of course, the message is the important thing, not the Ark. Remember that the Flood of Noah’s day was God’s instrument of judgment on a sinful, rebellious world, but the Ark was His gracious means of salvation for the believing remnant. As such it is a beautiful picture of our Savior, Jesus Christ, and the salvation through judgment that we can have if we but believe.

This, I feel, is the overriding reason to continue the search for the Ark—to use as an evangelistic tool—an analogy for the salvation we have in Him, our present-day “Ark” of safety.

As you pray for the successful search, revealing photos, and timely construction, pray most of all that the gospel message would be clearly communicated. 🌐

Over the years, many Christians have struggled with evolutionary theory, even going so far as to formulate viewpoints they feel “fit” into the Genesis account of creation. But is it possible to mix evolution and Scripture? Find out by tuning in to our newest “Science, Scripture, & Salvation” series, “Evolution of Compromise.” Join us for topics on Materialistic Evolution, Punctuated Equilibria, Guided Evolution, Theistic Evolution, Progressive Creationism, Gap Creationism, Day-Age Creationism, and Young Earth Creationism.

This month on “Science, Scripture, & Salvation”:

Weekend of: **Title/Topic:**

- Feb. 3** **“Miracle of Aging”**
None of us likes the fact that we are getting older. Yet we all know that we are and will eventually die. Strangely, modern science doesn’t understand why we age. But the Bible has the answer. Tune in!
- Feb. 10** **“Materialistic Evolution”**
The strictest version of evolution is the one that says everything occurred due to natural processes without the benefit of a Creator God. Is this possible? Learn what evolutionists really believe.
- Feb. 17** **“Punctuated Equilibria”**
Trying to account for missing transitional forms in the fossil record, evolutionists have formulated Punctuated Equilibria where evolution was so rapid that it wasn’t possible to leave any transitional fossils showing one basic type changing into another.
- Feb. 24** **“Pantheistic Evolution”**
Is Mother Nature in charge of the universe? What exactly is Pantheistic Evolution? Tune in to find out. 🌐



From Missouri

“Thank you for *The Heavens Declare the Glory of God*. It is so precious to me. I carried it to the beauty shop—my operator asked to read it while I was drying—then asked to borrow it when I was

through. I’d *never* be through with it. I gave her a copy for Christmas.”

From Illinois

“Currently I am reading *The Defender’s Study Bible* line upon line, reference to reference. It has been a wonderful exercise with all the benefits that such an exercise could provide. I have progressed from Genesis to the Book of Romans, chapter 5, this morning, and it has left me wanting more.” 🌱



Origins Issues

by Frank Sherwin

SCIENCE TEACHERS SEE THE CASE FOR CREATION!

The December 1999 issue of *Science Teacher* ran an article entitled “Attitudes Toward Evolution” by two investigators, Weld & McNew, who “were surprised to unearth polar discord among preservice science teachers.” The researchers came to this startling conclusion:

Teachers are nearly split over the existence of scientific evidence for creationism (48 percent agree or strongly agree that there is much scientific evidence for creationism), though most do not perceive creationism and evolution as equally viable scientific alternatives for explaining present life forms (p. 29).

Looking beyond the obvious bias against creation science (seen, for example, in their using the word “creationism” but not “evolutionism”), the authors report that virtually every other American science teacher polled, recognizes evidence for creation. Scripture teaches as much in Romans 1:19–20:

Because that which may be known of God is manifest in them; for God hath shewed it unto them. For the invisible things of Him from the creation of the world are clearly seen, being understood by the things that are made, even His eternal power and Godhead; so that they are without excuse.

The case for creation (and therefore against evolution) has always been clearly seen, as atheist Garret Hardin of UC, Santa Barbara indirectly said in his *Scientific American* book, *Thirty-Nine Steps to Biology*. Consider the revealing titles he gave to two major sections in this fascinating book: section 1, “Fearfully and Wonderfully Made”; and section 2, “Nature’s Challenges to Evolutionary Theory.” This is the point we at ICR constantly make; it’s not only Scripture that challenges the philosophy of neo-Darwinism, but the clear design in nature.

In the second half of the above *Science Teacher* quote, we see how the worldview of the teacher collides with this clear evidence for creation. In other words, the two authors are saying that although there is scientific support for creation, some teachers choose not to see this evidence in a viable, scientific light because it would conflict with evolutionism.

This exciting statistic could not have come at a better time, as many school boards throughout the nation take a second critical look at the strange “molecules-to-man” philosophy in public schools. 🌱

THE GISH-PIGLIUCCI DEBATE



Friday evening, December 1, Dr. Duane Gish debated Dr. Massimo Pigliucci for the fifth time. The debate was at the Church of Christ of Winchester, Virginia, before an audience estimated at 1200. Dr. Pigliucci, a native of Italy, has a Ph.D. in Botany from the University of Connecticut and is an Associate Professor of Botany, Ecology, and Evolutionary Biology at the University of Tennessee-Knoxville. In past debates the format has been 60 minutes for initial arguments. For this debate, however, Dr. Pigliucci insisted on reducing the time, threatening to cancel the debate if that were not done. Dr. Gish reluctantly agreed and pointed out that students and the general public are unceasingly exposed to the arguments and claims of evolutionists, but most have never heard of the challenges to evolutionary theory or the evidence for creation. It is thus advantageous for the evolutionist to reduce the time available to present the evidence by each side.

Pigliucci began by stating that nobody would win, the purpose being only to introduce the subject. A professed atheist, he asserted that one's personal beliefs were irrelevant, that the origin of the universe and of life were not part of evolution, and evolution is simply changes in gene frequencies. He stated that examples of this are seen in viruses, bacteria, plants,

and animals. As far as the fossil record was concerned, he cited what he believed to be examples of intermediate forms in the origin of whales which had evolved from, he said, a hyena-like animal which sought food, such as fish, in the water, and remained long enough there to evolve into whales. Having previously asserted that the origin of life and the universe must be excluded from evolution, he nevertheless talked about the possible evolution of each. He described what he believed to be evidence against a worldwide flood and the insufficiency of the capacity of the Ark to accommodate all the animals that had to be carried. He quoted the statement of faith of ICR scientists and asserted if they truly were seeking truth they could not be bound by a statement of faith. He alleged intermediates between ape and man and challenged members of the audience to see for themselves the evidence for evolution.



In his initial argument Gish first pointed out that the most important principle of science education is to instruct students to identify assumptions, use critical thinking, make logical deductions, and consider alternative explanations. However, in direct contrast to this principle, evolutionists, through their control of the educational system and scientific establishment, insist on indoctrinating students in evolutionary theory and in so doing deny students the opportunity to develop as mature scientists, able to consider all alternatives. Thus students are indoctrinated in what actually

constituted a nontheistic humanistic religion. Dr. Gish pointed out that there is an increasing number of evolutionists who are abandoning the Darwinian explanation, citing the Swedish evolutionist, Dr. Soren Lövtrup, who has declared that the “Darwinian myth is the greatest deceit in the history of science.” Gish described the total absence of evolutionary ancestors and transitional forms for the complex invertebrates, such as clams, snails, trilobites, brachiopods, etc., and the total lack of transitional forms between complex invertebrates and fish, supposedly the first vertebrates. He asserted that this evidence is incompatible with evolutionary theory and demonstrates conclusively that biological evolution has not taken place on the earth. He described the flagella of the *E. coli* bacterium that they use to move rapidly about in response to stimuli. This apparatus employs rotors, stators, and rotary bearings, just as are employed by jet engines. A motor system similar to that utilized by electric motors is utilized to drive the system. He illustrated the multitude of interacting parts of the motor system and of the sensory system employed by the *E. coli* bacterium. He asserted that an individual who fails to

see the absolute necessity of an intelligent Creator for the origin of such an incredibly complex system and believes that it resulted from nothing more than the random processes of evolution would be impossible to persuade, no matter what kind of evidence is available.

In his closing argument Gish described the fact that the notion that our incredibly complex universe and living organisms created themselves beginning

with the chaos and disorder of a hypothetical Big Bang and the simplicity of hydrogen gas is a direct violation of the Second Law of Thermodynamics. The universe could not have created itself naturally, therefore it had to be created supernaturally.

In his rebuttal, Pigliucci asserted that education is not democratic and since the majority of scientists are evolutionists then it is right for evolutionists to see to it that only evolution is taught to students. He accused Gish of using a “quotation game” and of quoting out of context. He attempted to exclude the opinions of Lövtrup and Ruse since, he said, neither is an evolutionary biologist. He insisted that this was not a scientific debate and people will simply be confused by such a debate.

In his rebuttal Gish reemphasized the extreme importance of the total lack of ancestors and transitional forms for the complex invertebrates and fish, reiterating the fact that no ancestors for either had been found. While asserting that the Bible was not the subject of the debate, Gish did respond to Pigliucci’s statement about animals on the Ark by first pointing out that Pigliucci could not describe either the capacity of the Ark or the number

of animals that had to go on the Ark. Dr. Gish reminded the audience that only land-dwelling, air-breathing animals were placed there and they could be accommodated by half of the space available.

The debate concluded with a lively discussion during the question/answer period. Gish made a final point that it was wrong to allow an atheist evolutionist to dictate the worldview taught to students in our pluralistic democratic society. 🌍



Dr. Gish and John Doughty (who arranged the debate).

SUCCESSION ON LAVA

The colonization of new land is said to take place through a progression of series or stages of adaptation. Pioneer plants get a toehold and create a primary soil for subsequent communities to invade. The parade of transient tenants in the developing ecosystem is characteristic of the edaphic (substrate) and physiographic (natural features) condition in that location. The process is called succession and can be seen in New England old-field recovery, Carolina Outer Banks stabilization, and oceanic volcanic island inhabitation as examples.

Odum says, "In a word, the 'strategy' of succession as a short-term process is basically the same as the 'strategy' of long-term evolutionary development of the biosphere, namely, increased control of, or homeostasis with, the physical environment in the sense of achieving maximum protection for its perturbations." Inherent within this idea is the capacity of living organisms to transcend their classification boxes and to "become" whatever it takes to conquer their world. Thus "become" is understood as synonymous with macroevolution. A creation perspective is adaptation of existing ranges of performance by preexisting types to fill niches.

With these thoughts in mind, ICR scientists have begun to investigate the Galapagos Islands, once visited by Darwin and thought to be a showcase for evolution. Volcanic eruptions from the central cone during 1875–1900 caused a massive pahoehoe lava flow into Sullivan Bay on Santiago Island (Constant, 2000). As a result, vegetative succession has begun, much like what had occurred on older islands of the Galapagos archipelago. Mangrove thickets require still water to

establish a colony. Various mangroves can invade coastal shorelines provided tongues of lava dampen the beach surf.

Three species of mangrove (red—*Rhizophora mangle*, L., white—*Laguncularia racemosa*, L., and black—*Avicennia germinans*, L.) are presently establishing beachheads on Santiago, Rabida, and Santa Cruz among others. The shoreward zonation of these species is red—literally knee deep in seawater, white—ankle deep, and black—sole deep. Each has unique adaptations for living in this transition zone such as prop root support, seeding offspring (vivipary), or salt excretion. The invasion strategy is pretty much the same from island to island, and these species are known from other geographic regions of the earth between the Tropics of Cancer and Capricorn (Grzimek, 1976).

So is there any evidence that these three species of mangrove have evolved in the Galapagos? Certainly, they are not new species that never existed before. "As one might expect, many of the plants found here [Galapagos] are adapted for water dispersal and are found on beaches throughout the world. Indeed, this ability to move from place to place by ocean currents explains why most of the plants inhabiting this zone [coastal] are not endemics [occur nowhere else in the world] (McMullen, 1999)." As far as macroevolution is concerned, this part of succession does not demonstrate evolution at the Galapagos. We will examine the endemic question another time.

Pierre Constant, *The Galapagos Islands* (New York, W.W. Norton & Co., 2000), pp. 219–251.

Bernhard Grzimek, ed., *Grzimek's Encyclopedia of Ecology* (New York, Van Nostrand Reinhold, 1976), p. 324.

Conley K. McMullen, *Flowering Plants of the Galapagos* (Ithaca, N.Y., Comstock Publishing Associates, 1999), pp. 28, 80, 81, 86.

Eugene P. Odum, *Fundamentals of Ecology* (Philadelphia, W. B. Saunders Company, 1971), p. 251. 🌱🌿

STEWARDSHIP & TRUST SERVICES

MEMORIAL GIFTS

ICR is becoming increasingly favored with gifts given in memory of a loved one or friend. We are, of course, grateful for these gifts, as we are for all gifts that the Lord directs toward us.

You may ask why one would make a gift of this type. Let me explain. Memorial gifts are frequently made in lieu of flowers or other perishable gifts because of the large number of flower arrangements anticipated at a funeral, the interest held by the deceased in the work of ICR, or the belief by a surviving family member or friend that a gift of lasting value is more appropriate.

Should the Lord bring ICR to your mind at a time when a memorial gift would be appropriate, you can help us minister to the surviving family more effectively by informing us of the following:

- ✓ The name of the deceased.
- ✓ His/her relationship to you.
- ✓ The name and address of the surviving family whom you wish notified of your gift (the amount given will not be mentioned unless you request otherwise).
- ✓ The relationship of the deceased to the family member(s) you wish us to notify.
- ✓ Your name and address.

It will be our pleasure to send the family a letter of encouragement and testimony that focuses their attention on God's abiding love and promised comfort and strength. We will, of course, send you a copy of that letter, along with our thanks and a tax-deductible receipt for your gift.

As you have questions on this or other gifting/stewardship matters, please know that I am here to serve you. I invite your call or letter or e-mail.

Tom Manning, ICR Stewardship and Trust Services, P.O. Box 2667,
El Cajon, CA 92021. Phone: ICR, 619-596-6007; E-mail tmanning@icr.org